

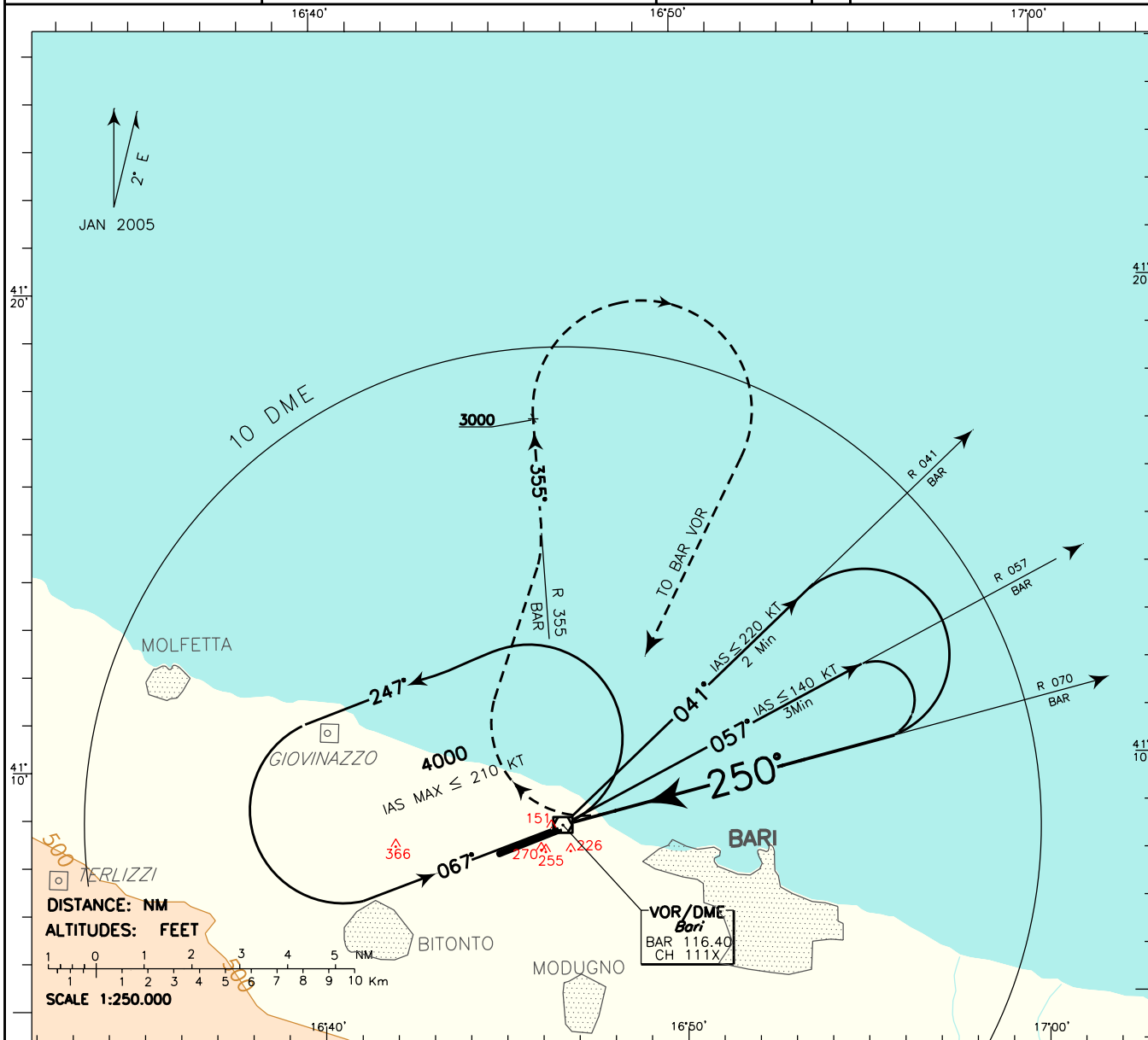
ICAO - INSTRUMENT APPROACH CHART

AD 2 LIBD 5-19

DOC 8168 ED 5 - 2006

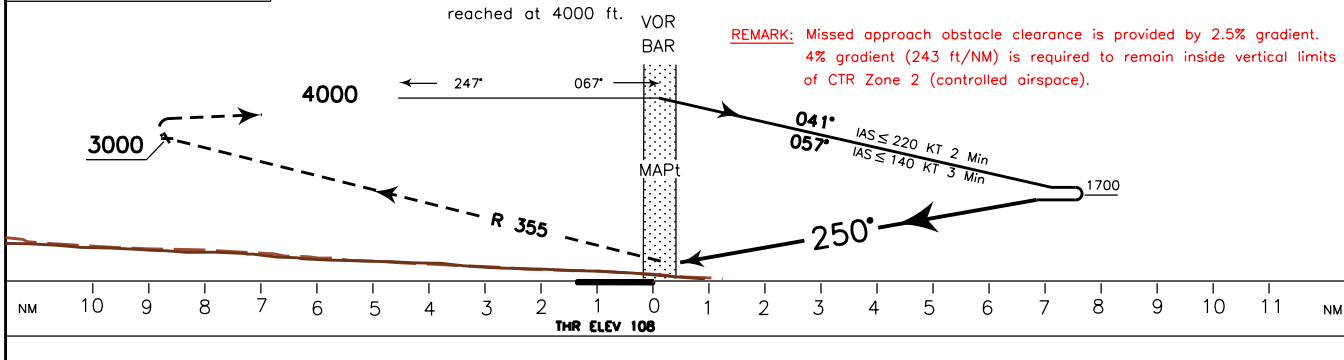
CHANGE: NEW MISSED APPROACH REMARK and TRANSITION ALTITUDE UPDATED

APP Bari Approach	119.500	AD ELEV	LIBD	BARI/ PALESE	
TWR Bari Tower	118.300	187		VOR-X	RWY 25



TRANSITION ALT 5000 MISSED APPROACH: Over BAR VOR/DME turn right (IAS MAX 200 kt) to join and follow RDL 355 BAR VOR climbing to 4000 ft. Crossing 3000 ft turn right and proceed inbound to BAR VOR to be reached at 4000 ft.

REMARK: Missed approach obstacle clearance is provided by 2.5% gradient. 4% gradient (243 ft/NM) is required to remain inside vertical limits of CTR Zone 2 (controlled airspace).



OCA (OCH)		A	B	C	D	CIRCLING SECTOR	GS	FT MIN					MNM SECT ALT	
STRAIGHT IN APPROACH	VOR	600 (492)						80	293					
						100		336						
								120	440					
								140	531					
CIRCLING NORTH OF RWY ONLY		850 (663)		1000 (813)			160	586						