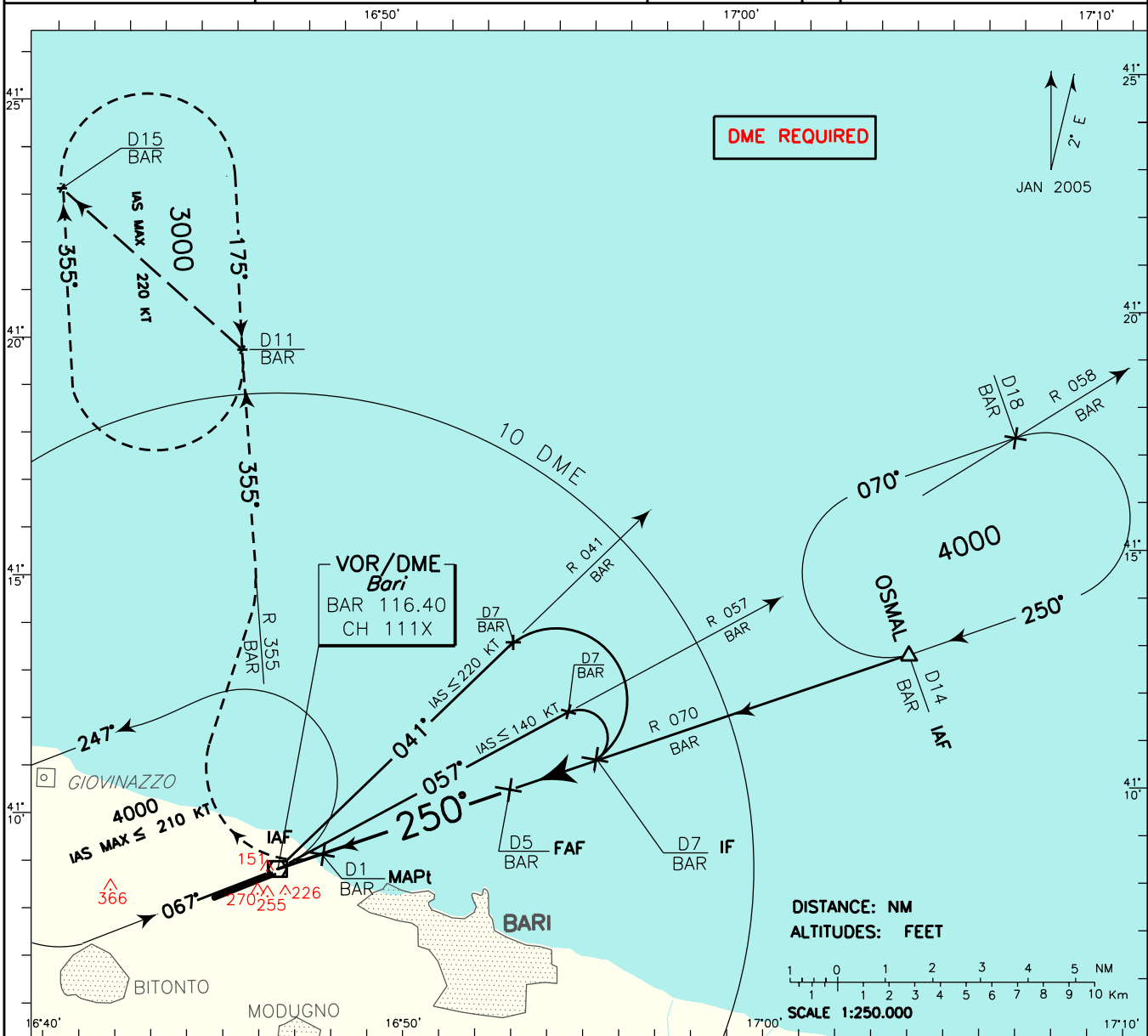


ICAO – INSTRUMENT APPROACH CHART

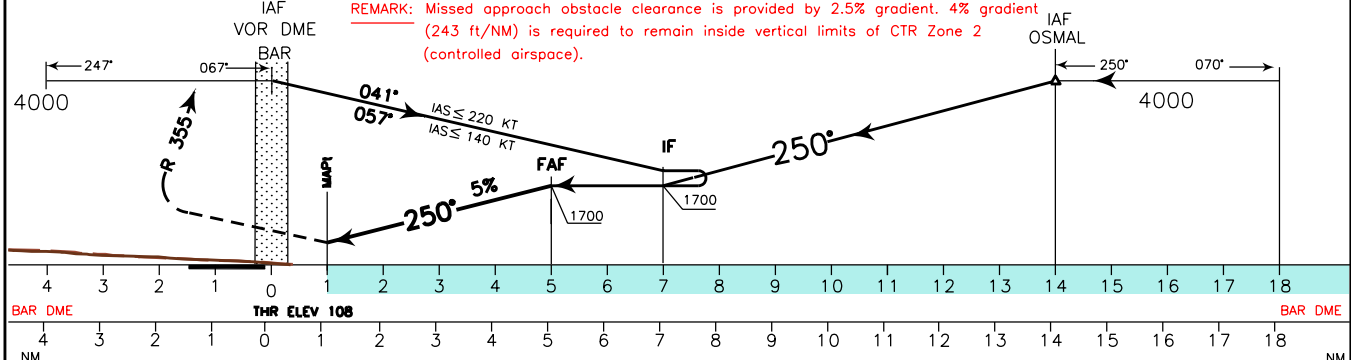
AD 2 LIBD 5-17

DOC 8168 ED 5 - 2006 CHANGE: NEW MISSED APPROACH REMARK and TRANSITION ALTITUDE UPDATED

APP	<i>Bari Approach</i>	119.500	AD ELEV	LIBD	BARI/ PALESE
TWR	<i>Bari Tower</i>	118.300	187		VOR-Z RWY 25



TRANSITION ALT 5000 MISSED APPROACH: Not later than 1 NM BAR DME turn right (IAS MAX 200 kt) to join and follow RDL 355 BAR VOR climbing to 3000 ft. Hold between 11 NM and 15 NM BAR DME. Right turns (IAS MAX 220 Kt).



STRAIGHT IN APPROACH	OCA (OCH)	A	B	C	D	CIRCLING SECTOR	FT MIN	GS	FAF-MAP 4 NM	MAP-THR 1.14 NM	DME	ALT (HGT)	MNM SECT ALT
							BAR	VOR					
STRAIGHT IN APPROACH	VOR	520(412)				NOT ALLOWED	405	80	3 : 00	0 : 51	5	1700(1592)	
							506	100	2 : 24	0 : 41	4	1400(1292)	
							608	120	2 : 00	0 : 34	3	1100(992)	
							709	140	1 : 43	0 : 29	2	800(692)	
							810	160	1 : 30	0 : 26	1	500(392)	
CIRCLING	NORTH OF RWY ONLY	850(663)		1000(813)									