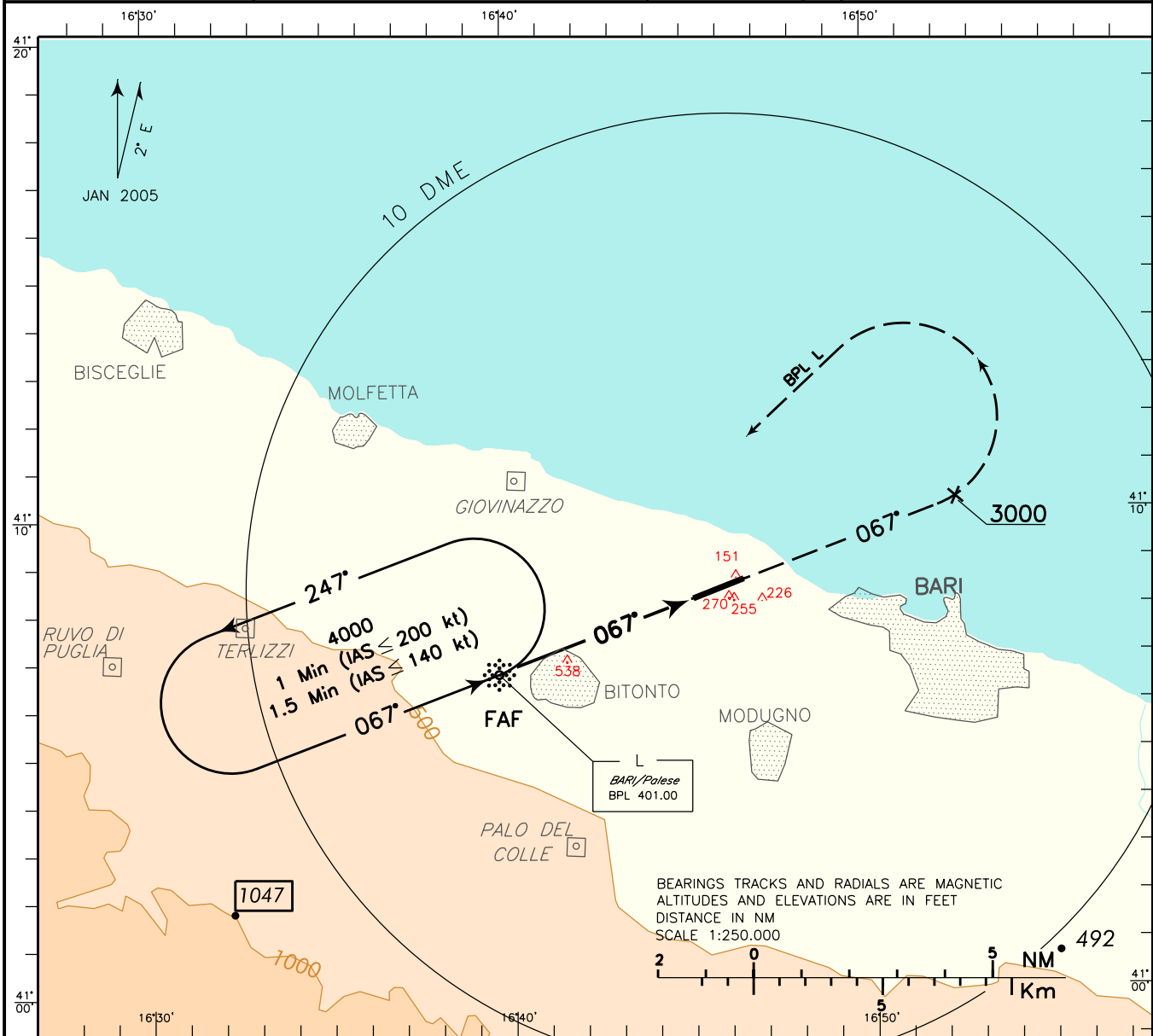
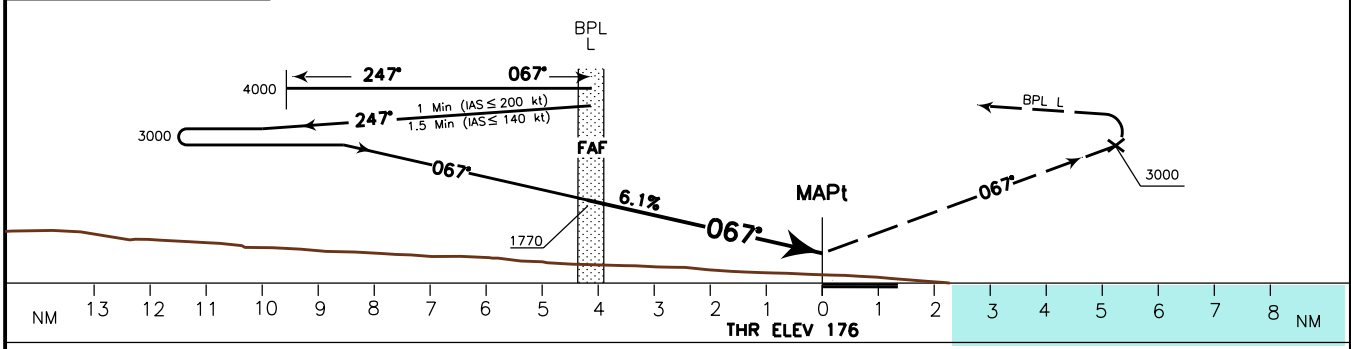


APP <i>Bari Approach</i>	119.500	AD ELEV	LIBD	BARI/ PALESE	
TWR <i>Bari Tower</i>	118.300	187		L - Y	RWY 07

DOC 8168 ED 5 - 2006
CHANGE: TRANSITION ALTITUDE UPDATED



TRANSITION ALT 5000 MISSED APPROACH: Continue on TR 067° (QDR 067° BPL L) and climb to 4000 ft. Crossing 3000 ft turn left inbound to BPL L to be reached at 4000 ft.



OCA (OCH)		A	B	C	D	CIRCLING SECTOR	FT PER MIN	GS	FAF-MAPt	MNM SECT ALT		
STRAIGHT IN APPROACH	L	790(614)						492	80	3 : 08	BPL	L
		850(663)		1000(813)		615		100	2 : 30			
CIRCLING	NORTH OF RWY ONLY					738		120	2 : 05			
						861		140	1 : 47			
						984		160	1 : 34			