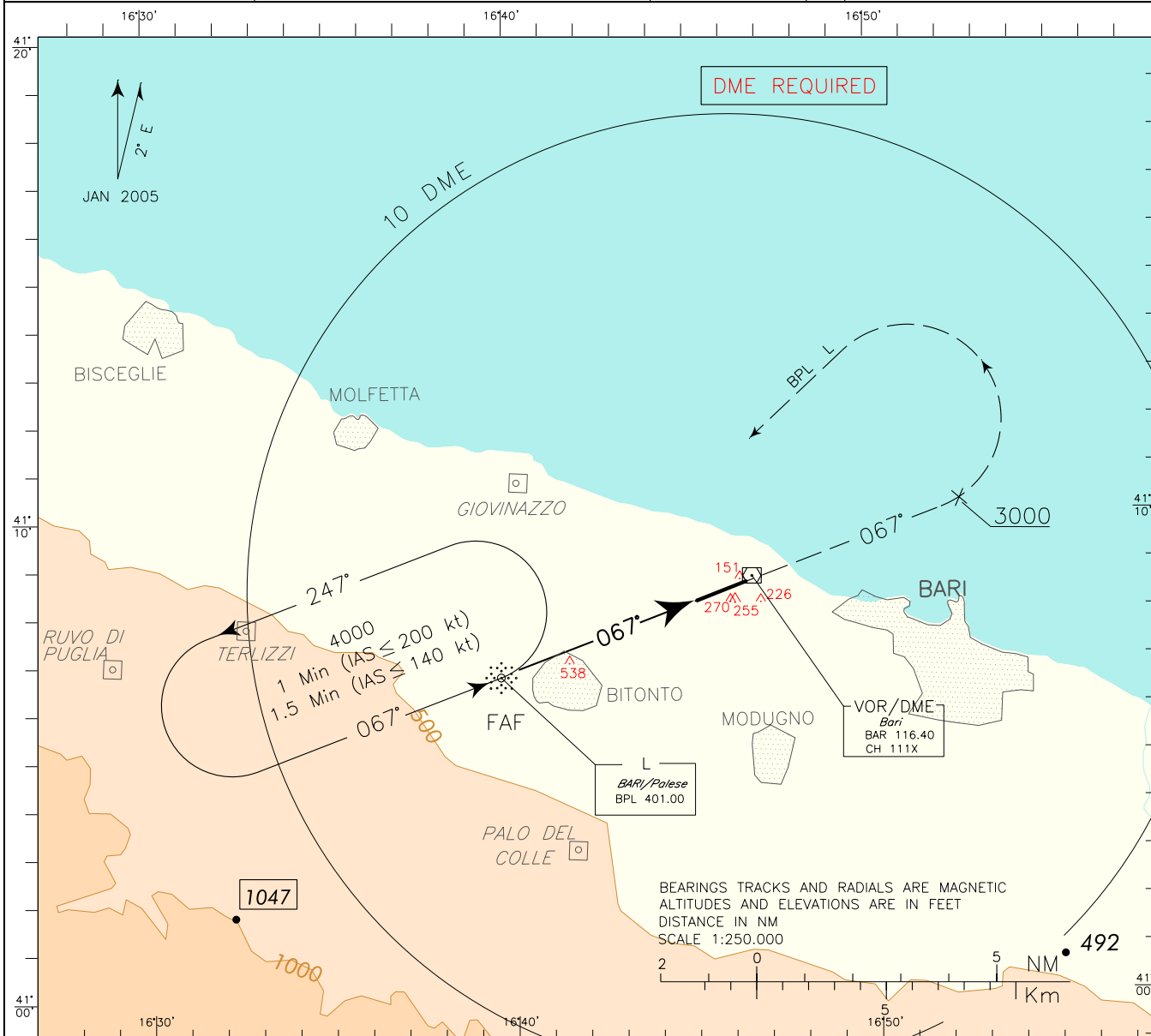


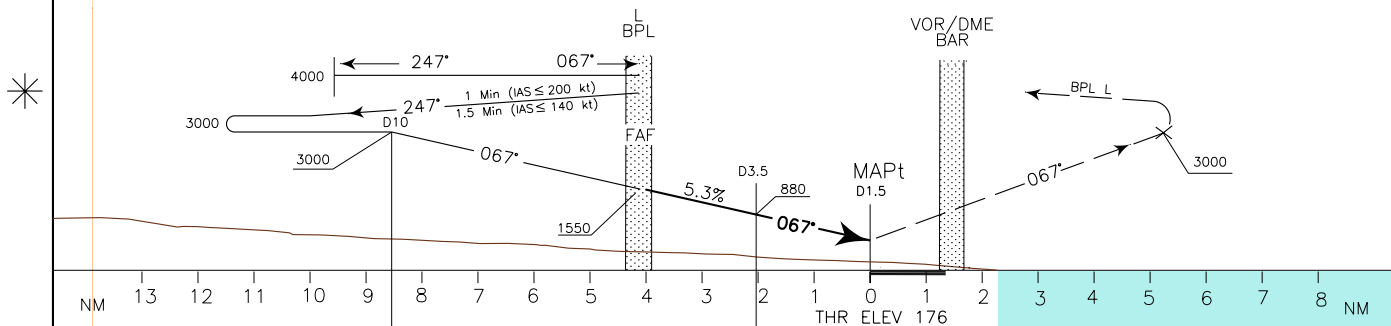
APP <i>Bari Approach</i>	119.500	AD ELEV	187	LIBD	BARI/ PALESE
TWR <i>Bari Tower</i>	118.300				L - Z

DOC 8168 ED 5 - 2006

CHANGE: TRANSITION ALTITUDE UPDATED



TRANSITION ALT 5000 MISSED APPROACH: Continue on TR 067° (QDR 067° BPL L) and climb to 4000 ft. Crossing 3000 ft turn left inbound to BPL L to be reached at 4000 ft.



BAR DME		13	12	11	10	9	8	7	6	5	4	3	2	1	0	1	2	3	4	5	6	BAR DME
OCA (OCH)		A	B	C	D	CIRCLING SECTOR 	FT PER NM	GS	LO-THR	DME	ALT(HGT)	MNM SECT ALT										
STRAIGHT IN APPROACH	L	600(424)					429	80	3 : 08	6	1690(1514)	BPL	L									
							537	100	2 : 30	5	1365(1189)											
CIRCLING	NORTH OF RWY ONLY	850(663)		1000(813)			644	120	2 : 05	4	1045(869)											
						751	140	1 : 47	3	720(544)												
						859	160	1 : 34	2	400(224)												