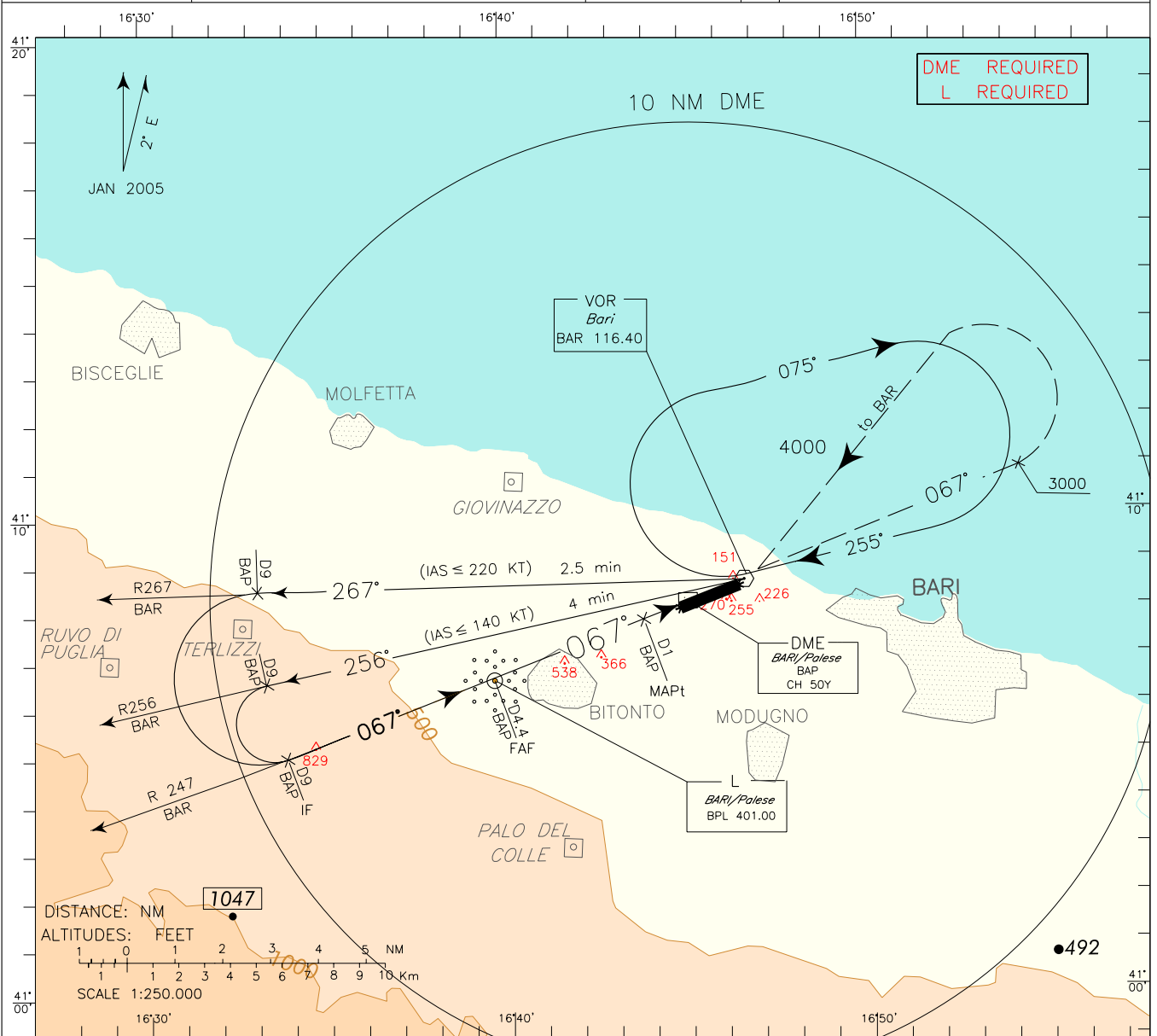


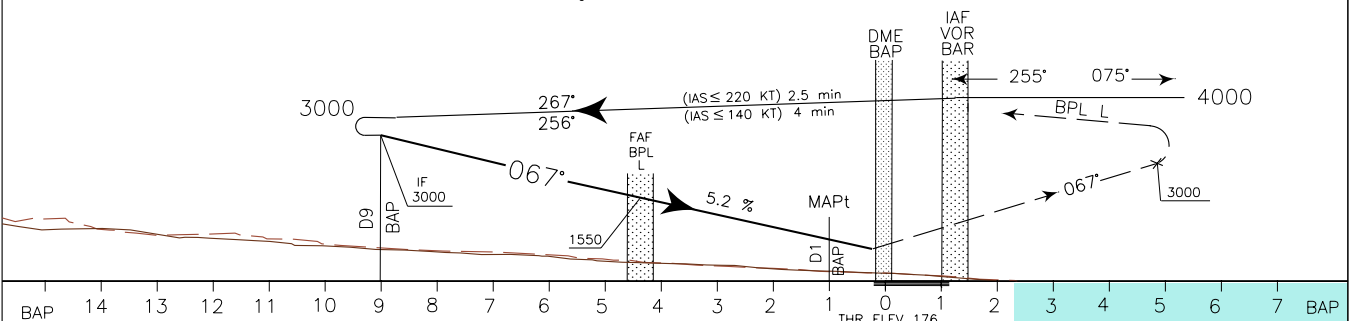
APP <i>Bari Approach</i>	119.500	AD ELEV	LIBD	BARI/ PAESE	
TWR <i>Bari Tower</i>	118.300	187		VOR-X	RWY 07

CHANGE: RADIO AID REQUIRED



TRANSITION ALT 5000

MISSED APPROACH: Continue on TR 067° (RDL 067 BAR VOR) and climb to 4000 ft. Crossing 3000 ft turn left to BAR VOR to be reached at 4000 ft.



OCA (OCH)		A	B	C	D	CIRCLING SECTOR	FT PER MIN	GS	FAF-MAPt	MAPt-THR	BAP DME	ALT (HGT)	MNM SECT ALT	
STRAIGHT IN APPROACH	VORDME	800 (624)					NOT ALLOWED	3.38NM		0.8NM			VOR	BAR
								425	80	2 : 32	0 : 36	4	1435 (1259)	
							531	100	2 : 02	0 : 29	3	1120 (944)		
							637	120	1 : 41	0 : 24	2	800 (624)		
							743	140	1 : 27	0 : 21				
CIRCLING	NORTH OF RWY ONLY	850 (663)		1000 (813)			849	160	1 : 16	0 : 18				