

ICAO - INSTRUMENT APPROACH CHART

AD 2 LIBD 5-5

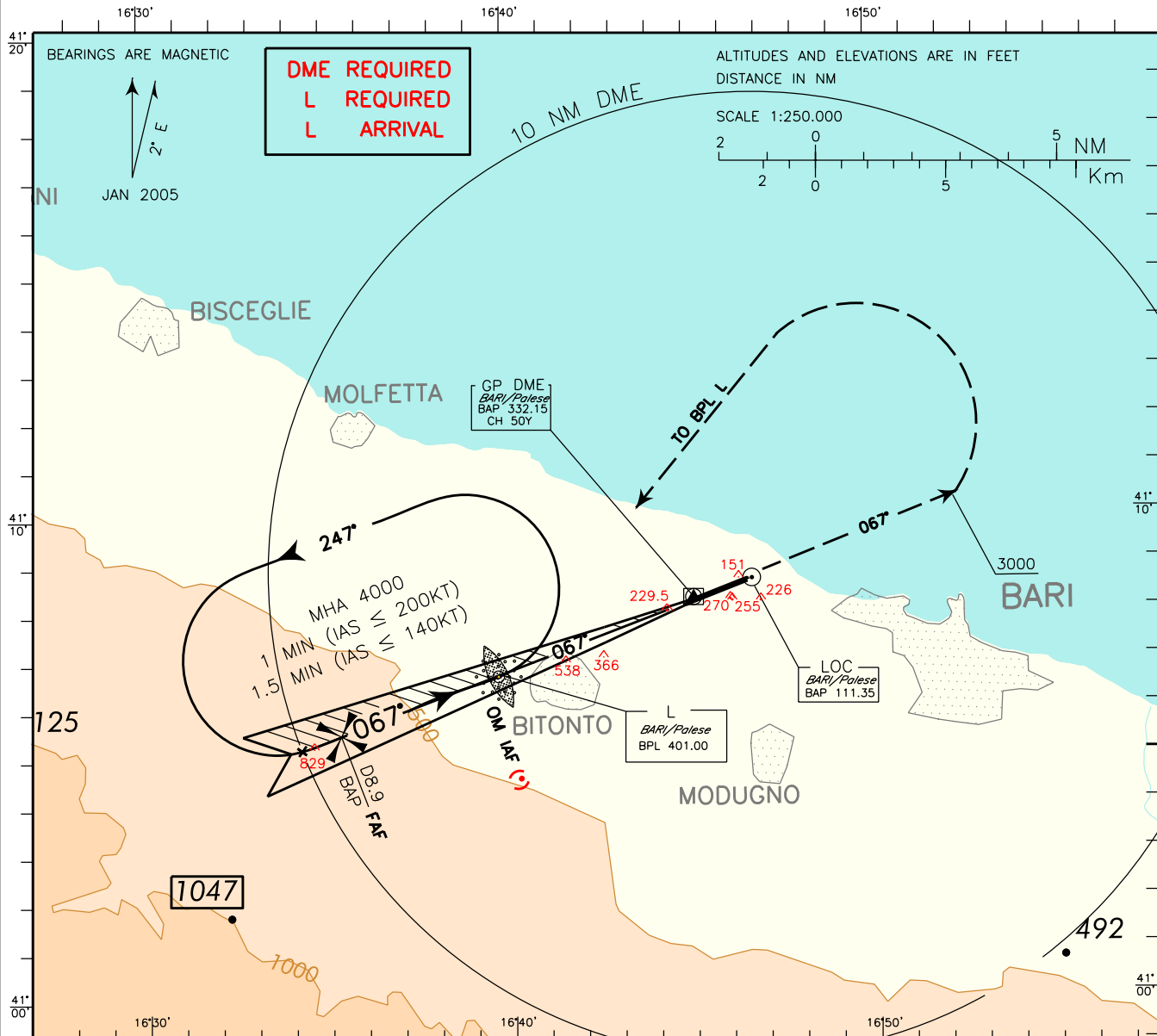
DOC 8168 ED 5 - 2006 AMDT 4
CHANGE: OCA(OCH) FOR ILS CAT I FOR STRAIGHT IN APPROACH UPDATED

(*) REMARK: In case of OM failure, OM replaced by 4.3 NM BAP DME.

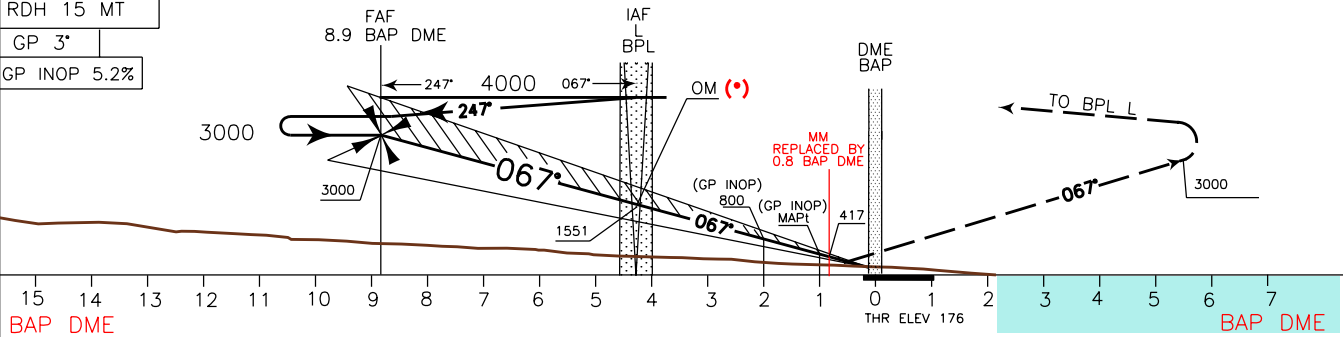
APP Bari Approach **119.500**
TWR Bari Tower **118.300**

AD ELEV
187

LIBD BARI/ PALESE
ILS-X RWY 07



TRANSITION ALT 5000
MISSED APPROACH: Continue on TR 067° (QDR 067° BPL L) and climb to 4000 ft. Crossing 3000 ft turn left inbound to BPL L to be reached at 4000 ft.



OCA (OCH)		A	B	C	D	CIRCLING SECTOR	FT PER MIN	GS	OM-0.8NM	0.8NM-THR	BD AMPE	ALT (HGT)	MNM SECT ALT
STRAIGHT IN APPROACH	ILS CAT I	390(214)	402(226)	410(234)	420(244)			425	80	2 : 40	0 : 27	5	1756(1580)
	GP INOP	600 (424)				531		100	2 : 08	0 : 22	4	1437(1261)	
						637		120	1 : 47	0 : 18	3	1119(943)	
						743		140	1 : 32	0 : 15	2	800(624)	
						849		160	1 : 11	0 : 14	1	481(305)	
	CIRLING NORTH OF RWY ONLY	850(663)		1000(813)									