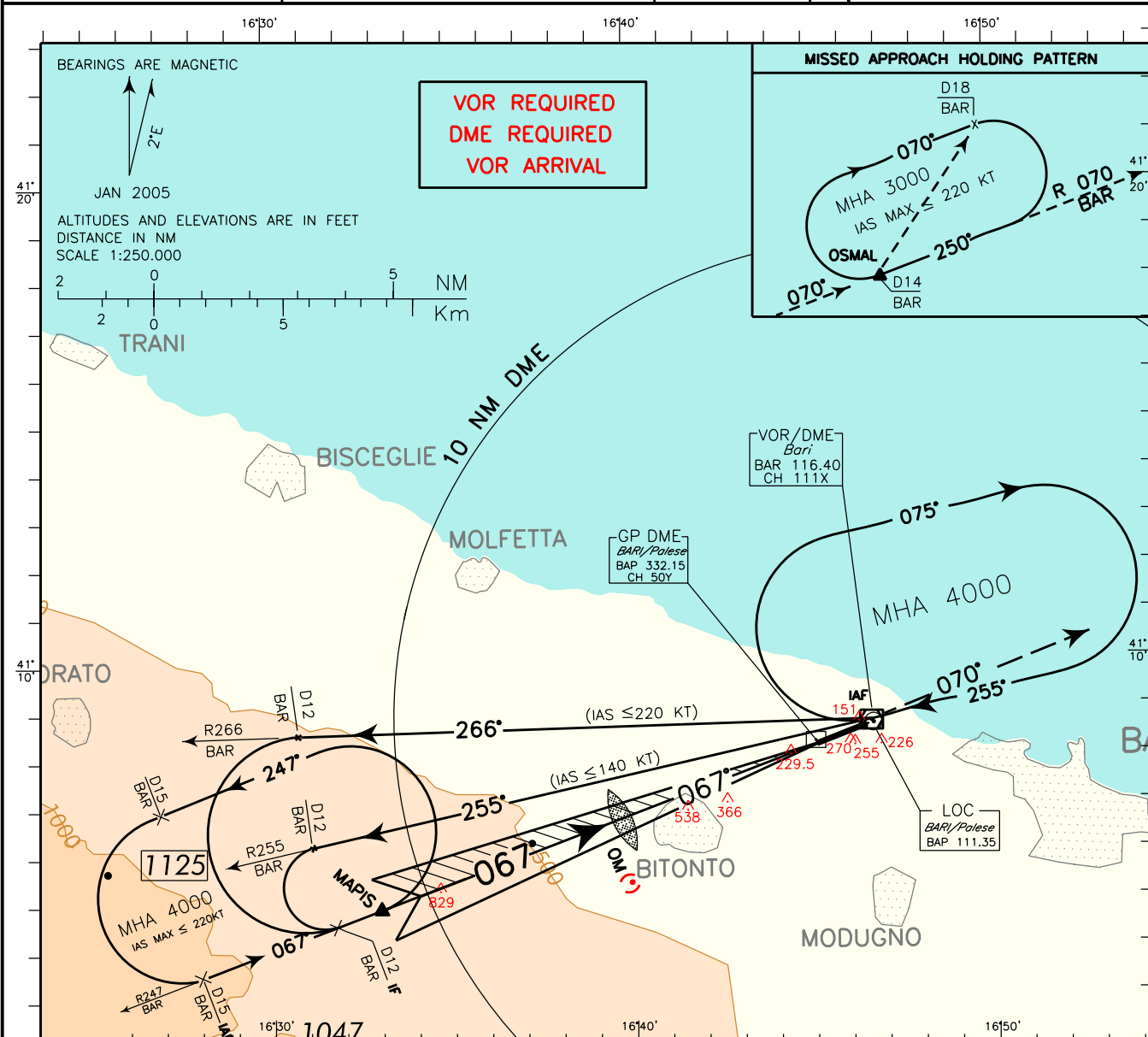


ICAO - INSTRUMENT APPROACH CHART

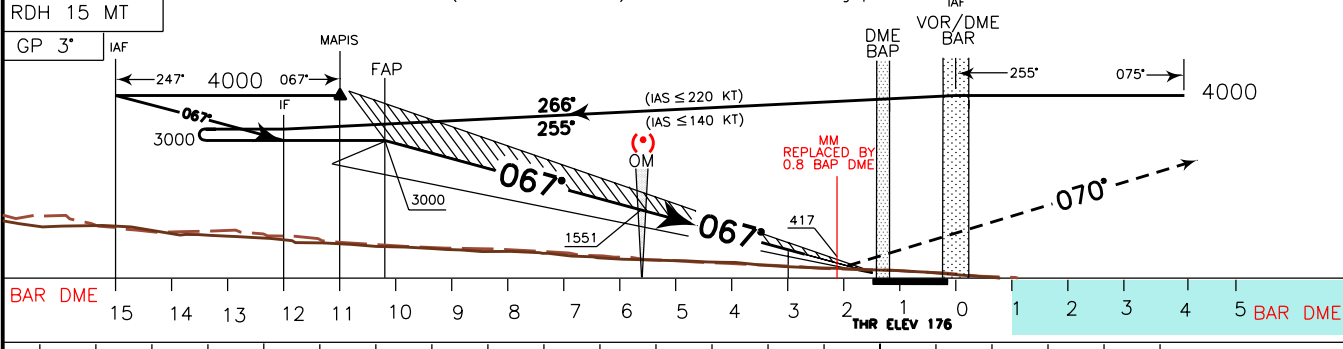
AD 2 LIBD 5-3

CHANGE: OCA(OCH) FOR ILS CAT I FOR STRAIGHT IN APPROACH UPDATED

<p>(*) <b>REMARK:</b> In case of OM failure, OM replaced by 4.3 NM BAP DME.</p>	APP <i>Bari Approach</i>	119.500	AD ELEV	LIBD	BARI/ PALESE
	TWR <i>Bari Tower</i>	118.300	187		ILS-Z RWY 07



TRANSITION ALT 5000 MISSED APPROACH: Continue on TR 067° (RDL 247 BAR VOR) climbing to 3000 ft. Over BAR VOR proceed on TR 070° (RDL 070 BAR VOR) bound to OSMAL holding pattern.



OCA (OCH)		A	B	C	D	CIRCLING SECTOR 	FT PER MIN	GS	OM-0.8NM	0.8NM-THR	B D A M P E	ALT (HGT)	MNM SECT ALT BAR VOR 
STRAIGHT IN APPROACH	ILS CAT I	390(214)	402(226)	410(234)	420(244)		425	80	2 : 40	0 : 27	5	1756(1580)	
	GP INOP	VEDERE/SEE LOC RWY 07					531	100	2 : 08	0 : 22	4	1437(1261)	
		850(663)		1000(813)			637	120	1 : 47	0 : 18	3	1119(943)	
	CIRCLING NORTH OF RWY ONLY	850(663)		1000(813)			743	140	1 : 32	0 : 15	2	800(624)	
		850(663)		1000(813)			849	160	1 : 11	0 : 14	1	481(305)	