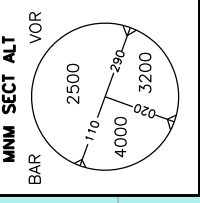
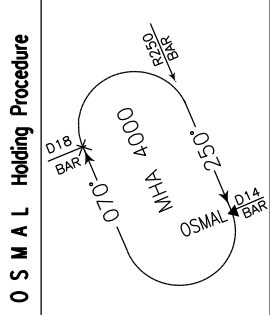
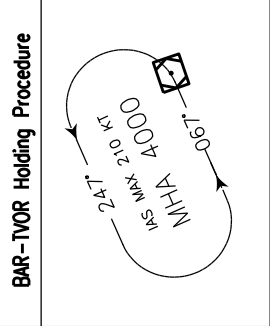
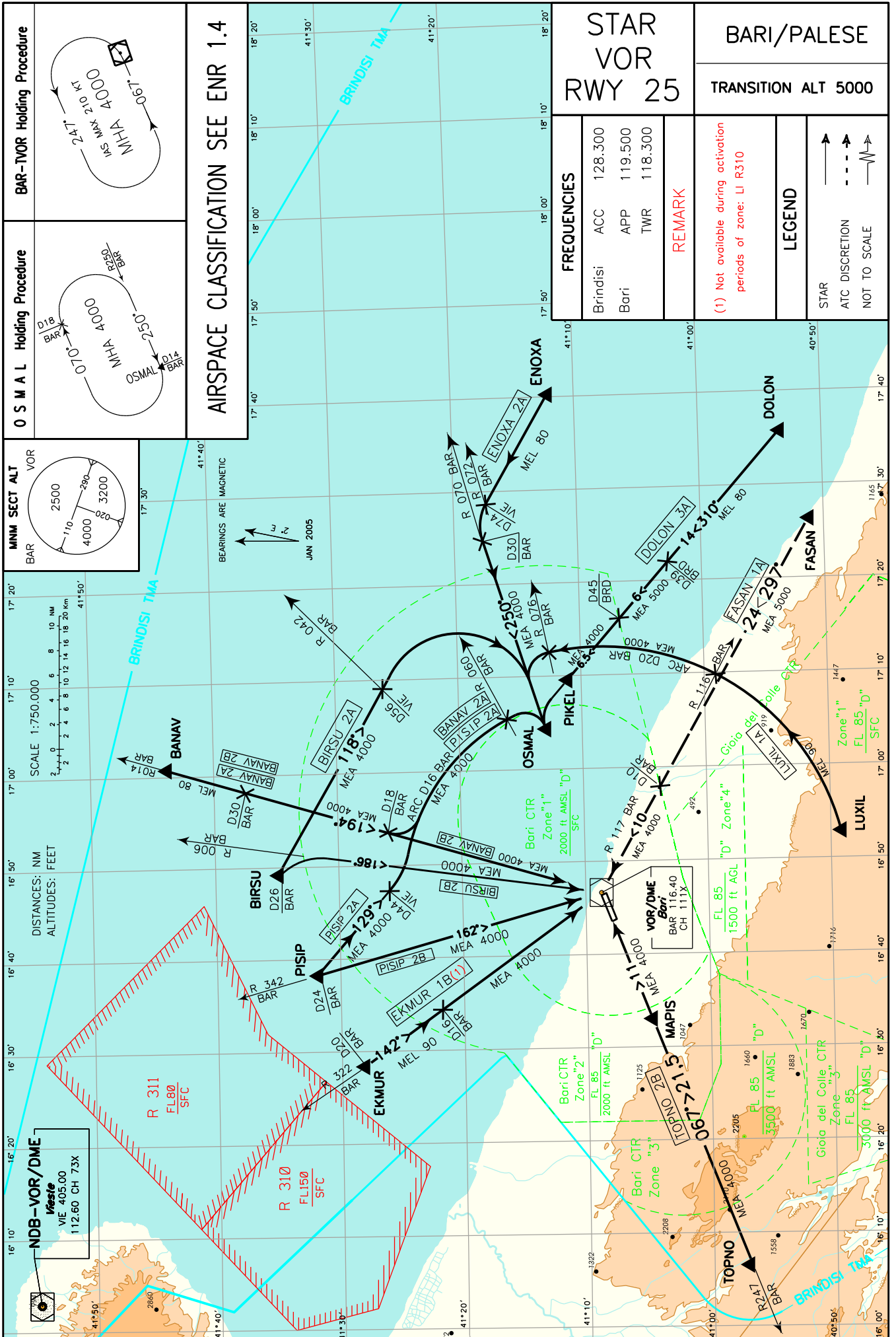


CHANGE: STAR FASAN 1A and EKMUR 1B IMPLEMENTED - STAR VIE 2B and BRD 2L WITHDRAWN



**AIRSPACE CLASSIFICATION SEE ENR 1.4**

<b>STAR VOR RWY 25</b>		<b>BARI/PALESE</b>	
		<b>TRANSITION ALT 5000</b>	
FREQUENCIES			
Brindisi	ACC	128.300	
Bari	APP	119.500	
	TWR	118.300	
<b>REMARK</b>			
(1) Not available during activation periods of zone: LI R310			
LEGEND			
STAR	→		
ATC DISCRETION	- - -		
NOT TO SCALE	~		

**EKMUR 1B (\*)**

EKMUR – TR 142°RDL 322 BAR VOR per BAR VOR.

MEL/MEA: EKMUR – INT RDL 322 BAR VOR/16 NM BAR DME: FL 90; INT RDL 322 BAR VOR/16 NM BAR DME – BAR VOR: 4000 FT.

**EKMUR 1B (\*)**

EKMUR – TR 142°RDL 322 BAR VOR bound to BAR VOR.

**(\*) (Non disponibile durante gli orari di attivazione della zona/Not available during activation periods of zone: LI R310)****BIRSU 2A**

BIRSU – RDL/QDR 118 VIE VOR/NDB fino 56NM VIE DME (o INT RDL/QDR 118 VIE VOR/NDB/RDL 042 BAR VOR), quindi virare a destra fino ad intercettare e seguire RDL 070 BAR VOR (TR 250°) per il punto OSMAL.

MEA: BIRSU – OSMAL: 4000 FT.

**BIRSU 2A**

BIRSU – RDL/QDR 118 VIE VOR/NDB until 56NM VIE DME (or INT RDL/QDR 118 VIE VOR/NDB/RDL 042 BAR VOR), then turn right until joining RDL 070 BAR VOR (TR 250°) bound to OSMAL.

**BIRSU 2B**

BIRSU – TR 186° (RDL 006 BAR VOR) fino a BAR VOR.

MEA: BIRSU – BAR VOR: 4000 FT.

**BIRSU 2B**

BIRSU – TR 186° (RDL 006 BAR VOR) bound to BAR VOR.

**PISIP 2A**

PISIP – TR 129° (RDL 129 VIE VOR) fino a 44 NM VIE DME, quindi virare a sinistra per intercettare e seguire ARC 16 NM BAR DME. Attraversando RDL 060 BAR VOR virare a destra per il punto OSMAL.

MEA: PISIP – OSMAL: 4000 FT.

**PISIP 2A**

PISIP – TR 129° (RDL 129 VIE VOR) until 44 NM VIE DME, then turn left to join ARC 16 NM BAR DME. Crossing RDL 060 BAR VOR turn right bound to OSMAL.

**PISIP 2B**

PISIP – TR 162° (RDL 342 BAR VOR) per BAR VOR.

MEA: PISIP – BAR VOR: 4000 FT.

**PISIP 2B**

PISIP – TR 162° (RDL 342 BAR VOR) bound to BAR VOR.

**BANAV 2A**

BANAV – TR 194° (RDL 014 BAR VOR) fino a 18 NM BAR DME, quindi virare a sinistra per intercettare e seguire ARC 16 NM BAR DME. Attraversando RDL 060 BAR VOR virare a destra per il punto OSMAL.

MEL/MEA: BANAV – RDL 014/30NM BAR VOR/DME: FL 80; RDL 014/30NM BAR VOR/DME – OSMAL: 4000 FT.

**BANAV 2A**

BANAV – TR 194° (RDL 014 BAR VOR) until 18 NM BAR DME, then turn left until joining ARC 16 NM BAR DME. Crossing RDL 060 BAR VOR turn right bound to OSMAL.

**BANAV 2B**

BANAV – TR 194° (RDL 014 BAR VOR) per BAR VOR.

MEL/MEA: BANAV – RDL 014/30NM BAR VOR/DME: FL 80; RDL 014/30NM BAR VOR/DME – BAR VOR: 4000 FT

**BANAV 2B**

BANAV – TR 194° (RDL 014 BAR VOR) bound to BAR VOR.

**FASAN 1A (A discrezione ATC)**

FASAN – RDL/QDR 297 BRD VORTAC/NDB ( RDL 117 BAR VOR) per BAR VOR.

MEL/MEA: FASAN – RDL117/10 NM BAR VOR/DME: 5000 FT; RDL117/10 NM BAR VOR/DME – BAR VOR:4000 FT

**FASAN 1A (ATC discretion)**

FASAN – RDL/QDR 297 BRD VORTAC/NDB ( RDL 117 BAR VOR) bound to BAR VOR.

**LUXIL 1A**

LUXIL, quindi intercettare e seguire ARC 20 NM BAR DME. Attraversando RDL 076 BAR VOR virare a sinistra per intercettare e seguire RDL 070 BAR VOR (TR 250°) per il punto OSMAL.

MEL/MEA: LUXIL – INT ARC 20 NM BAR DME/RDL 116 BAR VOR: FL 90; INT ARC 20 NM BAR DME/RDL 116 BAR VOR – OSMAL: 4000 FT.

**LUXIL 1A**

LUXIL, then join ARC 20 NM BAR DME. Crossing RDL 076 BAR VOR turn left to intercept and follow RDL 070 BAR VOR (TR 250°) bound to OSMAL.

**TOPNO 2B**

TOPNO – RDL 247 BAR VOR (TR 067°) per BAR VOR.

MEA: TOPNO – BAR VOR: 4000 FT.

**TOPNO 2B**

TOPNO – RDL 247 BAR VOR (TR 067°) bound to BAR VOR.

**ENOXA 2A**

ENOXA – TR 298° (RDL 118 VIE VOR) attraversando RDL 072 BAR VOR (74NM VIE DME) virare a sinistra per intercettare e seguire RDL 070 BAR VOR (TR 250°) per il punto OSMAL.

MEL/MEA: ENOXA – INT RDL 118 VIE VOR/RDL 072 BAR VOR : FL 80; INT RDL 118 VIE VOR/RDL 072 BAR VOR – OSMAL: 4000 FT.

**ENOXA 2A**

ENOXA – TR 298° (RDL 118 VIE VOR) crossing RDL 072 BAR VOR (74 VIE DME) turn left until joining RDL 070 BAR VOR (TR 250°) bound to OSMAL.

**DOLON 3A**

DOLON – RDL/QDR 310 BRD VOR/NDB – PIKEL, quindi virare a sinistra per il punto OSMAL.

MEA: DOLON – RDL/QDR 310/39NM BRD VORTAC/NDB: FL80; RDL/QDR 310/39NM BRD VORTAC/NDB – RDL/QDR 310/45NM BRD VORTAC/NDB: 5000 FT; RDL/QDR 310/45NM BRD VORTAC/NDB – OSMAL: 4000 FT.

**DOLON 3A**

DOLON – RDL/QDR 310 BRD VOR/NDB – PIKEL, then turn left bound to OSMAL.

Intenzionalmente bianca

*Intentionally left blank*