

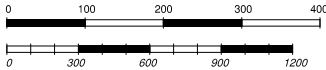
AD ELEV 187	BARI / PALESE	
APRON ELEV 156	L I B D	41°08'17" N 016°45'54" E

VAR 2° E -2005.0

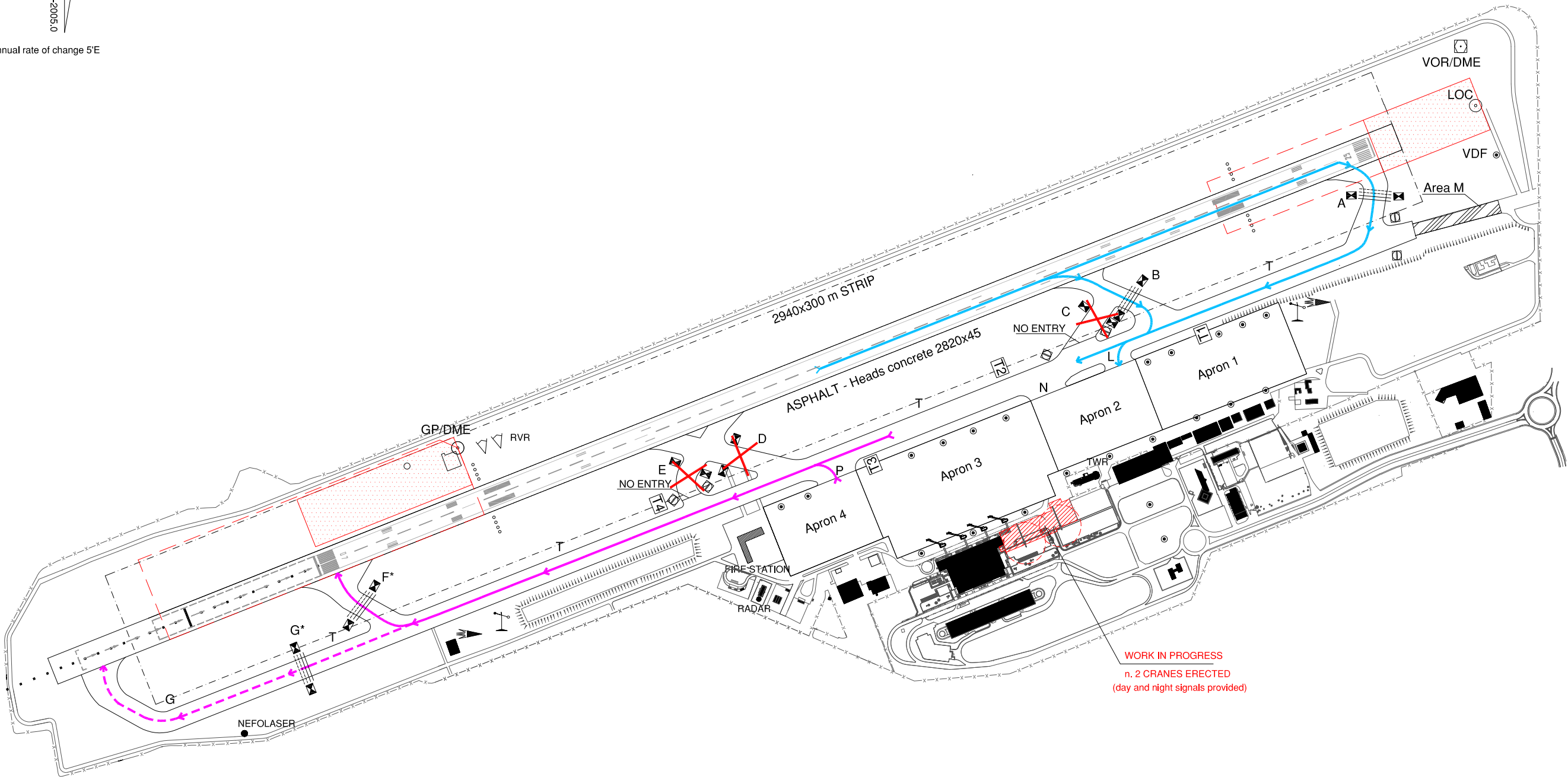
Annual rate of change 5'E



metres
feet



CHANGE: Updated chart



REMARKS:

- 1. RWY Guard Lights
- 2. NO ENTRY signs
- 3. Yellow lights
- 4. Intermediate Holding Position
- 5. C, D and E not usable when Low Visibility Procedures are in progress
- 6. (*) CAT I Runway Holding Position

- DEPARTING ACFT ROUTING
- DEPARTING ACFT ROUTING: Start Point RWY07 is usable only on request and previous RVR pilot assessment
- LANDING AND ABORTED TAKE-OFF PATH ACFT ROUTING
- CRITICAL AREA
- SENSITIVE AREA
- RWY STRIP boundary