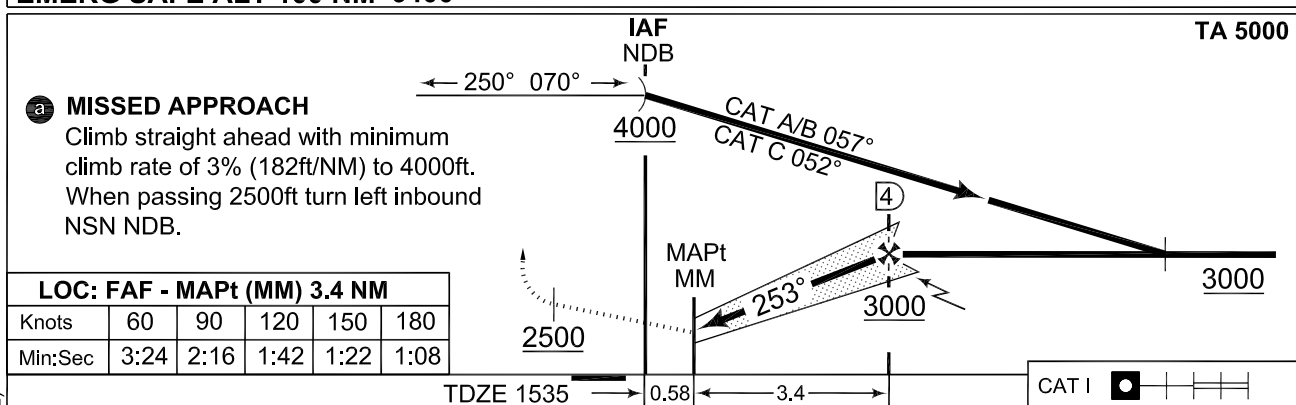
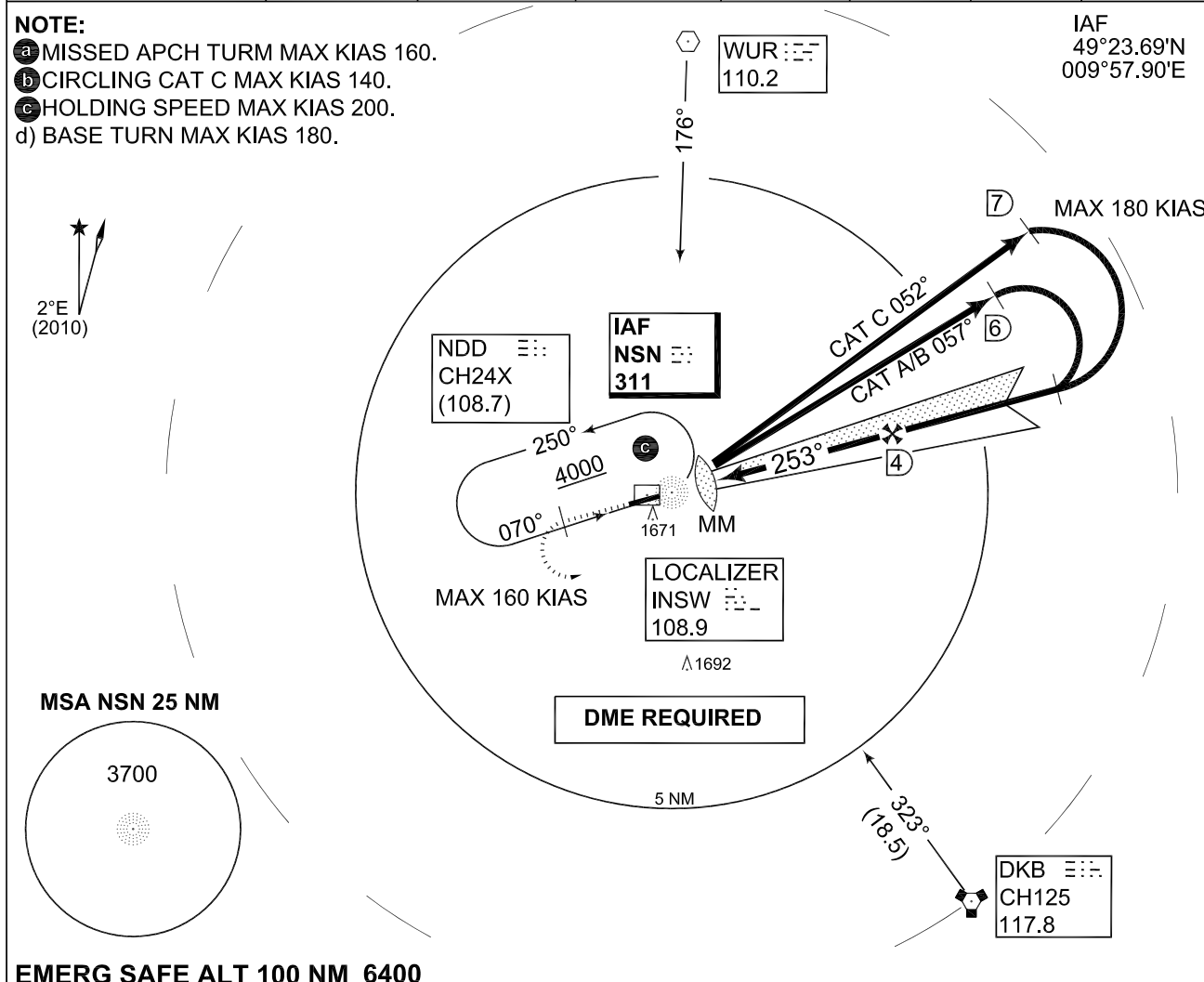


**MIPS
INSTRUMENT APPROACH CHART**

**ILS or LOC RWY 25
NIEDERSTETTEN (ETHN)**

LANGEN RADAR 398.650 135.725		STETTEN RADAR 251.250 139.300 135.600			STETTEN TWR 280.600 122.100		
LOCALIZER/NDB INSW 108.9/NSN 311	APP COURSE 253°	GS INTCP ALT 3000	GS 3.4%/5.9%	DA see CAT	TDZE 1535	ALS-Length 600 M	LDA 3979



CATEGORY	A	B	C
ILS 25	1735 - 0.8/750 200 (200-0.8/1.2)	1749 - 0.8/800 214 (300-0.8/1.2)	1758 - 0.8/800 223 (300-0.8/1.2)
LOC 25	1910 - 0.8 375 (400-0.8/1.6)		1910 - 1.2 375 (400-1.2/1.6)
b) CIRCLING	1970 - 1.6 434 (500-1.6)	1990 - 1.6 454 (500-1.6)	2100 - 2.4 564 (600-2.4)

ILS or LOC RWY 25 49°23.51'N 009°57.49'E **NIEDERSTETTEN (ETHN)**

CHANGE: EDITORIAL (27/1/12)

AFSBw 13 DEC 2012