

**MIPS
 INSTRUMENT APPROACH CHART**

AD ELEV 1536

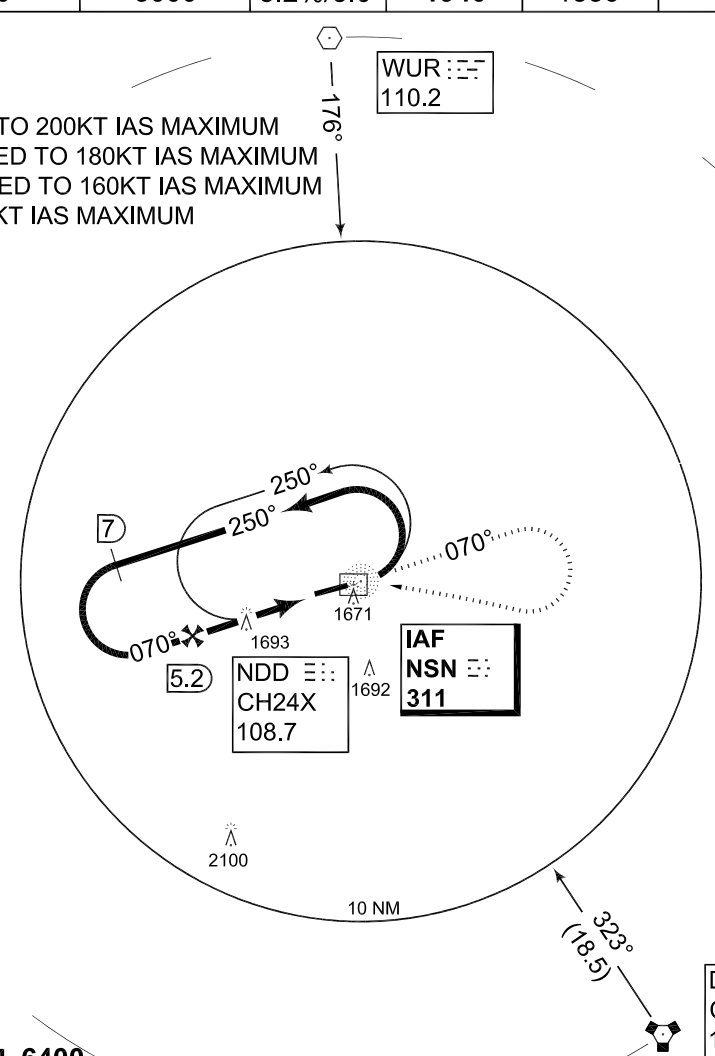
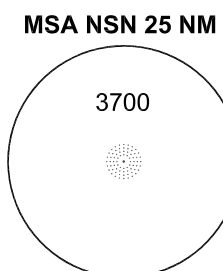
**NDB RWY 07
 NIEDERSTETTEN (ETHN)**

LANGEN RADAR 398.650 135.725		STETTEN RADAR 251.250 139.300 135.600			STETTEN TWR 280.600 122.100		
NDB NSN 311	APP COURSE 070°	FAF ALT 3000	Descent GR 5.2%/3.0°	MDA 1940	TDZE 1536	ALS-Length —	LDA 4299

NOTE:

- a) DME REQUIRED
- b) HOLDING SPEED LIMITED TO 200KT IAS MAXIMUM
- c) RACETRACK SPEED LIMITED TO 180KT IAS MAXIMUM
- d) MISSED APCH TURN LIMITED TO 160KT IAS MAXIMUM
- e) CIRCLING LIMITED TO 140KT IAS MAXIMUM

IAF
 49°23.69'N
 009°57.90'E



EMERG SAFE ALT 100 NM 6400

MISSED APPROACH
 Climb on NSN NDB track 070° to 4000 ft. When passing 2500 ft turn right inbound NSN NDB.

FAF - MAPt 4.2 NM					
Knots	60	90	120	150	180
Min:Sec	4:12	2:48	2:06	1:41	1:24

NO LIGHTS

IAF NDB TA 5000
 TDZE 1536

CATEGORY	A	B	C
NDB 07	1940 - 1.6 404 (500-1.6)		1940 - 2.0 404 (500-2.0)
e CIRCLING	1970 - 1.6 434 (500-1.6)	1990 - 1.6 454 (500-1.6)	2100 - 2.4 564 (600-2.4)

NDB RWY 07 49°23.51'N
009°57.49'E **NIEDERSTETTEN (ETHN)**

CHANGE: EDITORIAL (27/1/12)

AFSBw 13 DEC 2012