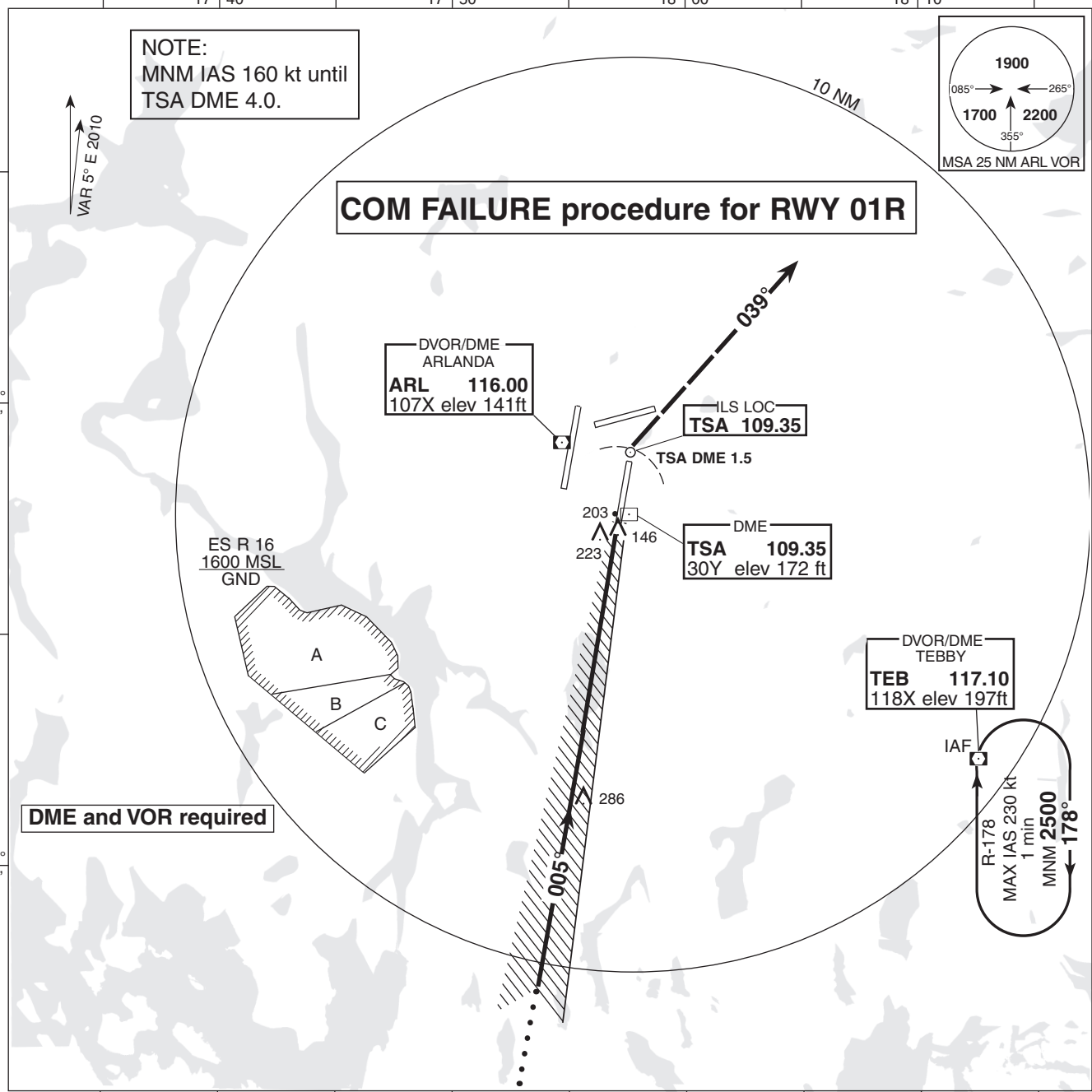


INSTRUMENT APPROACH CHART-ICAO
1: 250 000
1 0 1 2 3 4 5 km
1 0 1 2 3 NM

THR ELEV 137 ft, AD ELEV 137 ft
HGT are related to THR.
Circling HGT are related to AD ELEV.
BRG are MAG.
ALT, HGT and ELEV in ft.

ARLANDA TOWER 125.125/
118.500/128.725
ATIS ARR 119.000
STOCKHOLM CONTROL 123.750

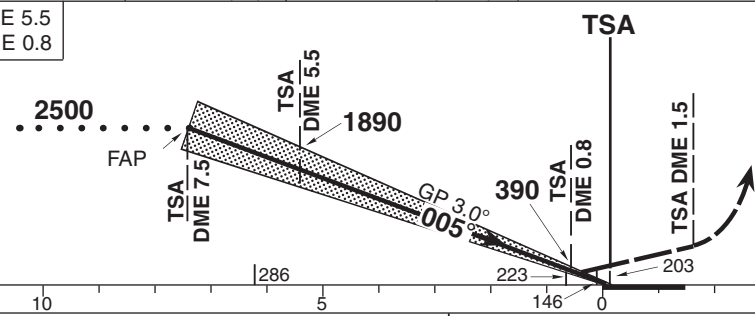
AD 2-ESSA-5-7
COM FAILURE PROC
ILS or LOC RWY 01R
STOCKHOLM/ARLANDA
SWEDEN



TRANSITION ALTITUDE 5000 MSL ILS RDH (51) PAPI GP 3.0° (5.2%) * TIMING NOT AUTHORIZED FOR DEFINING THE MAPt

OM replaced by TSA DME 5.5
MM replaced by TSA DME 0.8

LOC
FAF at TSA DME 7.5
TSA DME 5.5 1890
MAPt at TSA DME 0.8
Descent grad. 5.2%



CLIMB STRAIGHT AHEAD. AT 600 OR TSA DME 1.5 (PAST TSA DME), WHICHEVER IS LATEST, TURN RIGHT TO TRACK 039° CLIMBING. AT 2500 OR TSA DME 4.0 WHICHEVER IS LATEST, TURN RIGHT TO TEB VOR/DME. AT TEB INTERCEPT TEB R-223 AND PROCEED TO TEB DME 8.2. TURN RIGHT TO INTERCEPT LOC TSA, NOT BELOW 2500 UNTIL FAF/FAF (TSA DME 7.5.)

Cat of ACFT	OCA (H)				Final approach LOC Distance FAF-MAPt 6.6 NM *							
	A	B	C	D	DME TSA NM	7	6	5	4	3	2	
Cat I	289 (152)	300 (163)	314 (177)	328 (191)	ALT (HGT)	2360(2230)	2050(1920)	1730(1600)	1410(1280)	1090(960)	770(640)	
Cat II	192 (55)	204 (67)	219 (82)	236 (99)	Speed	kt	80	100	120	140	160	180
Straight-in	LOC				Time	min:s	4:59	3:59	3:19	2:51	2:29	2:13
	LOC SDF not received				Rate of descent	ft/min	425	535	640	745	850	960
Cat III B APPROVED												

LFV

CHANGE: Completely revised

COM FAILURE ESSA-ILS or LOC RWY 01R
AIRAC AMDT 7/2012 13 DEC 2012