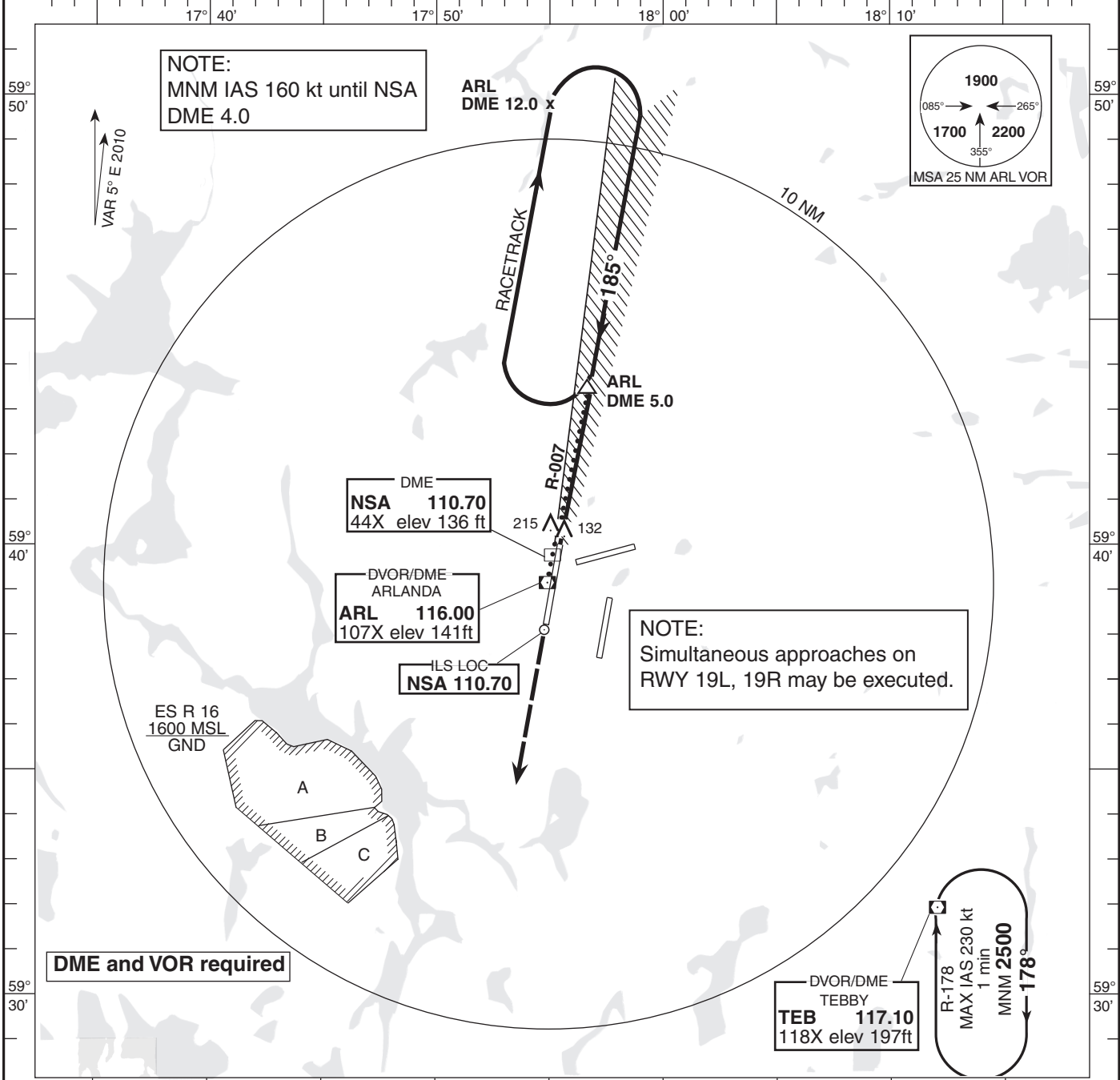
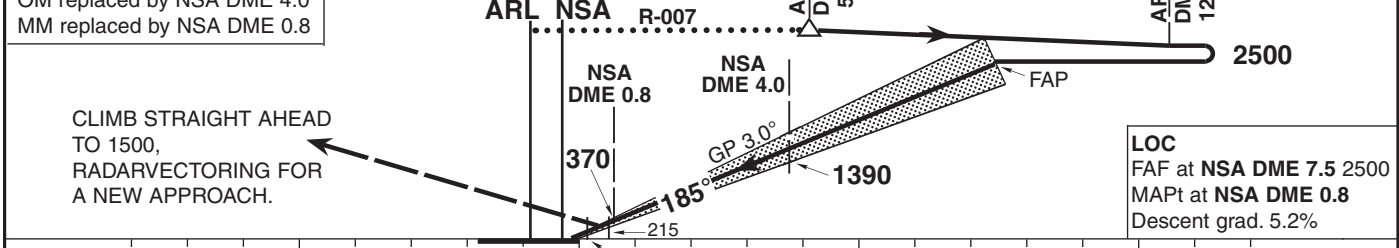


<b>AD 2-ESSA-5-2</b>	<b>ARLANDA TOWER</b> 118.500/ 125.125/128.725	<b>THR ELEV 118 ft, AD ELEV 137 ft</b> HGT are related to THR. Circling HGT are related to AD ELEV. BRG are MAG. ALT, HGT and ELEV in ft.	<b>INSTRUMENT APPROACH CHART-ICAO</b>
<b>ILS or LOC RWY 19R</b> <b>STOCKHOLM/ARLANDA SWEDEN</b>	<b>ATIS ARR</b> 119.000 <b>STOCKHOLM CONTROL</b> 123.750		1:250 000 1 0 1 2 3 4 5 km 1 0 1 2 3 NM



TRANSITION ALTITUDE 5000 MSL | ILS RDH (51) | PAPI GP 3.0° (5.2%) | SPECIAL COM FAILURE PROCEDURES SEE ESSA AD 2.22

\* TIMING NOT AUTHORIZED FOR DEFINING THE MAPt



OCA (H)						Final approach LOC Distance FAF-MAPt 6.7 NM *								
						DME NSA NM	7	6	5	4	3	2		
Cat of ACFT						ALT (HGT)	2340(2230)	2030(1920)	1710(1600)	1390(1280)	1070(960)	750(640)		
Straight-in						Speed	80		100	120	140	160	180	
						Time	min:s		5:01	4:01	3:21	2:52	2:31	2:14
						Rate of decent	ft/min		425	535	640	745	850	960