

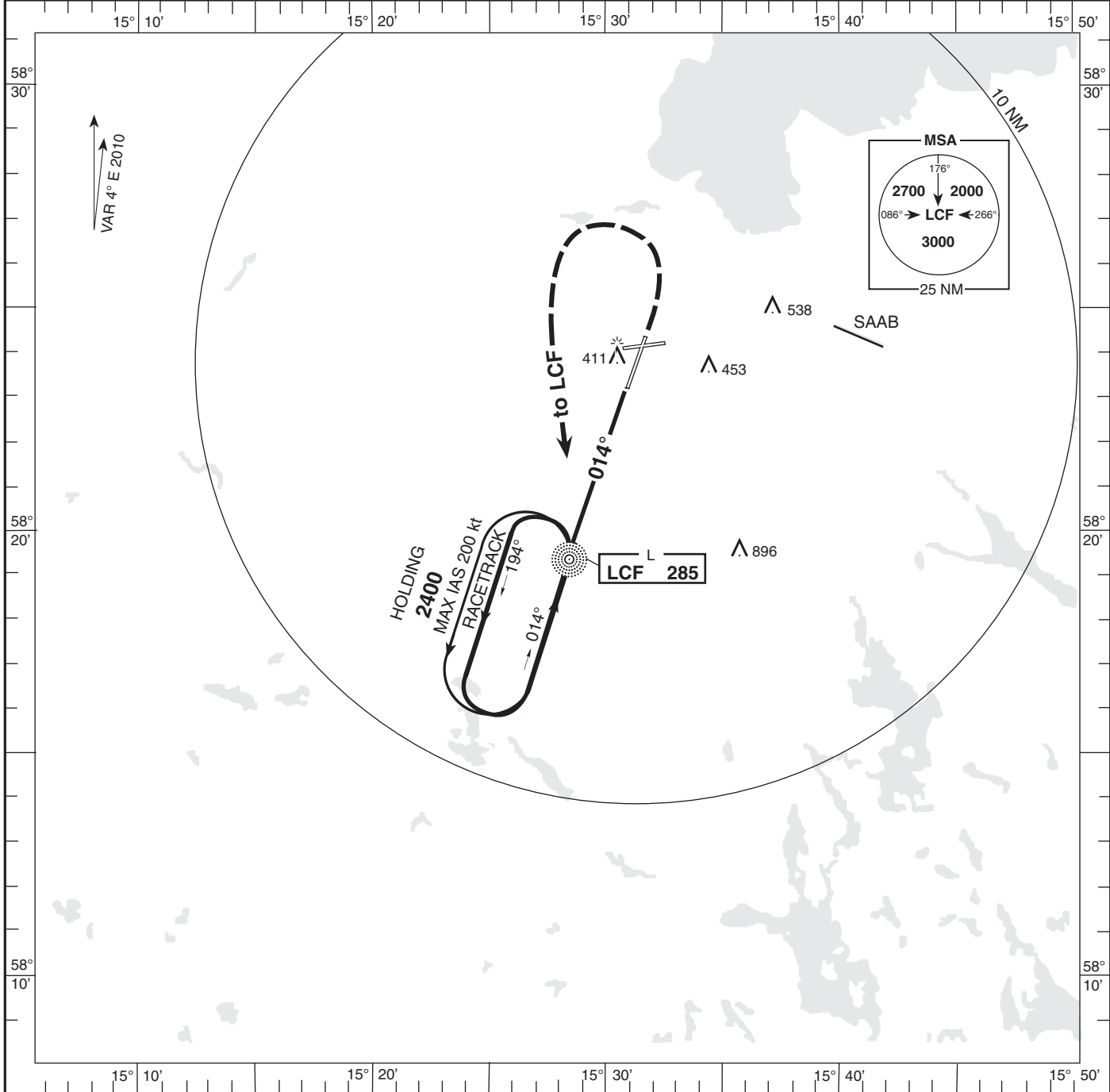
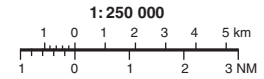
AD 2-ESCF-5-4

MALMEN TOWER
ÖSTGÖTA CONTROL
129.800
132.950
135.850

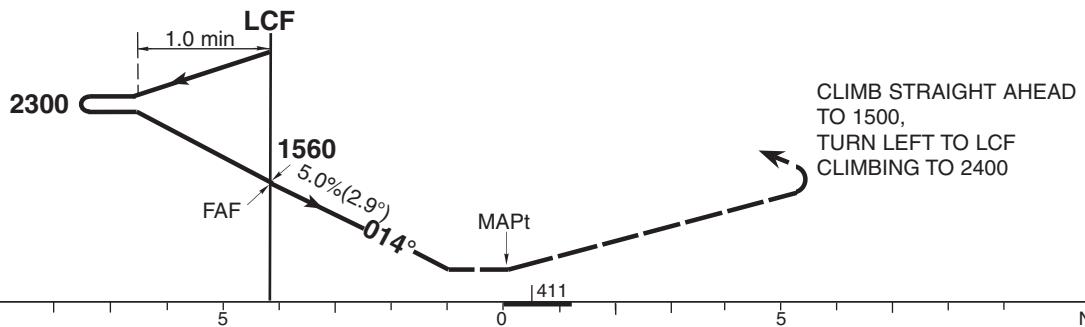
THR ELEV 250 ft, AD ELEV 308 ft
HGT are related to THR.
Circling HGT are related to AD ELEV.
BRG are MAG.
ALT, HGT and ELEV in ft.

INSTRUMENT
APPROACH CHART-ICAO

NDB RWY 01 (Cat C/D)
LINKÖPING/MALMEN
SWEDEN



TRANSITION ALTITUDE 5000 MSL | MAX SPEED WITHIN RACETRACK 200 kt IAS



OCA (H)			Final approach Distance FAF-MAPt 4.1 NM							
Cat of ACFT	C	D	Distance DME CFB	DME 6	DME 5	DME 4	DME 3			
Straight-in	660 (410)	660 (410)	ALT (HGT)	1820(1570)	1510(1260)	1210(960)	900(650)			
Circling	940 (640)	1290 (990)	Speed	kt	80	100	120	140	160	180
			Time	min:s	3:06	2:29	2:04	1:46	1:33	1:23
			Rate of decent	ft/min	405	505	605	710	810	910

ESCF-NDB RWY 01 (Cat C/D)
17 NOV 2011

AIRAC AMDT 6/2011

CHANGE: Cat H removed from IAC to
new IAC 5-5

LFV