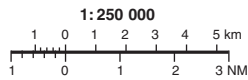


INSTRUMENT
APPROACH CHART-ICAO

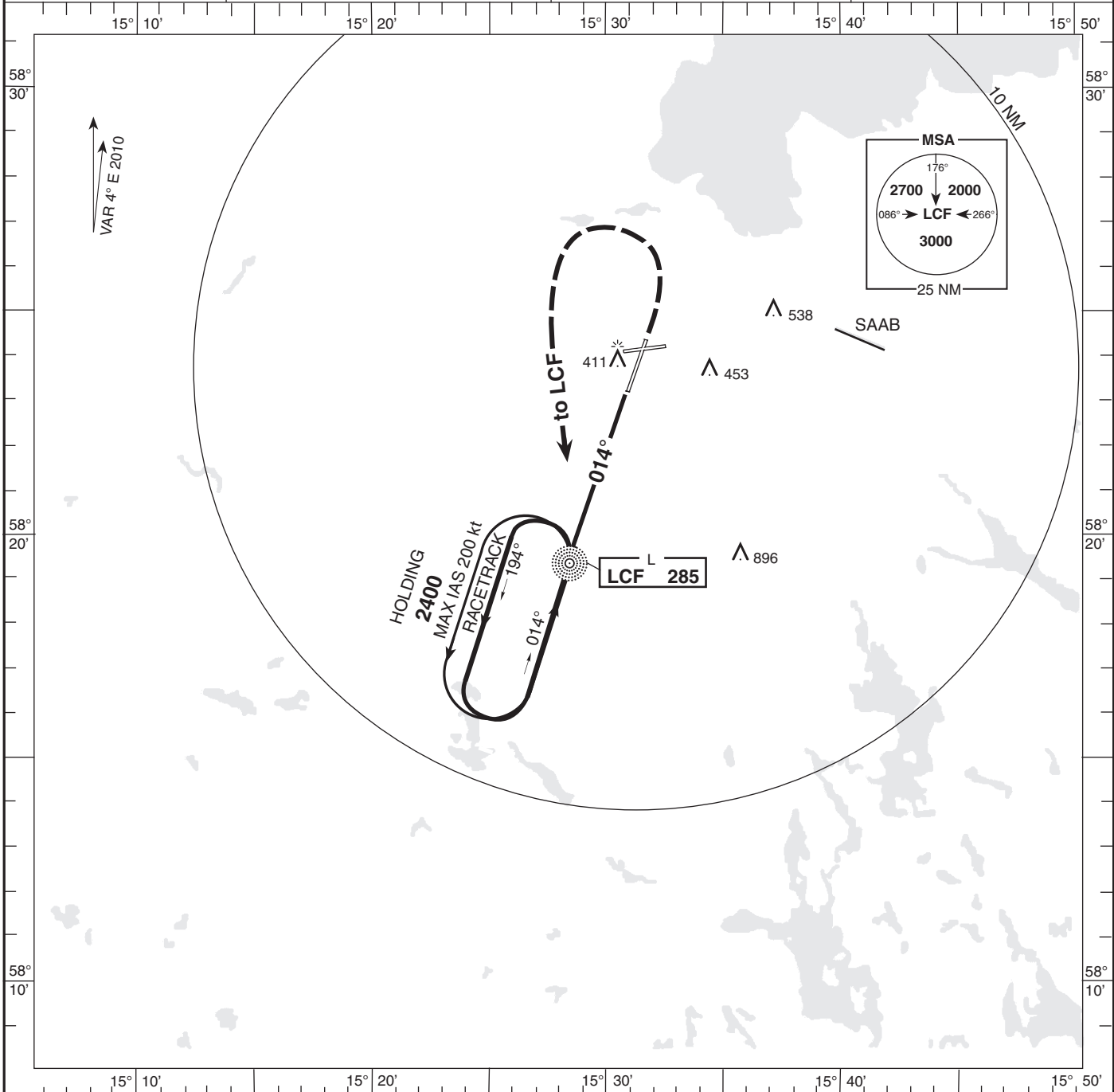


THR ELEV 250 ft, AD ELEV 308 ft
HGT are related to THR.
Circling HGT are related to AD ELEV.
BRG are MAG.
ALT, HGT and ELEV in ft.

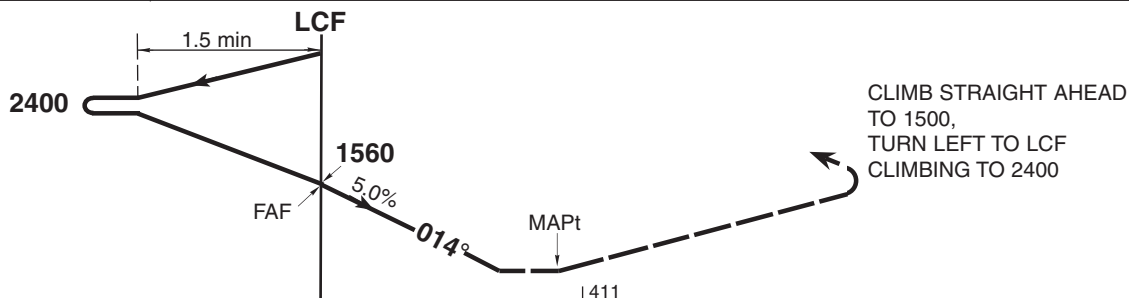
MALMEN TOWER 129.800
ÖSTGÖTA CONTROL 132.950
135.850

AD 2-ESCF-5-3

NDB RWY 01 (Cat A/B)
LINKÖPING/MALMEN
SWEDEN



TRANSITION ALTITUDE 5000 MSL



NM 10 5 0 5 10 NM

OCA (H)			Final approach Distance FAF-MAPt 4.13 NM					
Cat of ACFT	A	B	Distance DME CFB	DME 6	DME 5	DME 4	DME 3	
Straight-in	660 (410)	660 (410)	ALT (HGT)	1820(1570)	1510(1260)	1210(960)	900(650)	
Circling	750 (450)	840 (540)	Speed	kt	70	90	110	130
			Time	min:s	3:32	2:45	2:15	1:54
			Rate of decent	ft/min	355	460	560	660

LFV

CHANGE: VAR, procedure name

ESCF-NDB RWY 01 (Cat A/B)
AIRAC AMDT 2/2011 **7 APR 2011**