

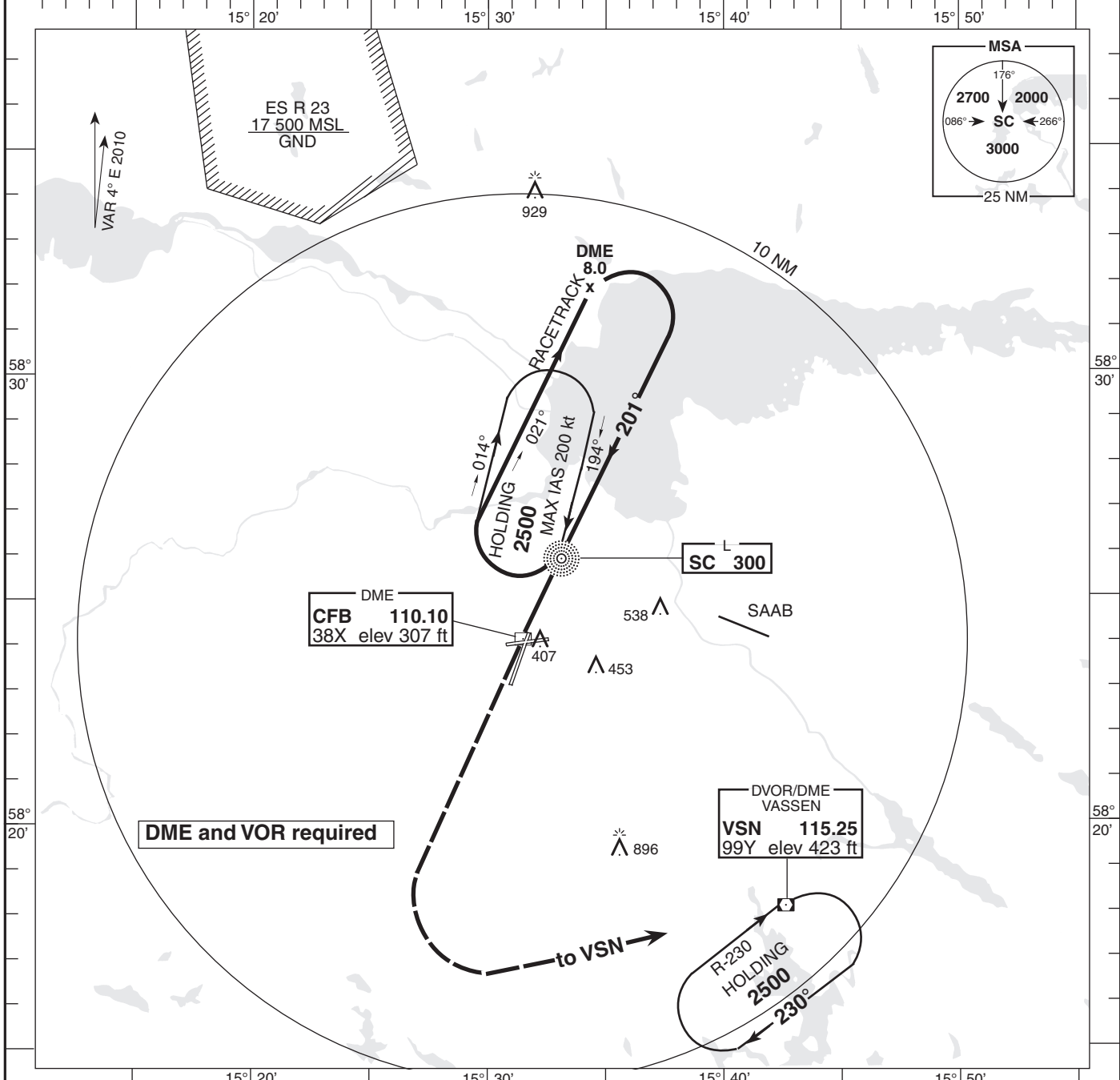
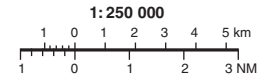
AD 2-ESCF-5-2

MALMEN TOWER 129.800
ÖSTGÖTA CONTROL 132.950
 135.850

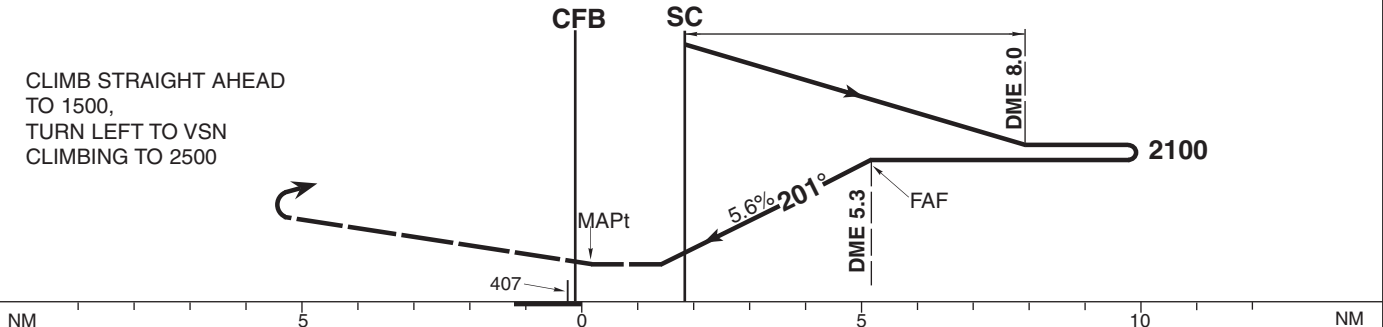
THR ELEV 295 ft, AD ELEV 308 ft
 HGT are related to THR.
 Circling HGT are related to AD ELEV.
 BRG are MAG.
 ALT, HGT and ELEV in ft.

INSTRUMENT
APPROACH CHART-ICAO

NDB RWY 19
LINKÖPING/MALMEN
SWEDEN



TRANSITION ALTITUDE 5000 MSL | PAPI GP 5.6% | MAX SPEED WITHIN RACETRACK 200 kt IAS | FINAL APCH LINE 7° FM QFU 194°



Cat of ACFT	OCA (H)				Final approach Distance FAF-MAPt 5.13 NM							
	A	B	C	D	Distance DME CFB	DME 5	DME 4	DME 3	DME 2			
Straight-in	660 (370)				ALT (HGT)	1990(1700)	1650(1360)	1310(1020)	970(680)			
Circling	750 (450)	840 (540)	940 (640)	1290 (990)	Speed	kt	80	100	120	140	160	180
					Time	min:s	3:51	3:05	2:34	2:12	1:56	1:43
					Rate of descent	ft/min	455	570	680	795	910	1020

ESCF-NDB RWY 19
7 APR 2011

AIRAC AMDT 2/2011

CHANGE: VAR, procedure name

LFV