

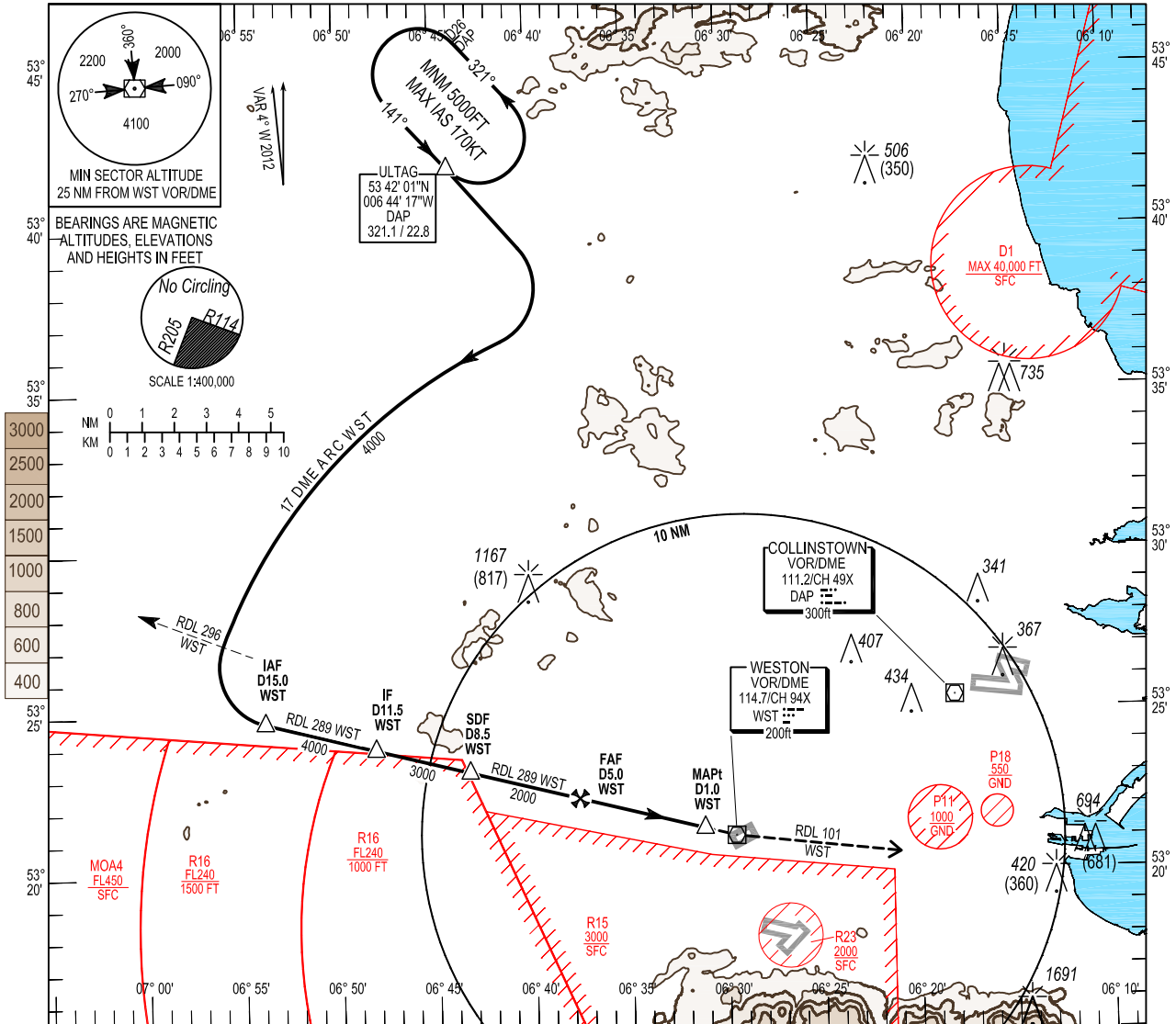
**INSTRUMENT APPROACH CHART - ICAO**

**AERODROME ELEV 155 ft**  
 HEIGHTS RELATED TO AD - ELEV 155 ft

|             |         |
|-------------|---------|
| DUBLIN APP  | 121.100 |
| WESTON TWR  | 122.400 |
| WESTON GND  | 119.425 |
| WESTON ATIS | 118.875 |

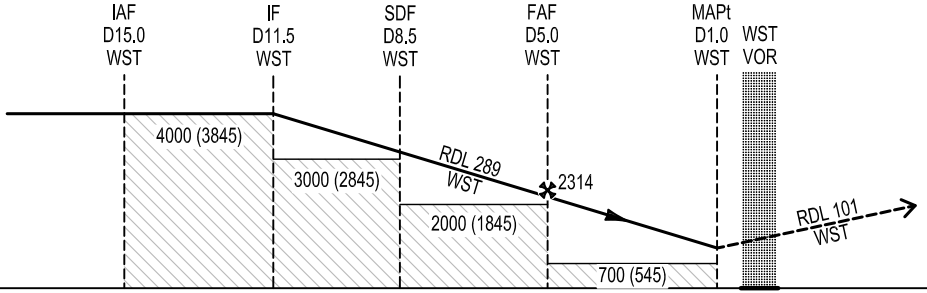
CONSULT NOTAM FOR LATEST INFORMATION

**WESTON / WESTON**  
 VOR - B (ACFT CAT A, B.)

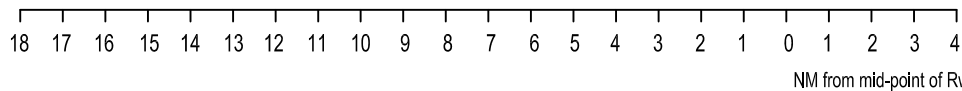


**TRANSITION ALTITUDE 5000 ft**

Change: Co ordinate on verso



**MISSED APPROACH:**  
 Climb on RDL 101 WST VOR/DME to 2000ft QNH, or as previously briefed, and contact Dublin App on 121.100  
 (In the event of a COMMS failure, carry out the missed approach, climbing to 5000ft QNH and at D10 WST turn left to DAP to join DAP RDL 321 to ULTAG.  
 From ULTAG complete the IAP to EIDW RWY 16 to land or circle to land on the active RWY.)  
 ELEV 152 ft (THR RWY 25)  
 ELEV 155 ft (THR RWY 07)



|  |           |           |                                       |             |             |             |             |             |
|--|-----------|-----------|---------------------------------------|-------------|-------------|-------------|-------------|-------------|
| OCA (H)  | A         | B         | Recommended Profile on Final Approach |             |             |             |             |             |
| VISUAL MANOEUVRING   | 700 (545) | 800 (645) | DME                                   | 6.0         | 5.0         | 4.0         | 3.0         | 2.0         |
| <b>DME required</b><br>Expect visual landing instructions from ATC Weston.<br>No Circling SE of the RWY between RDL 114 and 205 WST.<br>See visual circling procedures for Runway 07/25. |           |           | ALT (HT)                              | 2642 (2487) | 2314 (2159) | 1988 (1833) | 1663 (1508) | 1340 (1185) |
|  |           |           | Descent Rate 5.2%, (3°), 318 ft/NM    |             | kts         | 80          | 100         | 120         |
|  |           |           | ft / min                              | 425         | 530         | 635         | 745         | 850         |

**RWY 07/25 VOR B Initial, Intermediate and Final Approach**

| Descent Angle            | 3.00°                   |                         |                         |                          |                         |
|--------------------------|-------------------------|-------------------------|-------------------------|--------------------------|-------------------------|
| Fix                      | IAF                     | IF                      | SDF                     | FAF                      | MAPt                    |
| Fix coordinates          | 532447.7N<br>0065356.2W | 532359.5N<br>0064815.2W | 532313.1N<br>0064319.1W | 532222.3 N<br>0063740.2W | 532124.6N<br>0063115.2W |
| Fix formation Bearing °T | 284.55 WST              | 284.55 WST              | 284.55 WST              | 284.55 WST               | 284.55 WST              |
| Fix Formation Distances  | 15.00 WST               | 11.50 WST               | 8.50 WST                | 5.00 WST                 | 1.00 WST                |

**Holding identification EIWT VOR B - NON RNAV**

| HOLDING FIX | LATITUDE (N),<br>LONGITUDE (W) | INBOUND<br>TRUE<br>TRACK<br>(degrees) | INBOUND<br>MAGNETIC<br>TRACK<br>(degrees) | MAXIMUM<br>INDICATED<br>AIRSPEED<br>(kts) | MAXIMUM<br>/MINIMUM<br>HOLDING<br>ALTITUDE<br>/ LEVEL<br>(FL/ft) | TIME /<br>DISTANCE<br>OUTBOUND | DIRECTION<br>OF TURN |
|-------------|--------------------------------|---------------------------------------|---|---|--|--------------------------------|----------------------|
| ULTAG       | 534201.0 /<br>0064417.2        | 136.7                                 | 141                                       | 170                                       | F060 /<br>A5000  | DAP DME D26                    | L                    |