

**INSTRUMENT APPROACH CHART-ICAO**

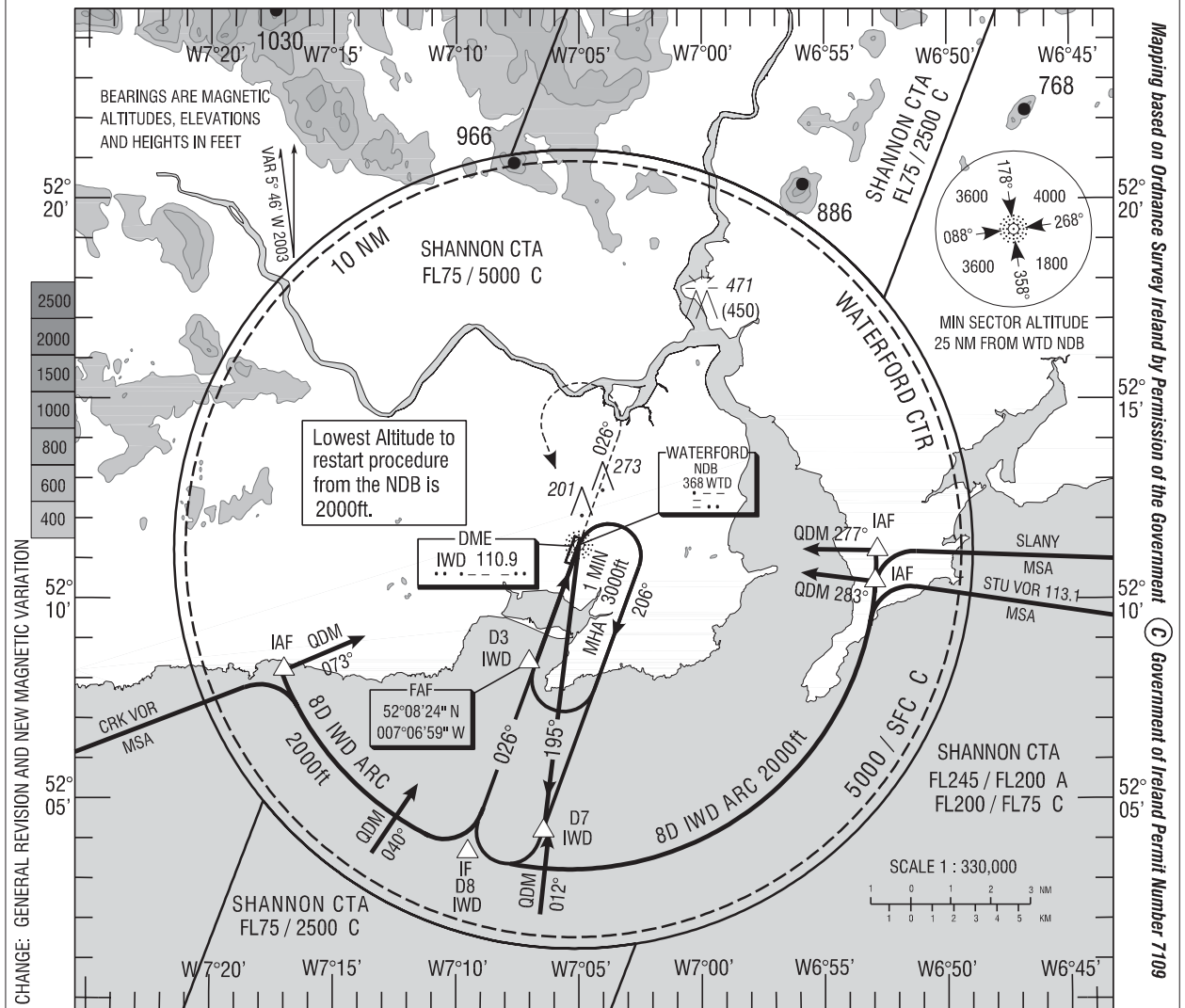
**AERODROME ELEV 119 ft**  
 HEIGHTS RELATED TO THR  
 RWY 03 - ELEV 86 ft

Tower 129.85  
 ATIS 121.15  
 Shannon 124.7

CONSULT NOTAM FOR LATEST INFORMATION

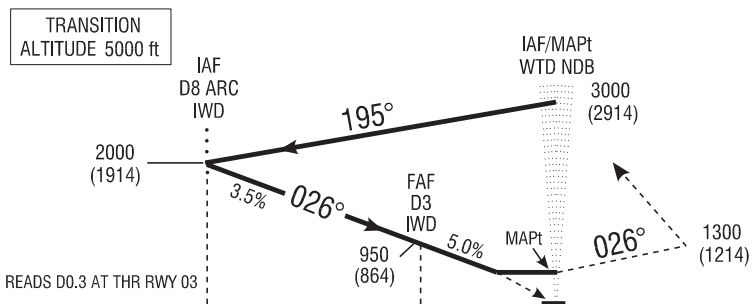
**WATERFORD / WATERFORD NDB/DME RWY 03**  
 (ACFT CAT A, B)

PROCEDURE NOT AVAILABLE WITHOUT DME



CHANGE: GENERAL REVISION AND NEW MAGNETIC VARIATION

Mapping based on Ordnance Survey Ireland by Permission of the Government © Government of Ireland Permit Number 7109



**MISSED APPROACH:** At or before MAPt climb straight ahead. At 1300 (1214)ft or 3 DME IWD whichever is later climbing left turn to return to WTD NDB at 2000(1914)ft, or as directed.

ELEV 86ft (THR RWY 03)



OCA (H)	A	B	Note: Instrument approaches only available when Air Traffic Control Zone is active unless authorised by Operating Standards Dept of the Irish Aviation Authority.	Recommended profile on Final Approach Descent Rate 5.0% (2.8°), 30ft / NM						
Straight - in Approach	450 (364)			DME	3 DME	2 DME	1 DME			
Visual Manoeuvring (Circling)	590 (471)	690 (571)		ALT/HT	950 (864)	650 (564)	350 (264)			
				Ground speed	kts	70	80	100	120	140
				Rate of descent	ft / min	350	400	500	600	700