

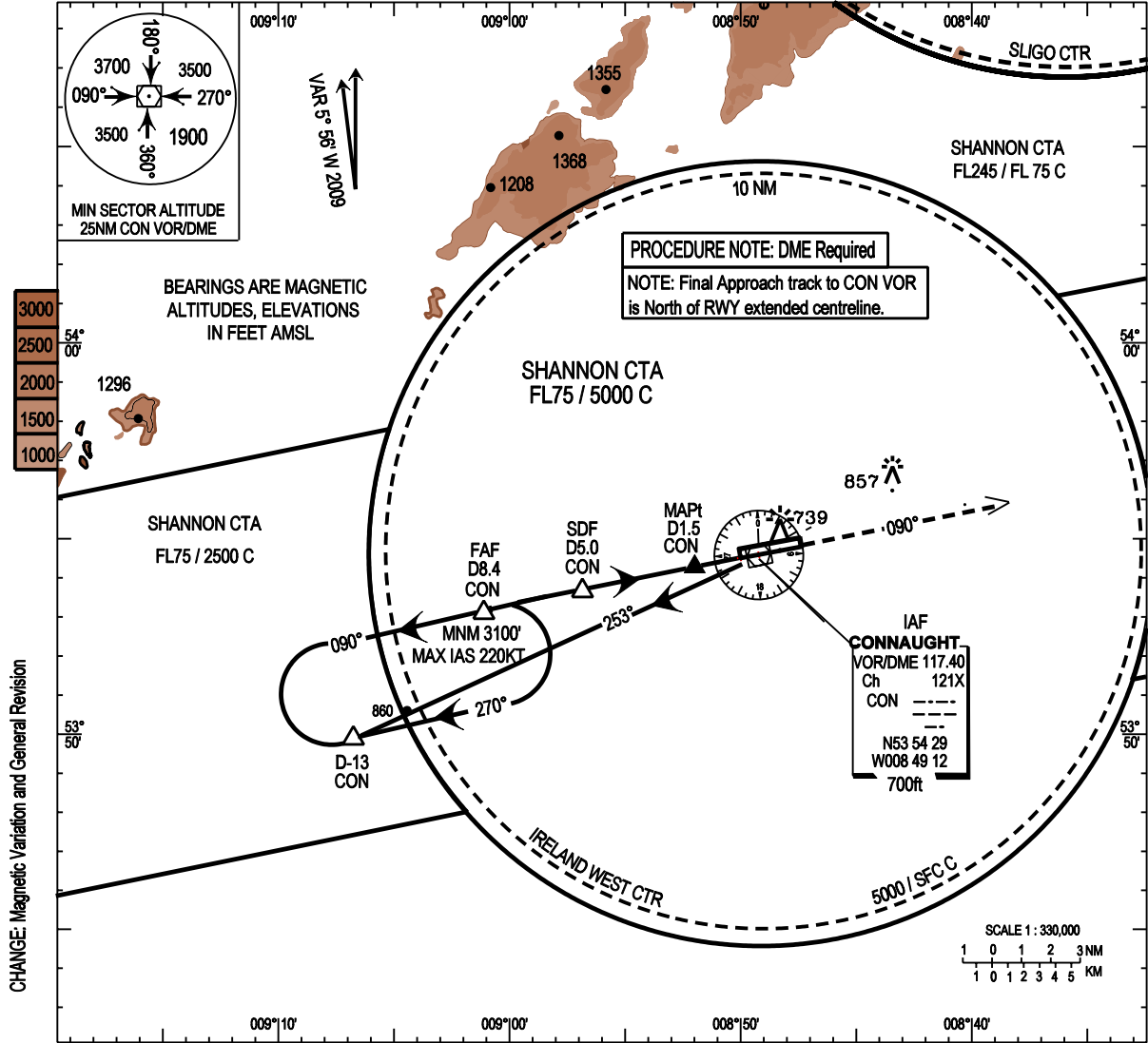
**INSTRUMENT  
APPROACH  
CHART - ICAO**

**AERODROME ELEV 665ft**  
HEIGHTS RELATED TO  
THR RWY 09 - ELEV 592ft

TWR 130.7  
GND 121.9  
Emerg 121.5

CONSULT NOTAM  
FOR LATEST  
INFORMATION

**IRELAND WEST/KNOCK  
VOR RWY 09**  
(ACFT CAT A,B,C,D)



**TRANSITION  
ALTITUDE 5000FT**

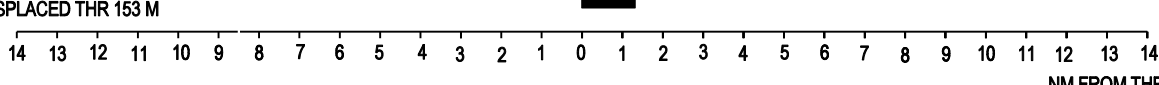
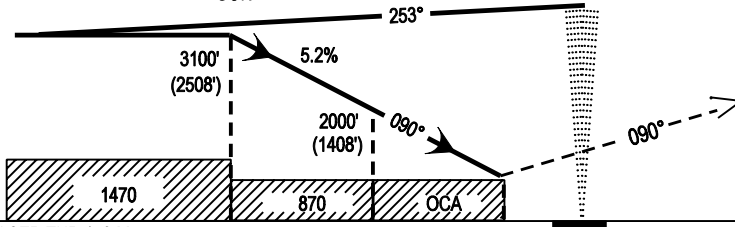
**FAF  
D8.4  
CON**

**SDF  
D5.0  
CON**

**MAPt  
D1.5  
CON**

**IAF  
CON VOR/DME  
4000' (3408')**

**MISSED APPROACH:**  
At the MAPt, climb on  
track 090 to 3000ft.  
Contact ATC.



OCA (H)	A	B	C	D	Ideal Altitude (Height) on Final Approach								
					D8.0 CON	D7.0 CON	D6.0 CON	D5.0 CON	D4.0 CON	D3.0 CON	D2.0 CON		
STRAIGHT-IN APPROACH	← 870 (278) →				2973(2381)	2707(2115)	2391(1799)	2075(1483)	1759(1168)	1444(852)	1128(536)		
VISUAL MANOEUVRING (These heights are AAL)	1060 (395)	1160 (495)	1260 (595)	1360 (695)	Ground Speed		Kts	70	90	100	120	140	160
					Rate of Decent 5.2%(3°), 318 ft/NM		Ft/Min	369	474	527	632	737	843

Mapping based on Ordnance Survey Ireland by Permission of the Government © Government of Ireland Permit Number 7109