

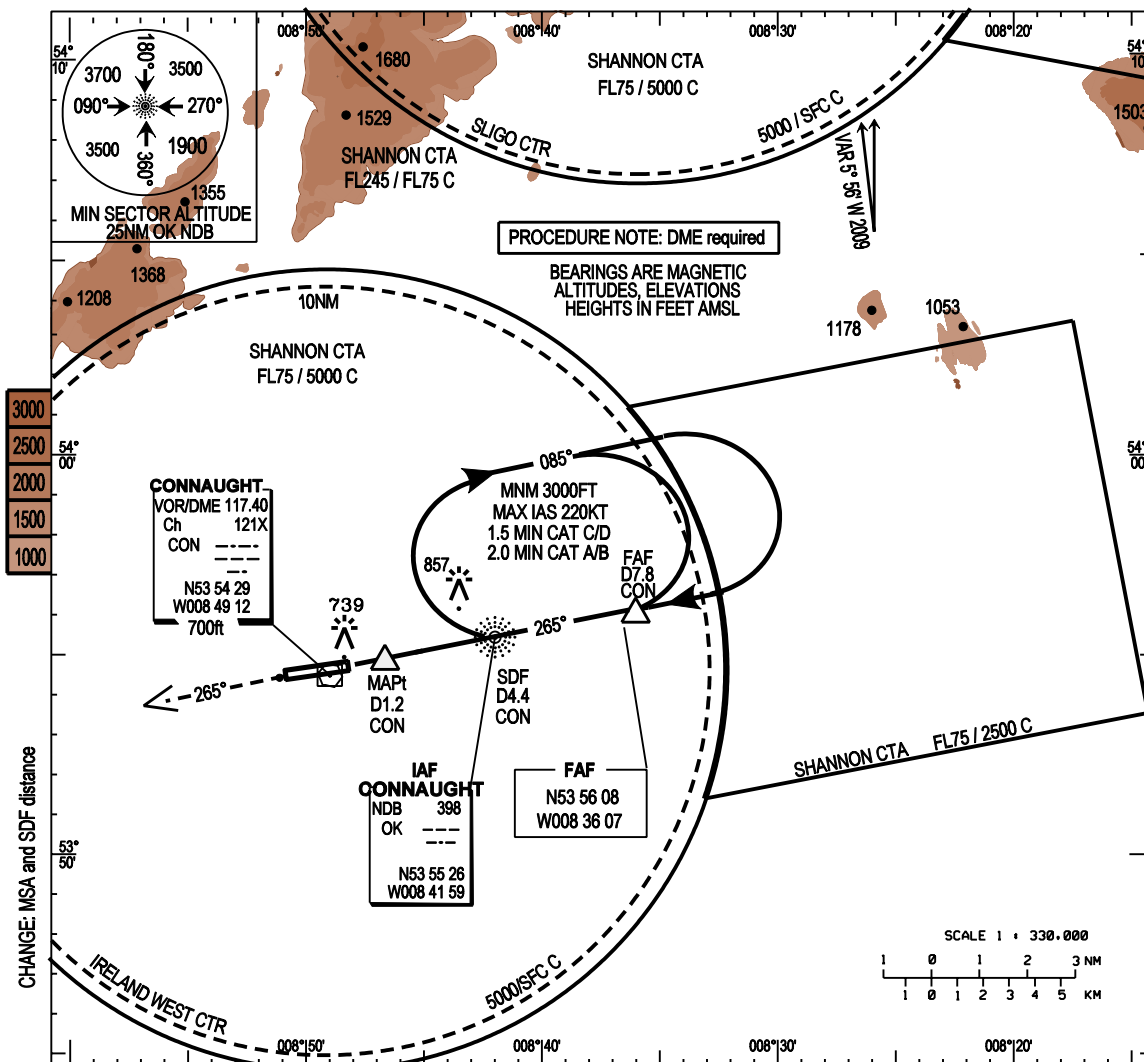
INSTRUMENT APPROACH CHART-ICAO

AERODROME ELEV 665ft
HEIGHTS RELATED TO THR RWY 27 - ELEV 665ft

TWR 130.7
GND 121.9
Emerg 121.5

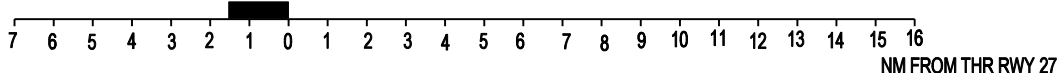
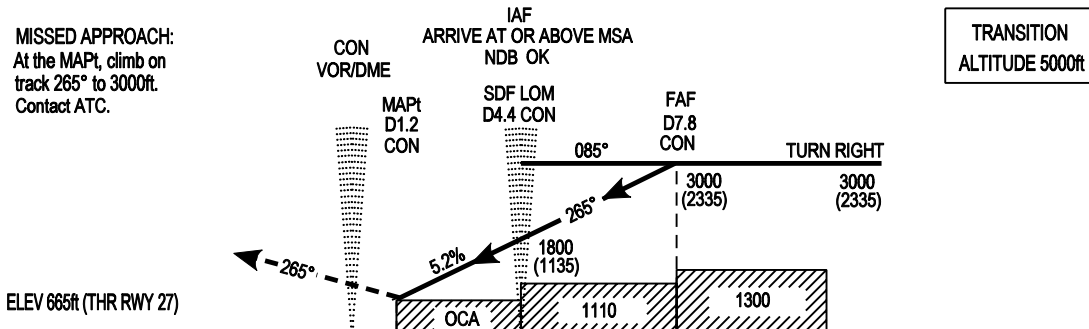
CONSULT NOTAM FOR LATEST INFORMATION

IRELAND WEST/KNOCK NDB RWY 27
(ACFT CAT A,B,C,D)



Mapping based on Ordnance Survey Ireland by Permission of the Government © Government of Ireland Permit Number 7109

MISSED APPROACH:
At the MAPt, climb on track 265° to 3000ft. Contact ATC.



| OCA (H) | A | B | C | D | Ideal Altitude/Height on Final Approach | | | | | | | |
|---|---------------|-----------|-----------|-----------|---|-------------|-------------|-------------|------------|------------|-----|-----|
| | | | | | D7 CON | D6 CON | D5 CON | D4 CON | D3 CON | D2 CON | | |
| Straight - in Approach | ← 990 (325) → | | | | 2750 (2085) | 2430 (1765) | 2110 (1445) | 1790 (1125) | 1470 (805) | 1160 (495) | | |
| | 1060(395) | 1160(495) | 1260(595) | 1360(695) | Descent Rate - 5.2% (3°), 318 ft/NM | | Kts | 70 | 90 | 100 | 120 | 140 |
| VISUAL MANOEUVRING (These heights are AAL) | | | | | | FT/MIN | 370 | 480 | 530 | 640 | 740 | 850 |