

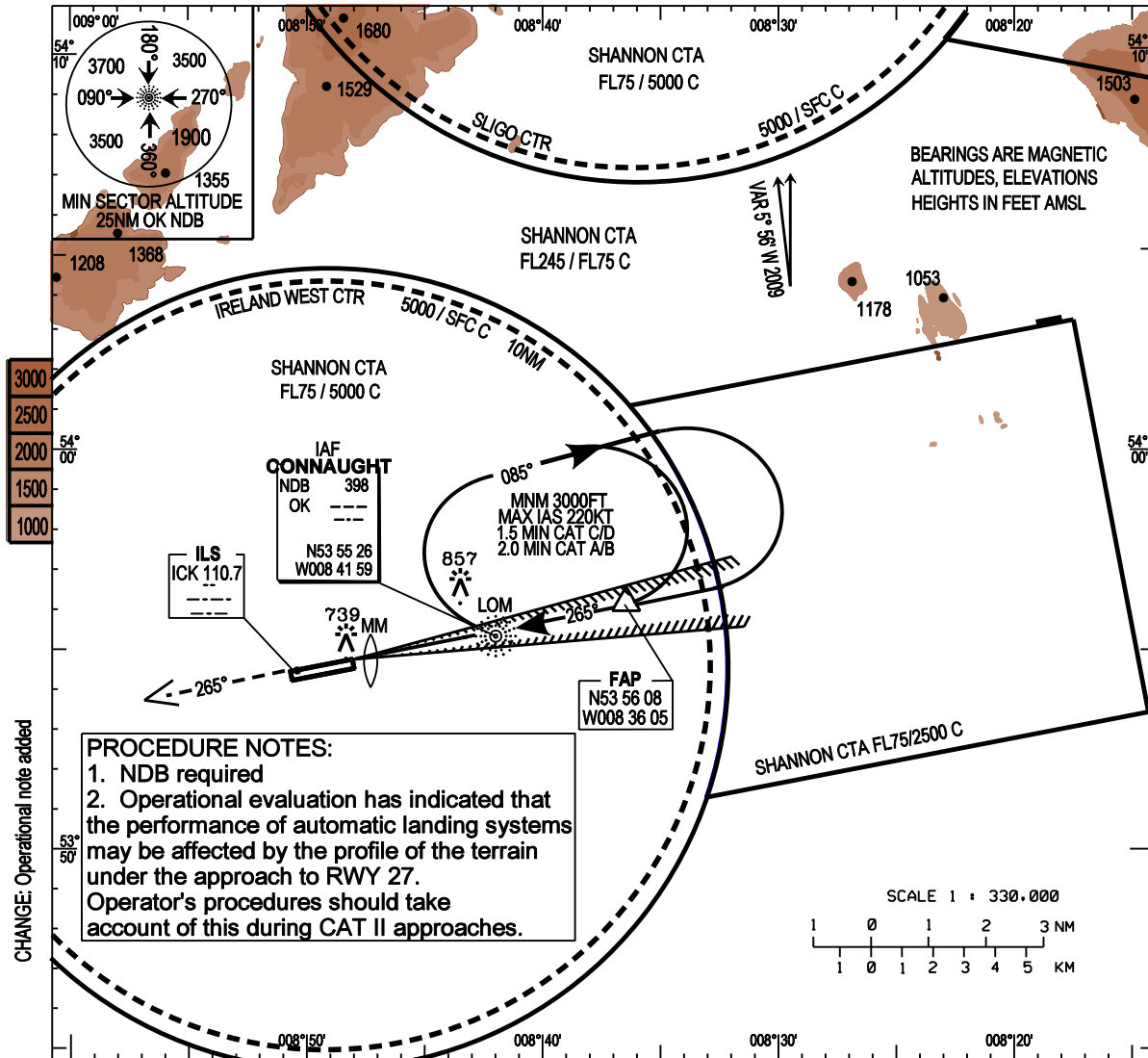
**INSTRUMENT
APPROACH
CHART-ICAO**

AERODROME ELEV 665ft
HEIGHTS RELATED TO
THR RWY 27 - ELEV 665ft

TWR 130.7
GND 121.9
Emerg 121.5

CONSULT NOTAM
FOR LATEST
INFORMATION

IRELAND WEST/KNOCK
ILS B CAT I & CAT II RWY 27
(ACFT CAT A,B,C,D)

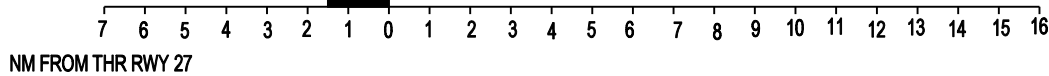
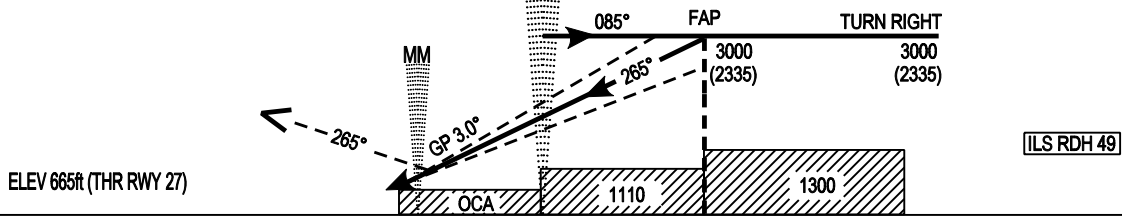


PROCEDURE NOTES:
1. NDB required
2. Operational evaluation has indicated that the performance of automatic landing systems may be affected by the profile of the terrain under the approach to RWY 27. Operator's procedures should take account of this during CAT II approaches.

MISSED APPROACH:
At the MAPt climb on track 265° to 3000ft. Contact ATC

IAF
ARRIVE AT OR ABOVE MSA
LOM
OK

**TRANSITION
ALTITUDE 5000ft**



OCA (H)		A	B	C	D								
Straight in Approach	CAT I	810 (145)	810 (145)	820 (155)	830 (165)	Decent Rate - 5.2%	Kts	70	90	100	120	140	160
	CAT II	715 (50)	725 (60)	740 (75)	755 (90)		FT/MIN	370	480	530	640	740	850
VISUAL MANOEUVRING (These heights are AAL)		1060(395)	1160(495)	1260(595)	1360(695)	(3°), 318 ft/NM							