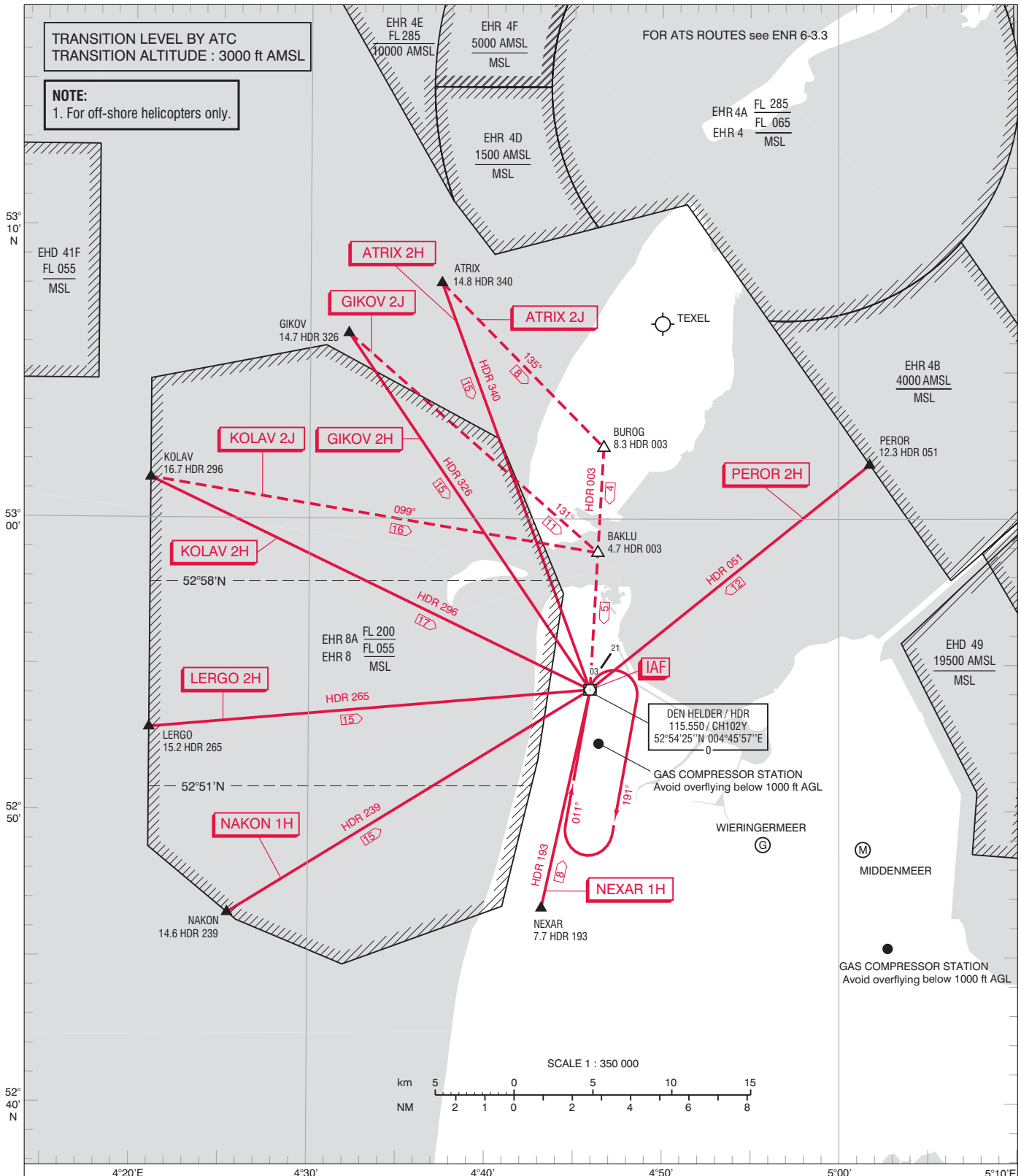


TRANSITION LEVEL BY ATC
TRANSITION ALTITUDE : 3000 ft AMSL

NOTE:
1. For off-shore helicopters only.

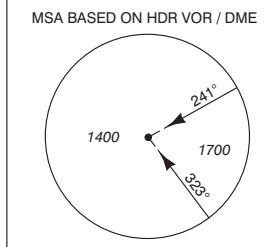


DISTANCES IN NM
ALTITUDES IN FEET
DIRECTIONS ARE MAGNETIC

AVERAGE VAR 0° E (2010)

→ STAR
- - - STAR WHEN ACTIVITIES IN EHR 8

APP	132.025	RAPCON North
	337.000	
	124.225	De Kooy Arrival
	341.550	
TWR	120.125	De Kooy Tower
	234.800	



CHANGE: BUROG and BAKLU addsect. editorial.