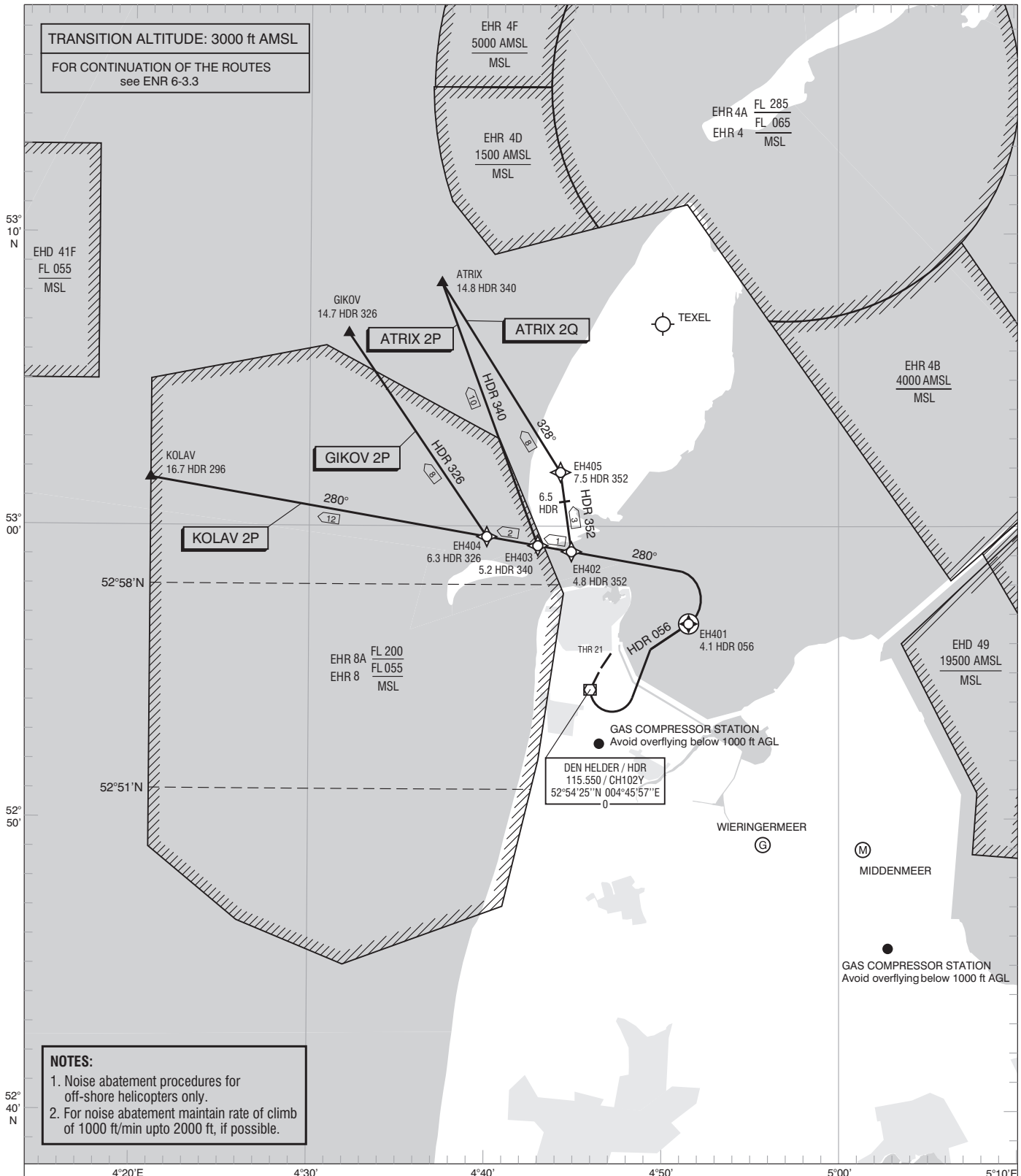
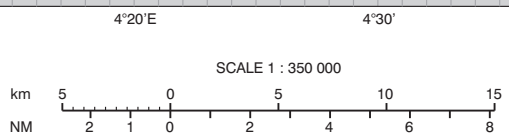


TRANSITION ALTITUDE: 3000 ft AMSL  
FOR CONTINUATION OF THE ROUTES  
see ENR 6-3.3

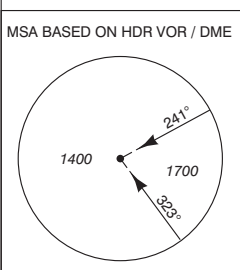


**NOTES:**  
1. Noise abatement procedures for off-shore helicopters only.  
2. For noise abatement maintain rate of climb of 1000 ft/min upto 2000 ft, if possible.



THR 21	52°55'35"N	004°47'02"E
EH401	52°56'40"N	004°51'31"E
EH402	52°59'08"N	004°44'52"E
EH403	52°59'20"N	004°42'57"E
EH404	52°59'38"N	004°40'04"E
EH405	53°01'50"N	004°44'14"E

TWR	120.125	De Kooy Tower
	234.800	
APP	132.025	RAPCON North
	337.000	
	124.225	De Kooy Arrival
	341.550	



DISTANCES IN NM  
ALTITUDES IN FEET  
DIRECTIONS ARE MAGNETIC  
AVERAGE VAR 0° E (2010)  
23.1 SPY 304.2 DME SPY 23.1 NM  
VOR SPY RADIAL 304.2

- SID
- ATS ROUTE
- - - VOR RADIAL
- - - BEARING