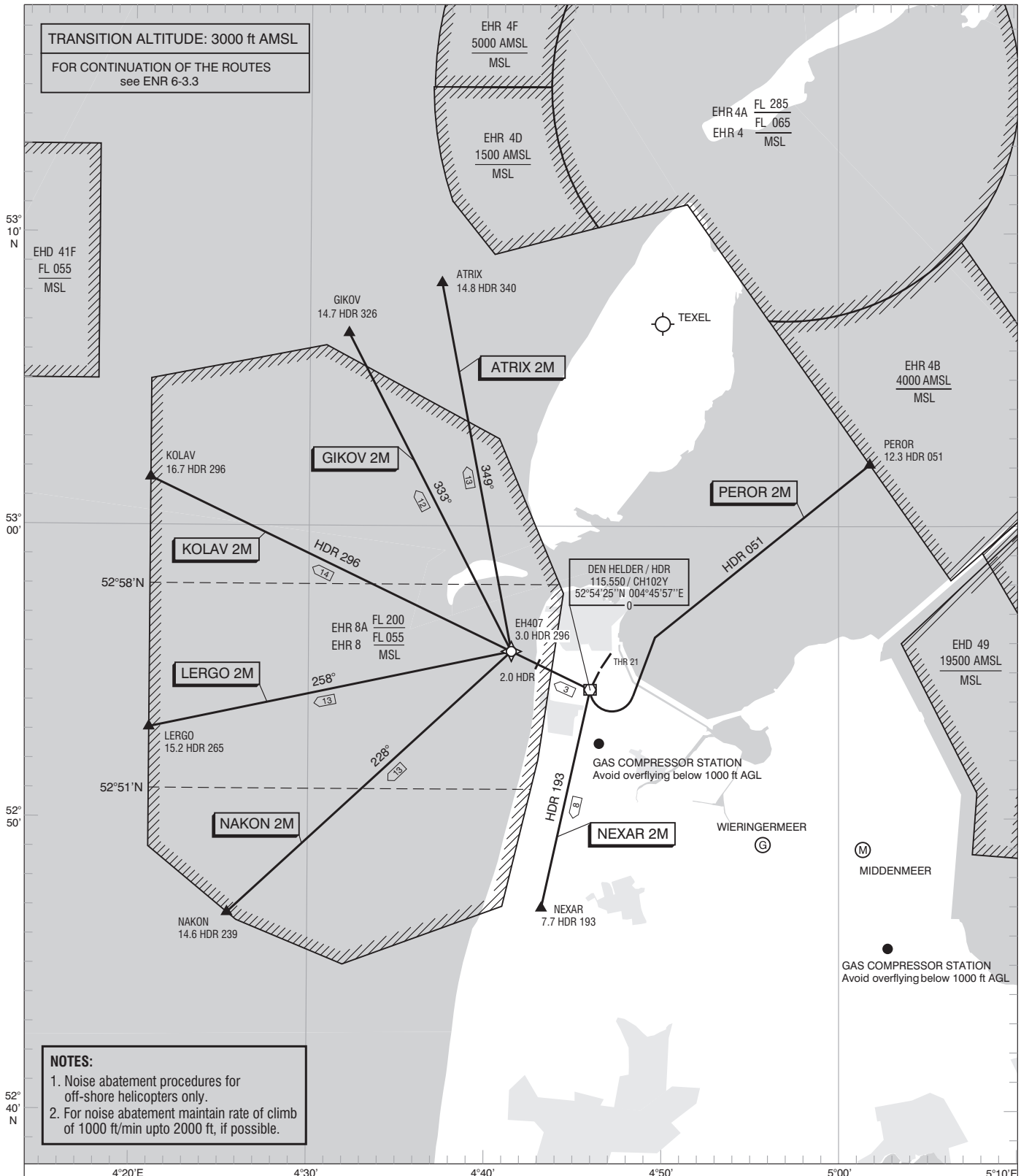
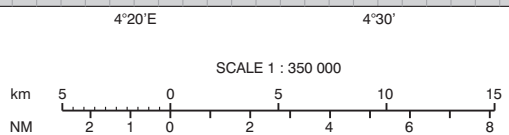


TRANSITION ALTITUDE: 3000 ft AMSL
FOR CONTINUATION OF THE ROUTES
see ENR 6-3.3



NOTES:

- Noise abatement procedures for off-shore helicopters only.
- For noise abatement maintain rate of climb of 1000 ft/min upto 2000 ft, if possible.

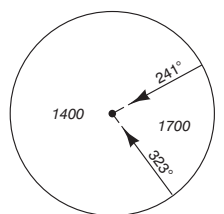


SCALE 1 : 350 000

THR 21 52°55'35"N 004°47'02"E
EH407 52°55'43"N 004°41'29"E

TWR	120.125	De Kooy Tower
	234.800	
APP	132.025	RAPCON North
	337.000	
	124.225	De Kooy Arrival
	341.550	

MSA BASED ON HDR VOR / DME



DISTANCES IN NM
ALTITUDES IN FEET
DIRECTIONS ARE MAGNETIC

AVERAGE VAR 0° E (2010)

23.1 SPY 304.2 DME SPY 23.1 NM
VOR SPY RADIAL 304.2

— SID
— ATS ROUTE
- - - VOR RADIAL
- - - BEARING