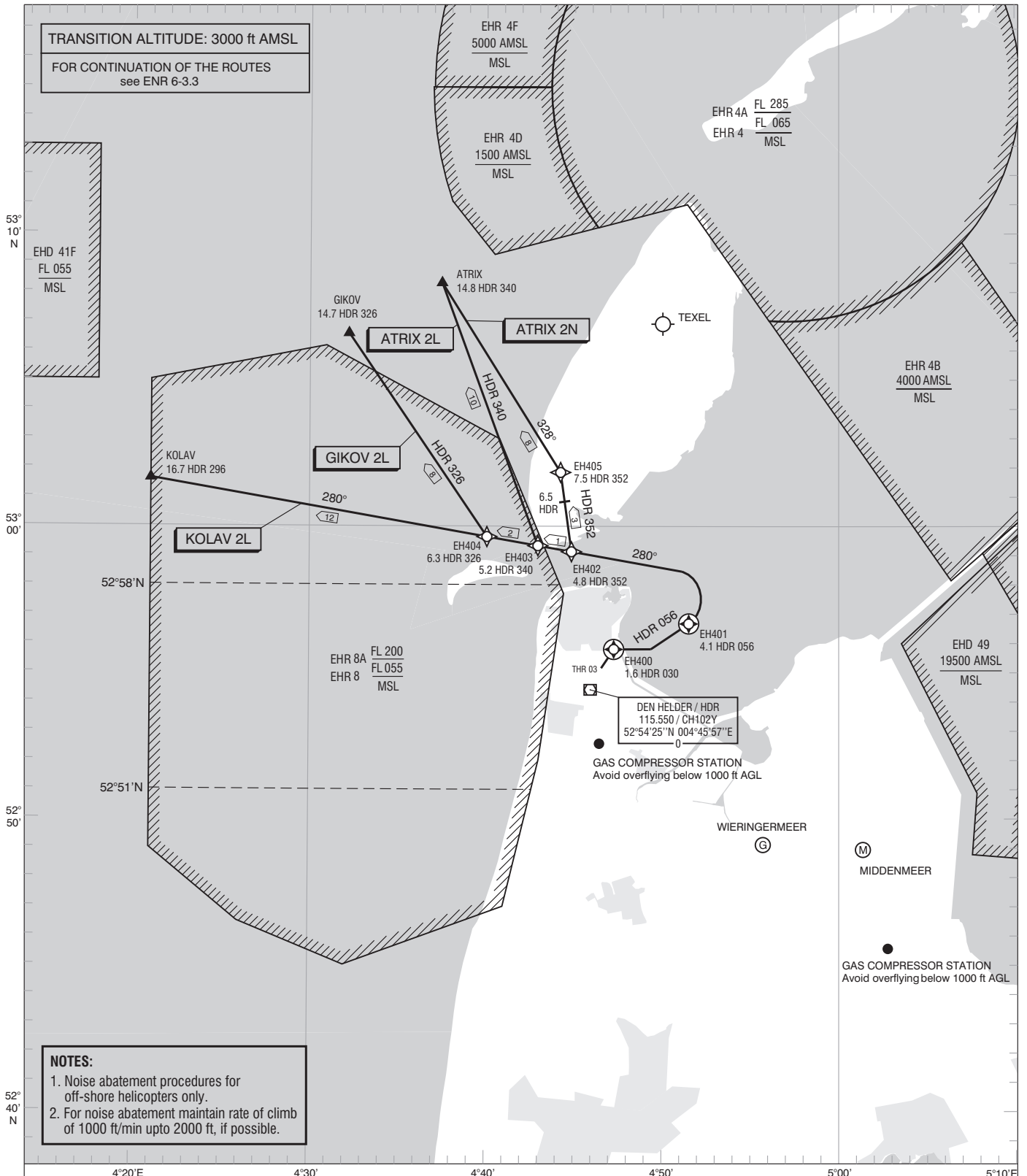
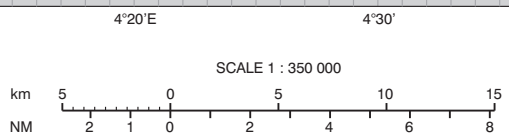


TRANSITION ALTITUDE: 3000 ft AMSL
FOR CONTINUATION OF THE ROUTES
see ENR 6-3.3

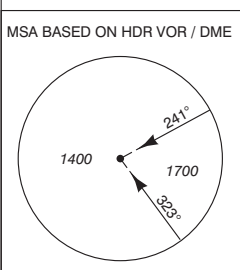


NOTES:
 1. Noise abatement procedures for off-shore helicopters only.
 2. For noise abatement maintain rate of climb of 1000 ft/min upto 2000 ft, if possible.



THR 03	52°55'14"N	004°46'39"E
EH400	52°55'48"N	004°47'16"E
EH401	52°56'40"N	004°51'31"E
EH402	52°59'08"N	004°44'52"E
EH403	52°59'20"N	004°42'57"E
EH404	52°59'38"N	004°40'04"E
EH405	53°01'50"N	004°44'14"E

TWR	120.125	De Kooy Tower
APP	132.025	RAPCON North
	337.000	
	124.225	De Kooy Arrival
	341.550	



DISTANCES IN NM
 ALTITUDES IN FEET
 DIRECTIONS ARE MAGNETIC
 AVERAGE VAR 0° E (2010)
 23.1 SPY 304.2 DME SPY 23.1 NM
 VOR SPY RADIAL 304.2
 ——— SID
 ——— ATS ROUTE
 - - - - - VOR RADIAL
 - - - - - BEARING