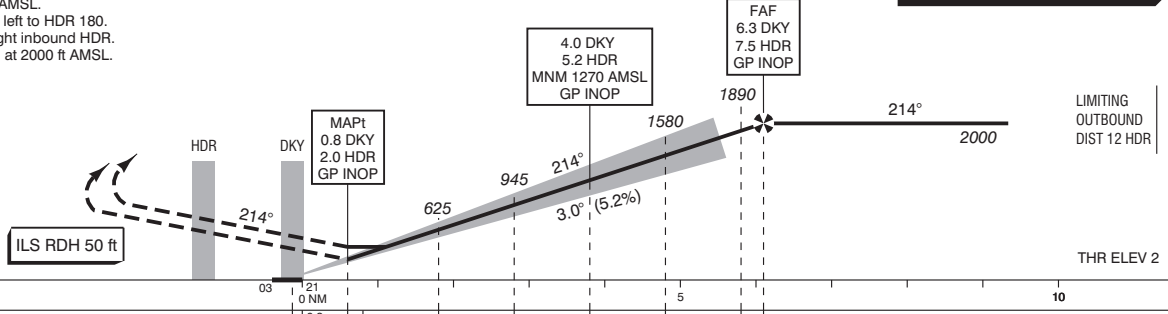


Missed approach
- At MAPt maintain final track 214° MAG and climb to 2000 ft AMSL.
- At 1000 ft AMSL turn left to HDR 180.
- At 3 HDR 180 turn right inbound HDR.
- Intercept the holding at 2000 ft AMSL.
- Inform ATC.

DO NOT DESCEND BELOW THE DESCENT PROFILE

TRANSITION LEVEL BY ATC
TRANSITION ALTITUDE 3000 ft AMSL



GS IN KT	60	80	100	120	140	160	
VERTICAL SPEED	320 ft/min	425 ft/min	530 ft/min	635 ft/min	745 ft/min	850 ft/min	
OCA (OCH) ELEV THR 21: 2 ft							
ACFT CAT	CAT I Press Alt	GP INOP MAPt: 0.8 DKY 2.0 HDR	CIRCLING*	* - Circling NW of RWY and extended RWY centreline prohibited. - Overflying the natural gas plant situated APRX 1000 m east of the RWY must be avoided.			
A	170 (168)	330 (328)	510 (506)				
B	177 (175)		550 (546)				
C							
D		NOT ALLOWED					
CEILING AND VISIBILITY MINIMA							
TAKE-OFF	DAY:	NA	NIGHT:	NA			
LANDING	DAY:	NA	NIGHT:	NA			

MSA BASED ON HDR VOR / DME

CHANGE: MSA, new WPT symbols and layout, editorial.