
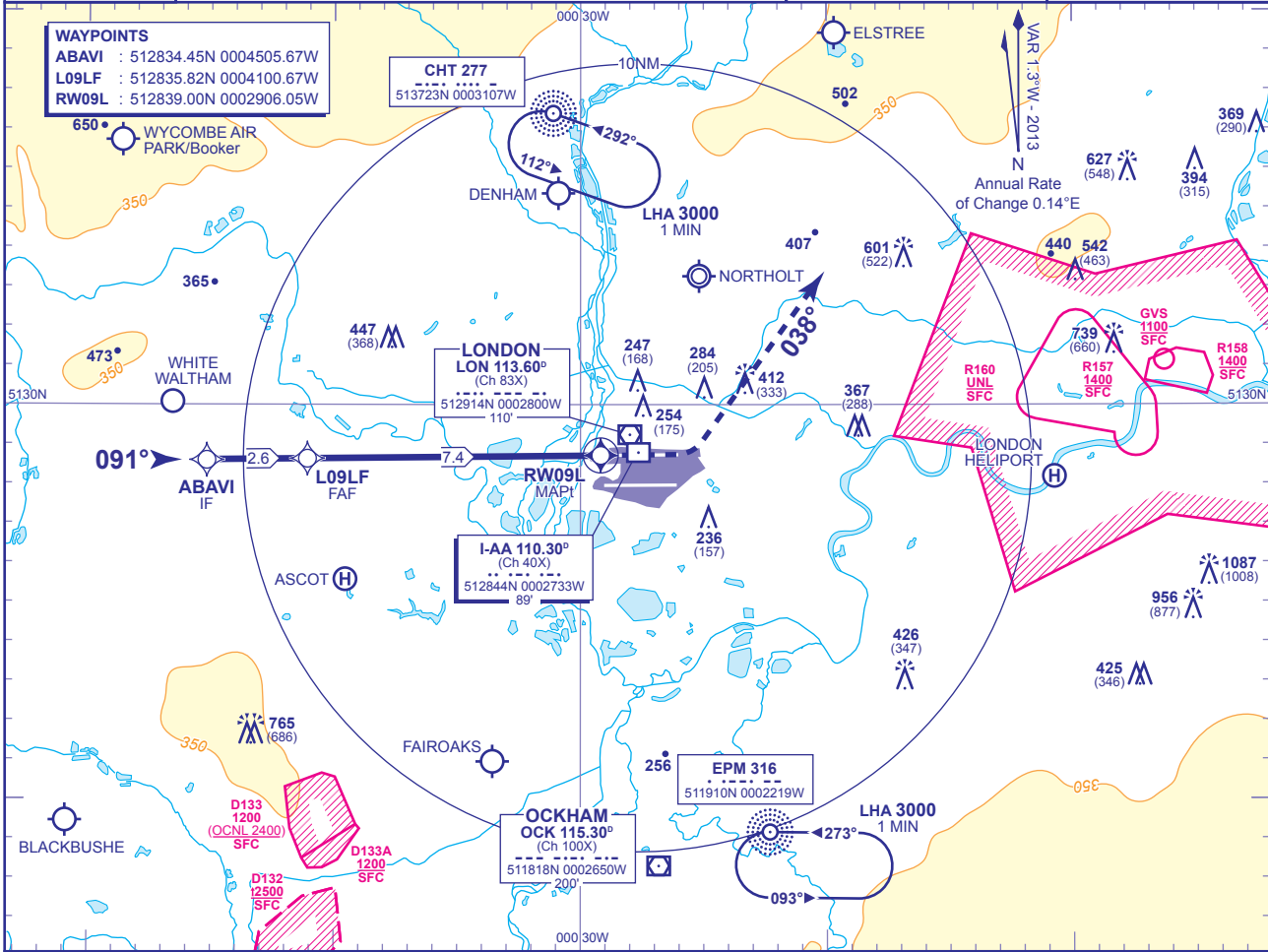


INSTRUMENT APPROACH CHART - ICAO

LONDON/HEATHROW

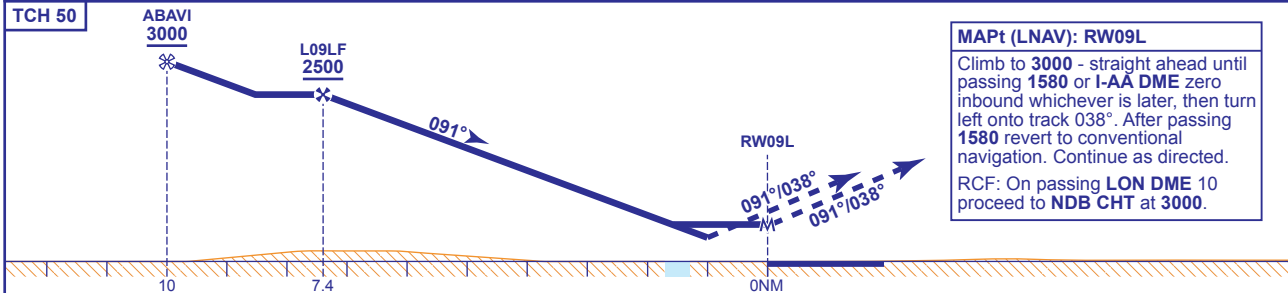
RNAV(GNSS)  
RWY 09L  
(ACFT CAT A,B,C,D)

 <p>MSA 25NM ARP</p>	APP 119.725, 120.400, 127.525, 134.975	HEATHROW DIRECTOR	AD ELEVATION	83
	TWR 118.500, 118.700, 124.475	HEATHROW TOWER	THR ELEVATION	79
	RAD 125.625, 127.525	HEATHROW RADAR	OBSTACLE ELEVATION	1087 AMSL (1008) (ABOVE THR)
	ATIS 128.075, 113.750, 115.100	HEATHROW INFORMATION	BEARINGS ARE MAGNETIC	MIN TEMP -10°C TRANSITION ALTITUDE 6000



RECOMMENDED PROFILE VERTICAL PATH ANGLE 3.0° (LNAV 5.24%), 318FT/NM

NM to RW09L	7	6	5	4	3	2
ALT(HGT)	2360(2281)	2040(1961)	1730(1651)	1410(1331)	1090(1011)	770(691)



**MAPT (LNAV): RW09L**  
Climb to 3000 - straight ahead until passing 1580 or I-AA DME zero inbound whichever is later, then turn left onto track 038°. After passing 1580 revert to conventional navigation. Continue as directed.  
RCF: On passing LON DME 10 proceed to NDB CHT at 3000.

Aircraft Category	A	B	C	D	Rate of descent	G/S KT	160	140	120	100	80
OCA (OCH)	LNAV/VNAV	570(491)	570(491)	570(491)	570(491)	FT/MIN	850	740	640	530	420
	LNAV	630(551)	630(551)	630(551)	630(551)						
VM(C)OCA (OCH AAL)	Total Area	750(667)	750(667)	850(767)	850(767)						

**NOTES**  
 1 Pilots should 'Request RNAV Approach' on first contact with Heathrow Director.  
 2 Aircraft will normally be radar vectored from the STAR Holding/Initial Approach Fixes.  
 3 Missed Approach Procedure uses conventional navigation aids and is not available without DME I-AA, DME LON and NDB CHT.

CHANGE (10/13): MAG VAR. CORRECTION TO PROFILE.

AERO INFO DATE 02 JUL 13