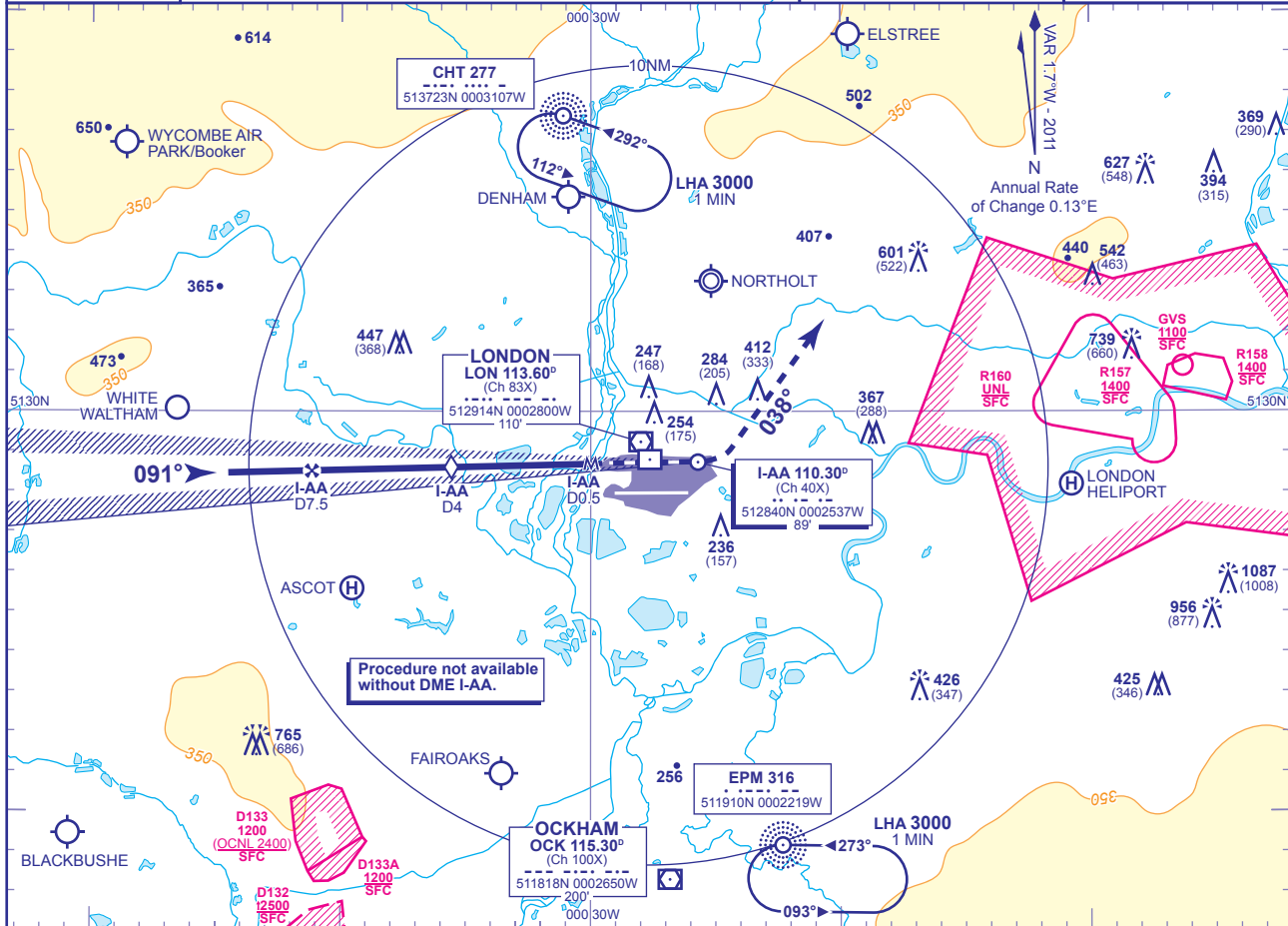


INSTRUMENT APPROACH CHART - ICAO

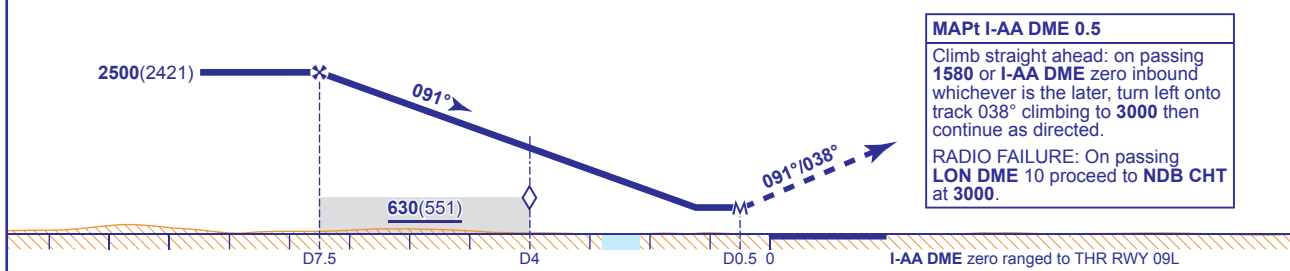
LONDON/HEATHROW
LOC/DME I-AA
RWY 09L
(ACFT CAT A,B,C,D)

<p>MSA 25NM LON VOR</p>	APP 119.725, 120.400, 127.525, 134.975	HEATHROW DIRECTOR	AD ELEVATION	83	TRANSITION ALTITUDE 6000
	TWR 118.500, 118.700, 124.475	HEATHROW TOWER	THR ELEVATION	79	
	RAD 125.625, 127.525	HEATHROW RADAR	OBSTACLE ELEVATION	1087 AMSL (1008) (ABOVE THR)	
	ATIS 128.075, 113.750, 115.100	HEATHROW INFORMATION	BEARINGS ARE MAGNETIC		



RECOMMENDED PROFILE Gradient 5.24%, 318FT/NM

DME I-AA	7	6	5	4 (SDF)	3	2
ALT(HGT)	2360(2281)	2040(1961)	1720(1641)	1400(1321)	1080(1001)	770(691)



Aircraft Category		A	B	C	D	Rate of descent	G/S KT	160	140	120	100	80
OCA (OCH)	Procedure	470(391)	470(391)	470(391)	470(391)		FT/MIN	850	740	640	530	420
VM(C)OCA (OCH AAL)	Total Area	750(667)	750(667)	850(767)	850(767)							

NOTES 1 Aircraft will normally be radar vectored from the STAR Holding/Initial Approach Fixes.
2 All pilots must follow and adhere to recommended profiles.

CHANGE: MAG VAR. BUR NDB REMOVED.

AERO INFO DATE 29 OCT 10