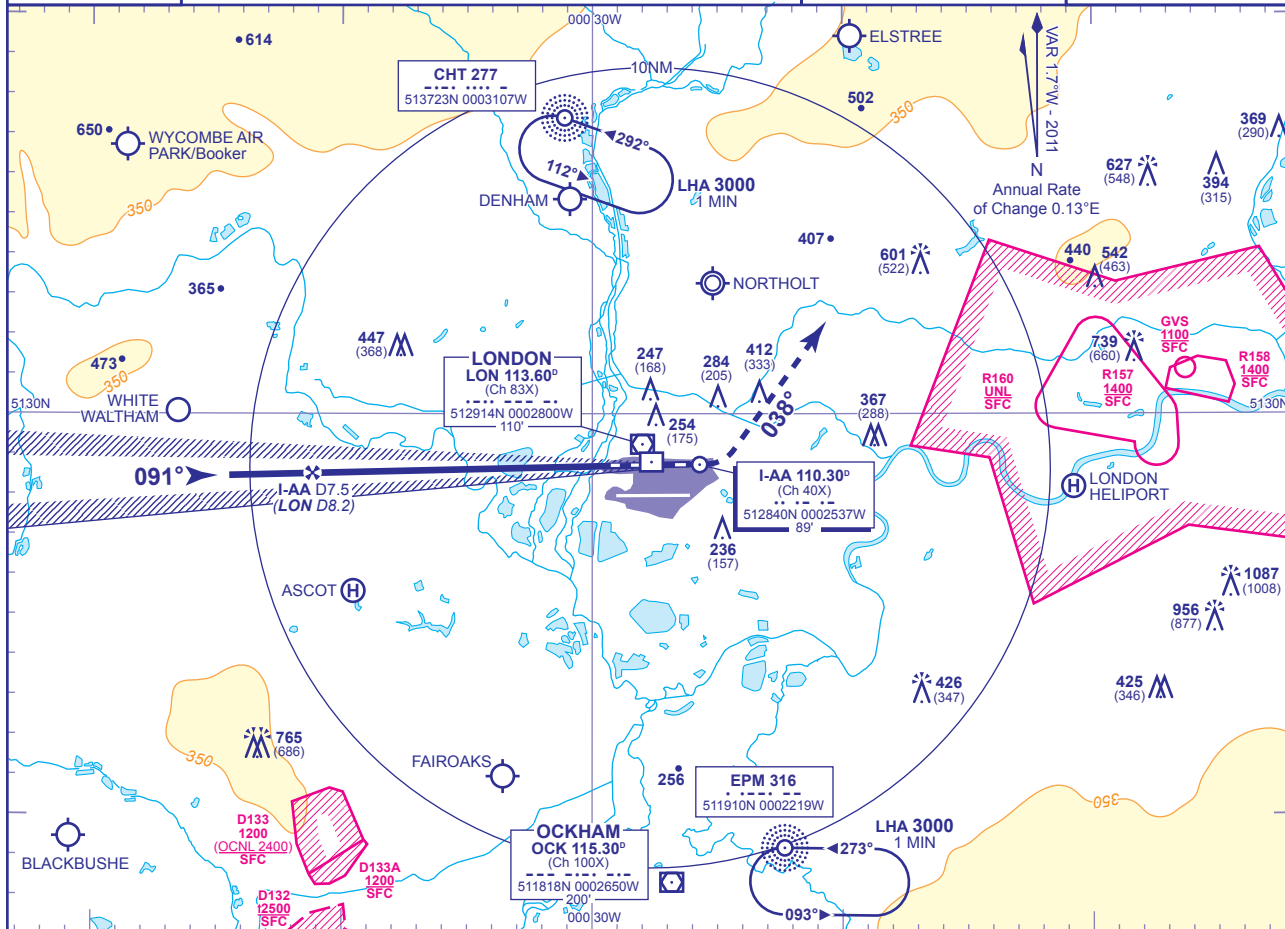


INSTRUMENT APPROACH CHART - ICAO

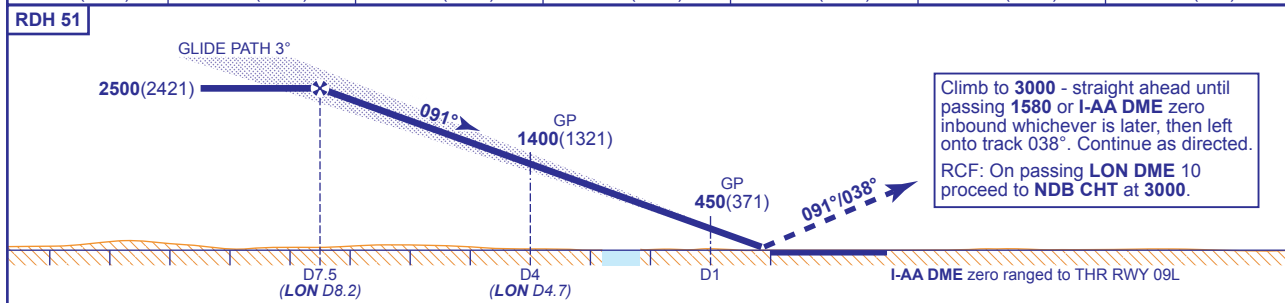
LONDON/HEATHROW
ILS/DME I-AA
RWY 09L
(ACFT CAT A,B,C,D)

	APP 119.725, 120.400, 127.525, 134.975	HEATHROW DIRECTOR	AD ELEVATION	83
	TWR 118.500, 118.700, 124.475	HEATHROW TOWER	THR ELEVATION	79
	RAD 125.625, 127.525	HEATHROW RADAR	OBSTACLE ELEVATION	1087 AMSL (1008) (ABOVE THR)
	ATIS 128.075, 113.750, 115.100	HEATHROW INFORMATION	BEARINGS ARE MAGNETIC	TRANSITION ALTITUDE



RECOMMENDED PROFILE GLIDE PATH 3.0°, 318FT/NM

DME I-AA	7	6	5	4	3	2
ALT(HGT)	2360(2281)	2040(1961)	1720(1641)	1400(1321)	1080(1001)	770(691)



Aircraft Category	Rate of descent				G/S KT					
	A	B	C	D	160	140	120	100	80	
OCA (OCH)	CAT I	221(142)	232(153)	243(164)	257(178)	850	740	640	530	420
	CAT II	134(55)	145(66)	158(79)	174(95)					
VM(C)OCA (OCH AAL)	Total Area	750(667)	750(667)	850(767)	850(767)					

AIRCRAFT UNABLE TO RECEIVE DME I-AA
Advise ATC. Equivalent radar ranges will be provided when established on the localiser approaching the nominal FAP and 4NM points.

- NOTES**
- Aircraft will normally be radar vectored from the STAR Holding/Initial Approach Fixes.
 - Ranging information is provided by ILS-dedicated DME facilities. DME values derived to the nearest 0.1NM from VOR DME LON are also provided for the FAP and 4NM check altitude/height.

CHANGE: MAG VAR. BUR NDB REMOVED.

AERO INFO DATE 29 OCT 10