

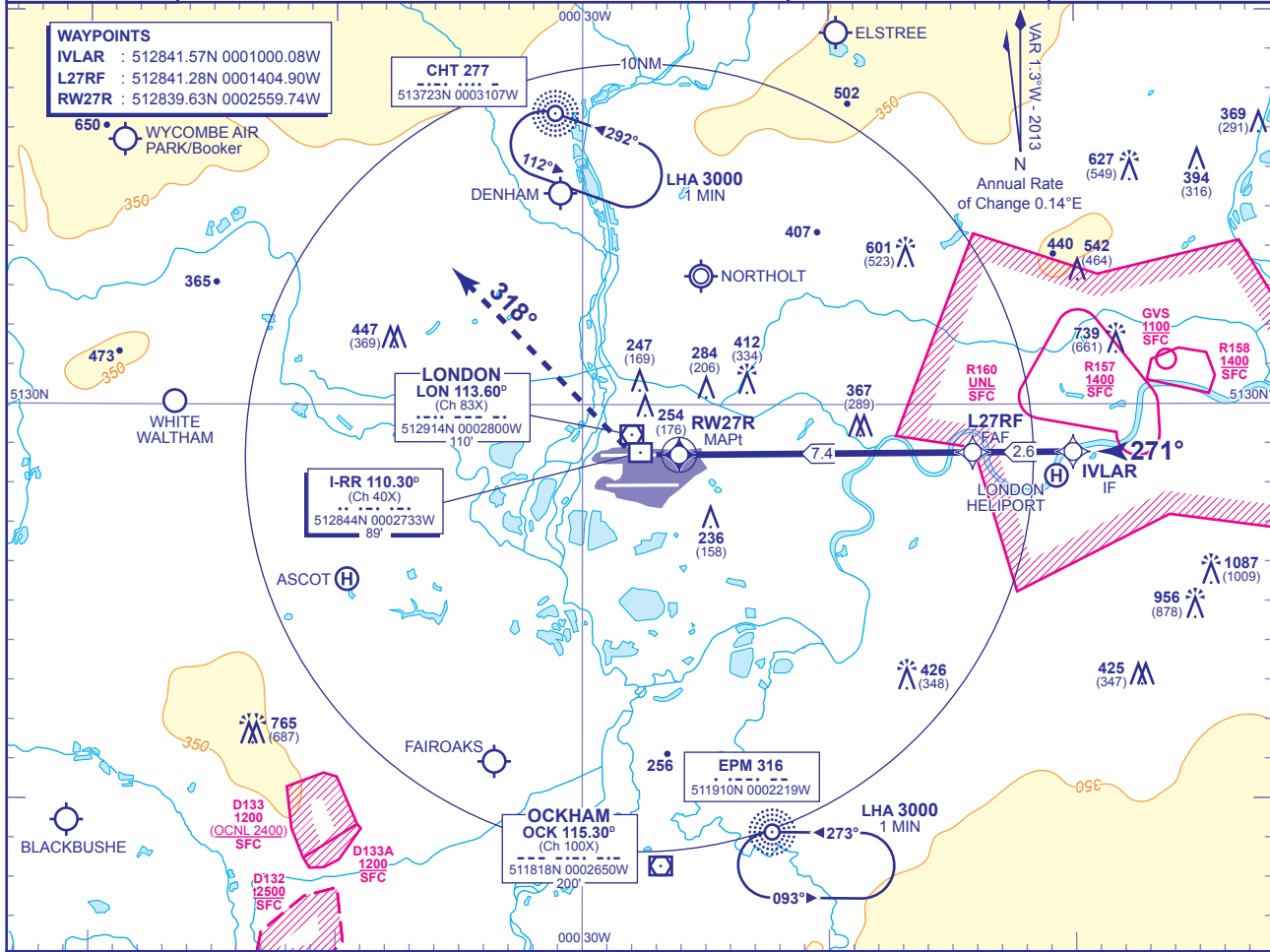
INSTRUMENT APPROACH CHART - ICAO

LONDON/HEATHROW

**RNAV(GNSS)
RWY 27R**

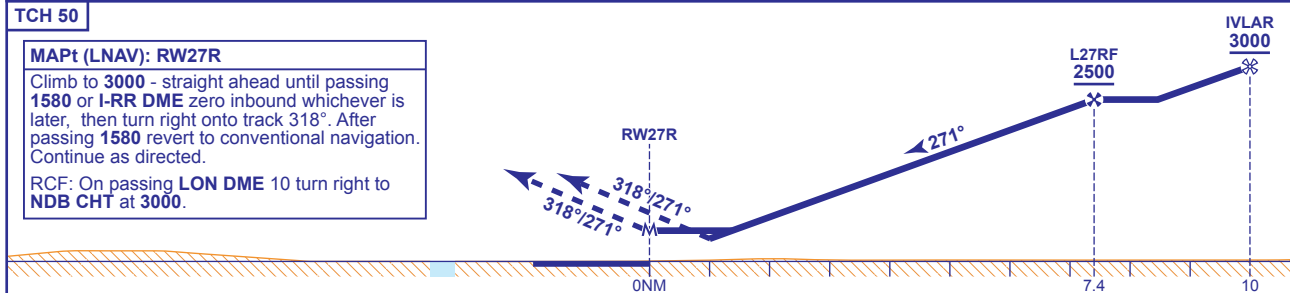
(ACFT CAT A,B,C,D)

<p>MSA 25NM ARP</p>	APP 119.725, 120.400, 127.525, 134.975	HEATHROW DIRECTOR	AD ELEVATION	83
	TWR 118.500, 118.700, 124.475	HEATHROW TOWER	THR ELEVATION	78
	RAD 125.625, 127.525	HEATHROW RADAR	OBSTACLE ELEVATION	1087 AMSL (1009) (ABOVE THR)
	ATIS 128.075, 113.750, 115.100	HEATHROW INFORMATION	BEARINGS ARE MAGNETIC	MIN TEMP -10°C
			TRANSITION ALTITUDE	6000



RECOMMENDED PROFILE VERTICAL PATH ANGLE 3.0° (LNAV 5.24%), 318FT/NM

NM to RW27R	7	6	5	4	3	2
ALT(HGT)	2360(2282)	2040(1962)	1730(1652)	1410(1332)	1090(1012)	770(692)



Aircraft Category		A	B	C	D	Rate of descent	G/S KT	160	140	120	100	80
OCA (OCH)	LNAV/VNAV	510(432)	510(432)	510(432)	510(432)		FT/MIN	850	740	640	530	420
	VM(C)OCA (OCH AAL)	Total Area	750(667)	750(667)	850(767)	850(767)						

- NOTES**
- 1 Pilots should 'Request RNAV Approach' on first contact with Heathrow Director.
 - 2 Aircraft will normally be radar vectored from the STAR Holding/Initial Approach Fixes.
 - 3 Pilots should not expect descent clearance below 4000 until 13NM from touchdown.
 - 4 Missed Approach Procedure uses conventional navigation aids and is not available without DME I-RR, DME LON and NDB CHT.

CHANGE (10/13): MAG VAR. CORRECTION TO PROFILE.

AERO INFO DATE 02 JUL 13