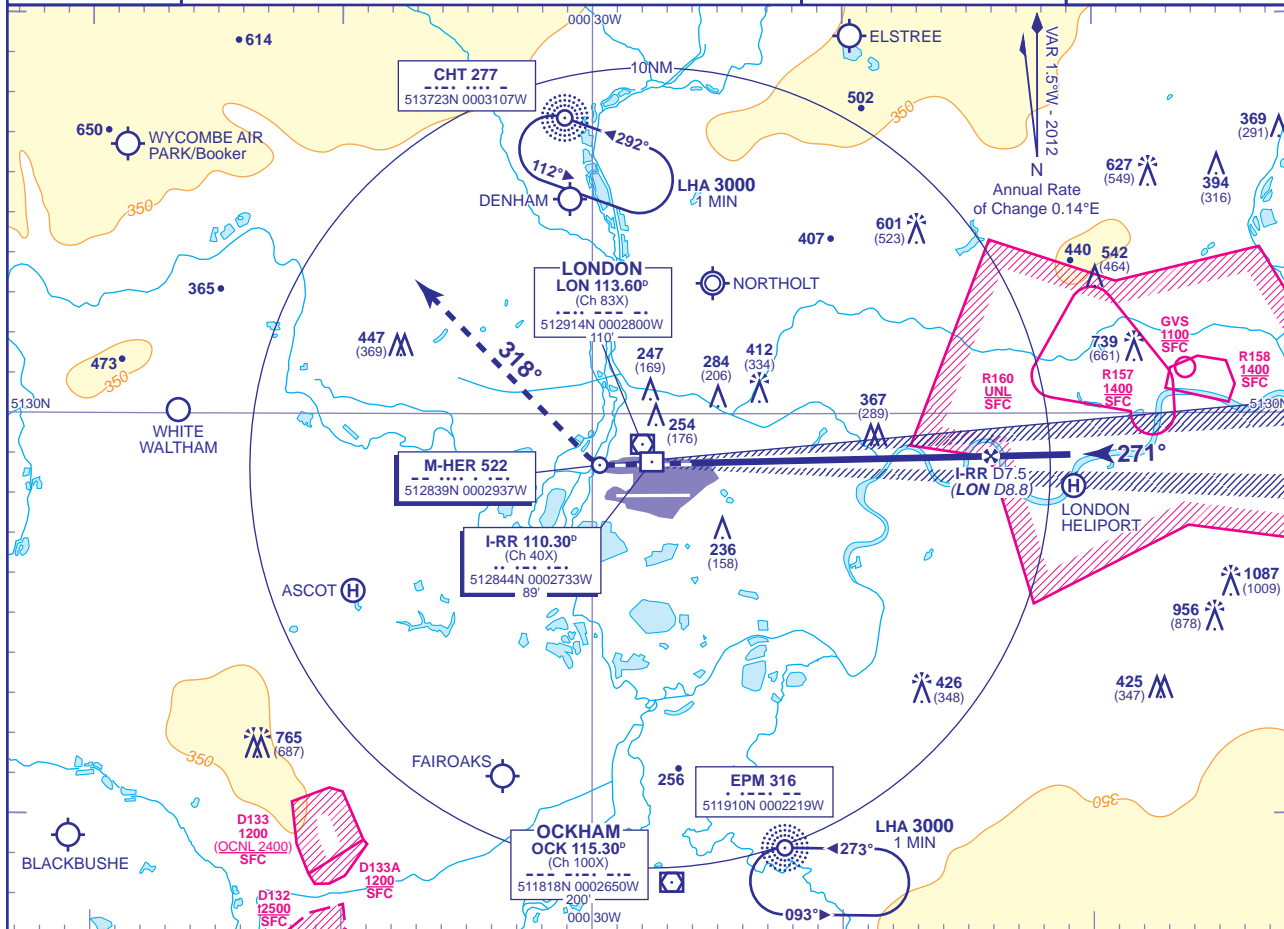


INSTRUMENT APPROACH CHART - ICAO

LONDON/HEATHROW

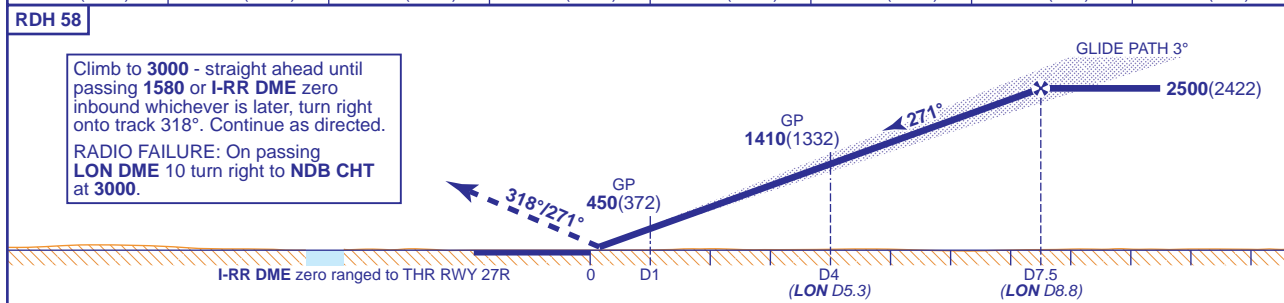
**MLS/M-HER
DME/I-RR
RWY 27R**
(ACFT CAT A,B,C,D)

	APP 119.725, 120.400, 127.525, 134.975	HEATHROW DIRECTOR	AD ELEVATION	83
	TWR 118.500, 118.700, 124.475	HEATHROW TOWER	THR ELEVATION	78
	RAD 125.625, 127.525	HEATHROW RADAR	OBSTACLE ELEVATION	1087 AMSL (1009) (ABOVE THR)
	ATIS 128.075, 113.750, 115.100	HEATHROW INFORMATION	BEARINGS ARE MAGNETIC	TRANSITION ALTITUDE 6000



RECOMMENDED PROFILE GLIDE PATH 3°, 318FT/NM

DME I-RR	7	6	5	4	3	2	1
ALT(HGT)	2370(2292)	2050(1972)	1730(1652)	1410(1332)	1090(1012)	770(692)	450(372)



Aircraft Category	A	B	C	D	Rate of descent	G/S KT	160	140	120	100	80
OCA (OCH)	CAT I	224(146)	234(156)	247(169)		262(184)	FT/MIN	850	740	640	530
CAT II	131(53)	141(63)	154(76)	168(90)							
VM(C)OCA (OCH AAL)	Total Area	750(667)	750(667)	850(767)	850(767)						

AIRCRAFT UNABLE TO RECEIVE DME I-RR
 Advise ATC. Equivalent radar ranges will be provided when established on the final approach track approaching the nominal FAP and 4NM points.

- NOTES**
- Aircraft will normally be radar vectored from the STAR Holding/Initial Approach Fixes.
 - Ranging information is provided by ILS-dedicated DME facilities. DME values derived to the nearest 0.1NM from VOR DME LON are also provided for the FAP and 4NM check altitudes/heights.
 - Pilots should 'Request Microwave Approach' on first contact with Heathrow Director.

CHANGE (8/12): MAG VAR. PAGE NUMBER. ANNUAL RATE OF CHANGE.

AERO INFO DATE 23 APR 12