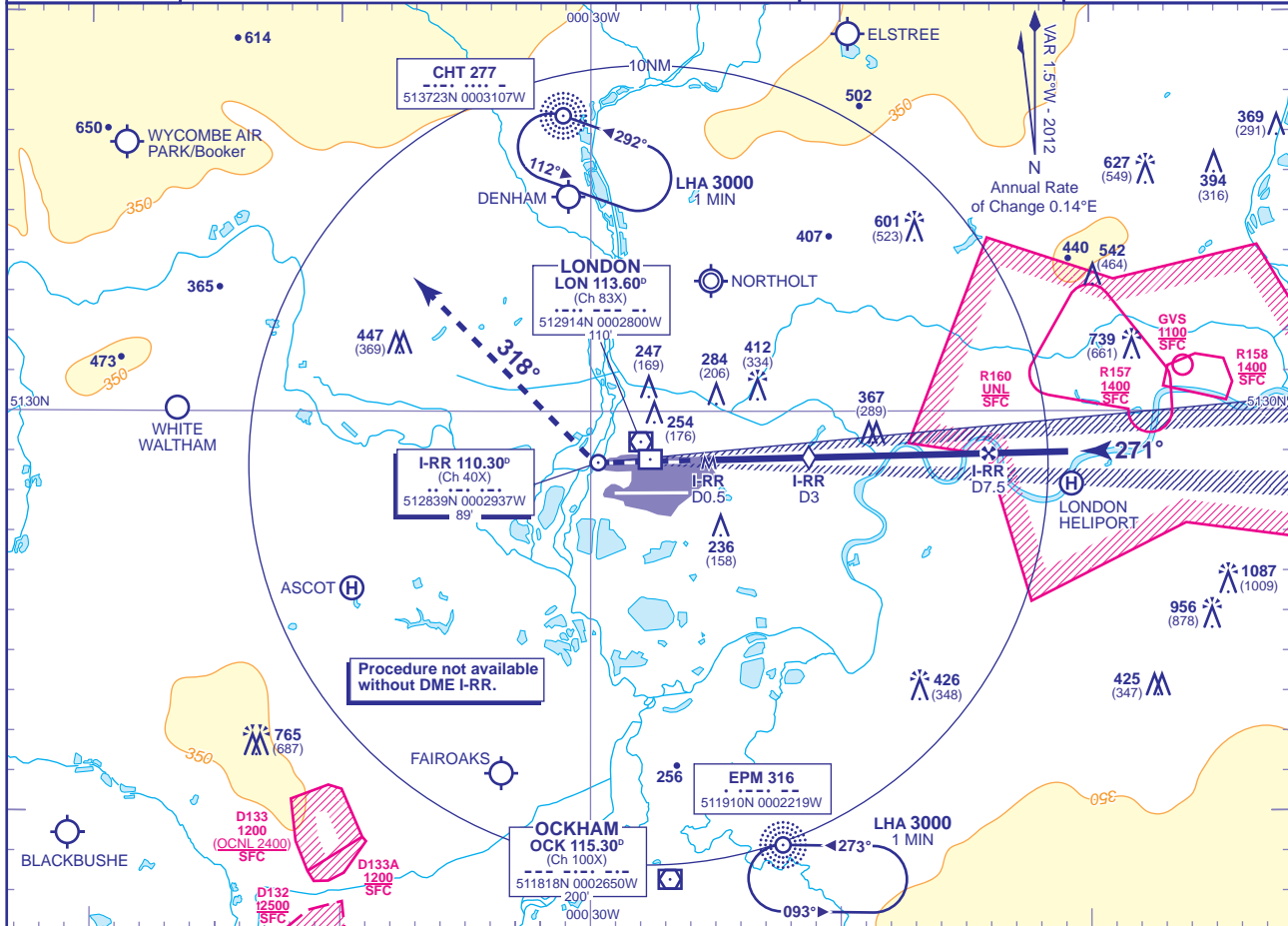


INSTRUMENT APPROACH CHART - ICAO

LONDON/HEATHROW  
LOC/DME I-RR  
RWY 27R  
(ACFT CAT A,B,C,D)

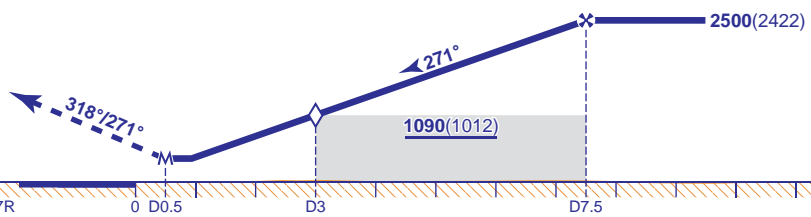
	APP 119.725, 120.400, 127.525, 134.975	HEATHROW DIRECTOR	AD ELEVATION	83
	TWR 118.500, 118.700, 124.475	HEATHROW TOWER	THR ELEVATION	78
	RAD 125.625, 127.525	HEATHROW RADAR	OBSTACLE ELEVATION	1087 AMSL (1009) (ABOVE THR)
	ATIS 128.075, 113.750, 115.100	HEATHROW INFORMATION	BEARINGS ARE MAGNETIC	TRANSITION ALTITUDE 6000



RECOMMENDED PROFILE Gradient 5.2%, 318FT/NM

DME I-RR	7	6	5	4	3 (SDF)	2	1
ALT(HGT)	2370(2292)	2050(1972)	1730(1652)	1410(1332)	1090(1012)	770(692)	450(372)

**MAPt I-RR DME 0.5**  
Climb to 3000 - straight ahead until passing 1580 or I-RR DME zero inbound whichever is later, turn right onto track 318°. Continue as directed.  
RADIO FAILURE: On passing LON DME 10 turn right to NDB CHT at 3000.



Aircraft Category	Procedure	A	B	C	D	Rate of descent	G/S KT	160	140	120	100	80
		OCA (OCH)	430(352)	430(352)	430(352)		430(352)	FT/MIN	850	740	640	530
VM(C)OCA (OCH AAL)	Total Area	750(667)	750(667)	850(767)	850(767)							

- NOTES 1 Aircraft will normally be radar vectored from the STAR Holding/Initial Approach Fixes.  
2 All pilots must follow and adhere to recommended profiles.

CHANGE (8/12): MAG VAR. PAGE NUMBER. ANNUAL RATE OF CHANGE.