

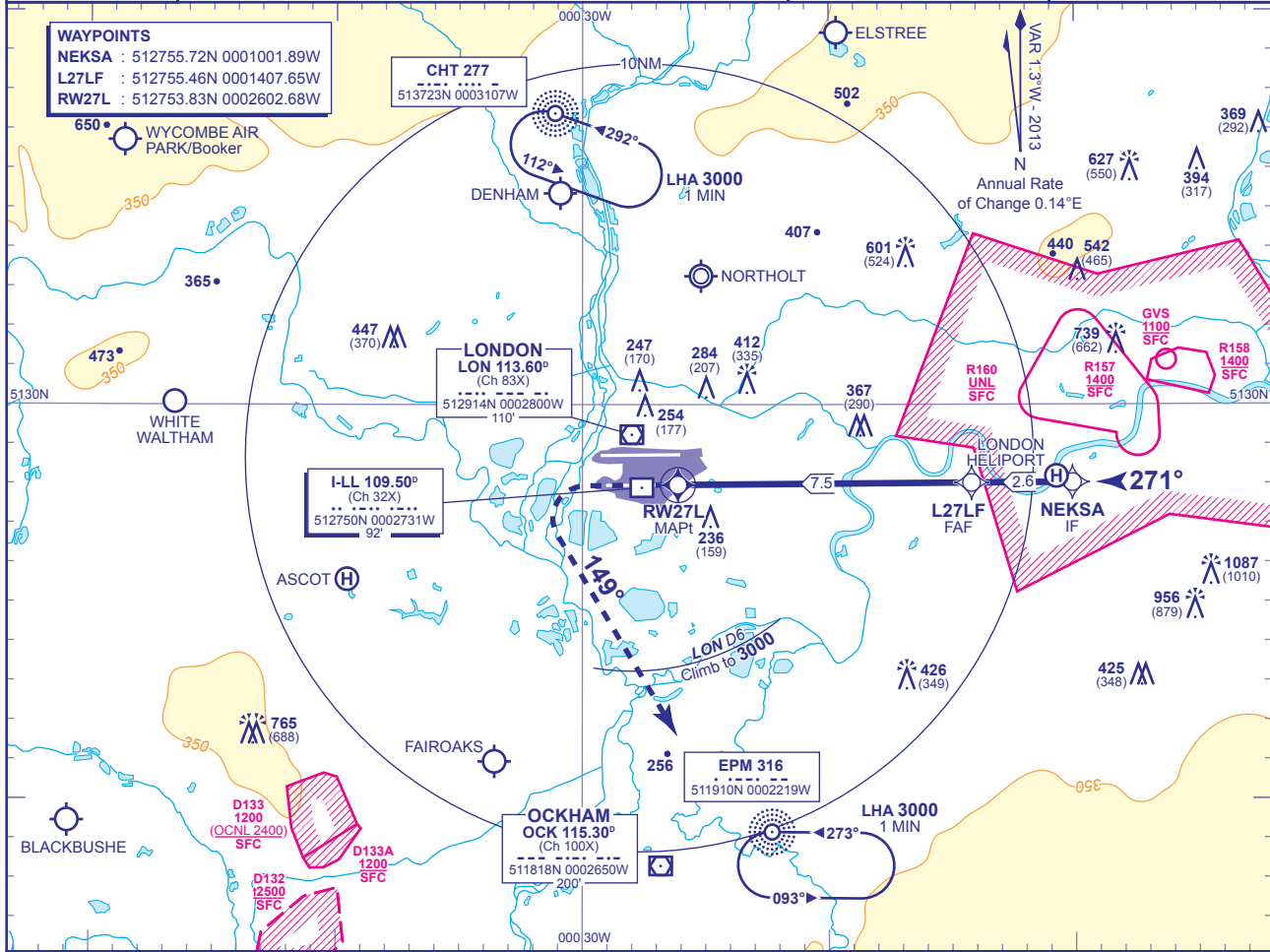
INSTRUMENT APPROACH CHART - ICAO

LONDON/HEATHROW

RNAV(GNSS)  
RWY 27L

(ACFT CAT A,B,C,D)

<p>MSA 25NM ARP</p>	APP 119.725, 120.400, 127.525, 134.975	HEATHROW DIRECTOR	AD ELEVATION	83	
	TWR 118.500, 118.700, 124.475	HEATHROW TOWER	THR ELEVATION	77	
	RAD 125.625, 127.525	HEATHROW RADAR	OBSTACLE ELEVATION	1087 AMSL (1010) (ABOVE THR)	
	ATIS 128.075, 113.750, 115.100	HEATHROW INFORMATION	BEARINGS ARE MAGNETIC	MIN TEMP -10°C	
				TRANSITION ALTITUDE	6000

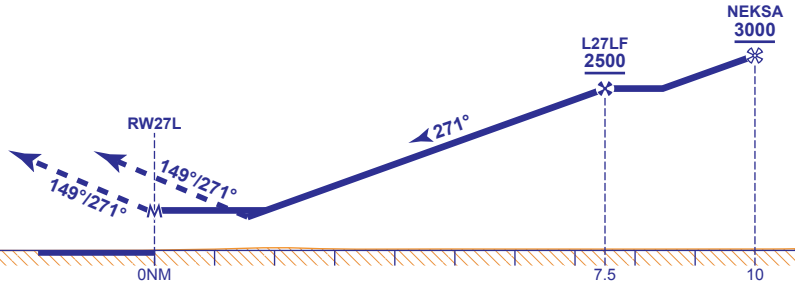


RECOMMENDED PROFILE VERTICAL PATH ANGLE 3.0° (LNAV 5.24%), 318FT/NM

NM to RW27L	7	6	5	4	3	2
ALT(HGT)	2360(2283)	2040(1963)	1720(1643)	1410(1333)	1090(1013)	770(693)

TCH 50

**MAPt (LNAV): RW27L**  
 Climb to 2000 - straight ahead until passing 1080 or I-LL DME zero inbound whichever is later, then turn left onto track 149°. After passing 1080 revert to conventional navigation. When established and passing LON DME 6 climb to 3000 without delay. Continue as directed.  
 RCF: On reaching 3000 proceed to NDB EPM at 3000.



Aircraft Category	OCA (OCH)	Aircraft Category				Rate of descent	G/S KT				
		A	B	C	D		160	140	120	100	80
VM(C)OCA (OCH AAL)	LNAV/VNAV	510(433)	510(433)	510(433)	510(433)	FT/MIN	850	740	640	530	420
	LNAV	560(483)	560(483)	560(483)	560(483)						
Total Area		750(667)	750(667)	850(767)	850(767)						

- NOTES**
- 1 Pilots should 'Request RNAV Approach' on first contact with Heathrow Director.
  - 2 Aircraft will normally be radar vectored from the STAR Holding/Initial Approach Fixes.
  - 3 Pilots should not expect descent clearance below 4000 until 13NM from touchdown.
  - 4 Missed Approach Procedure uses conventional navigation aids and is not available without DME I-LL, DME LON and NDB EPM.

CHANGE (10/13): MAG VAR. CORRECTION TO PROFILE.

AERO INFO DATE 02 JUL 13