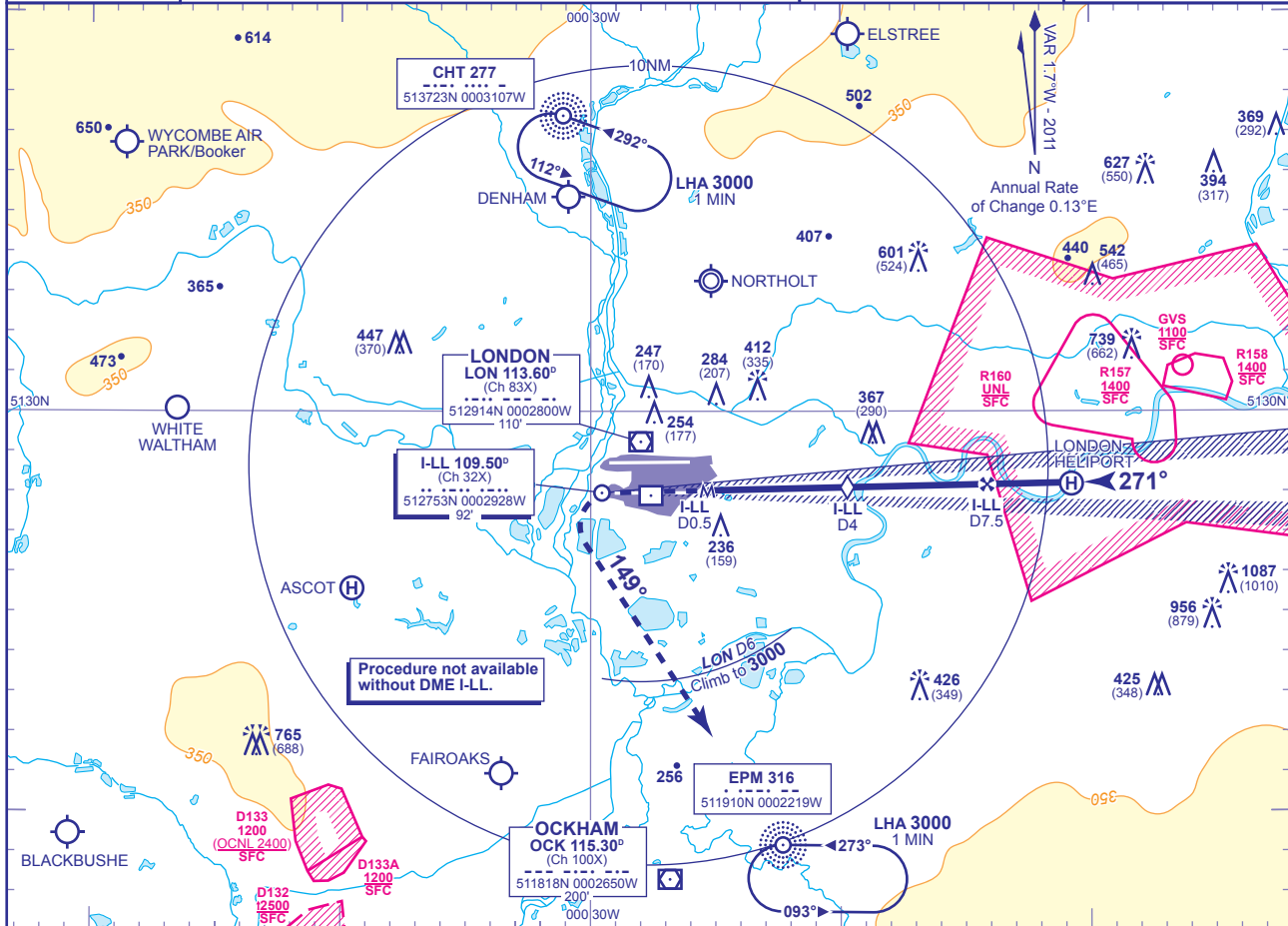


INSTRUMENT APPROACH CHART - ICAO

LONDON/HEATHROW
LOC/DME I-LL
RWY 27L
(ACFT CAT A,B,C,D)

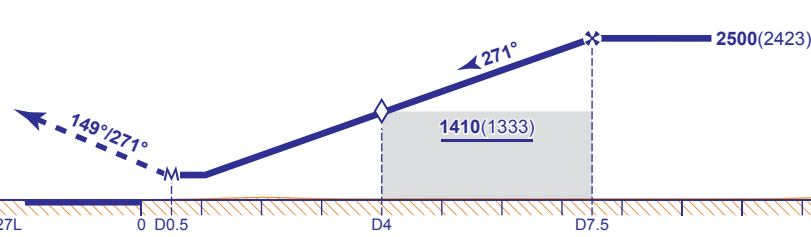
	APP 119.725, 120.400, 127.525, 134.975	HEATHROW DIRECTOR	AD ELEVATION	83
	TWR 118.500, 118.700, 124.475	HEATHROW TOWER	THR ELEVATION	77
	RAD 125.625, 127.525	HEATHROW RADAR	OBSTACLE ELEVATION	1087 AMSL (1010) (ABOVE THR)
	ATIS 128.075, 113.750, 115.100	HEATHROW INFORMATION	BEARINGS ARE MAGNETIC	TRANSITION ALTITUDE 6000



RECOMMENDED PROFILE Gradient 5.2%, 318FT/NM

DME I-LL	7	6	5	4 (SDF)	3	2
ALT(HGT)	2360(2283)	2040(1963)	1730(1653)	1410(1333)	1090(1013)	770(693)

MAPt I-LL DME 0.5
 Climb to 2000 - straight ahead until passing 1080 or I-LL DME zero inbound whichever is later, then left onto track 149°. When established and passing LON DME 6 climb to 3000 without delay. Continue as directed.
 RADIO FAILURE: On reaching 3000 proceed to NDB EPM at 3000.



Aircraft Category		A	B	C	D	Rate of descent	G/S KT				
Procedure		460(383)	460(383)	460(383)	460(383)		FT/MIN	160	140	120	100
VM(C)OCA (OCH AAL)	Total Area	750(667)	750(667)	850(767)	850(767)		850	740	640	530	420

NOTE Aircraft will normally be radar vectored from the STAR Holding/Initial Approach Fixes.

CHANGE: MAG VAR. BUR NDB REMOVED.

AERO INFO DATE 29 OCT 10