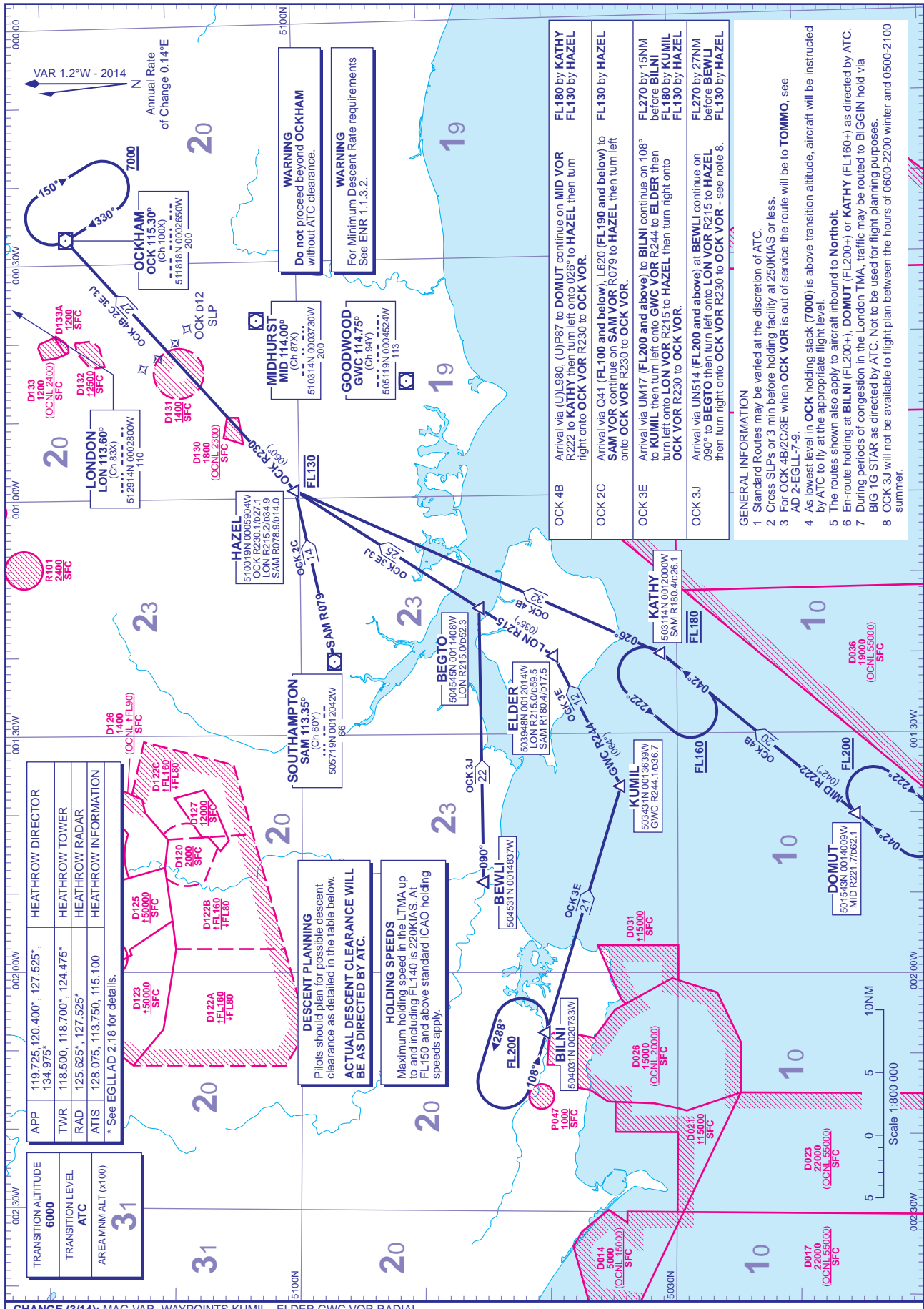


STANDARD ARRIVAL CHART - INSTRUMENT (STAR) - ICAO

DISTANCES IN NAUTICAL MILES
BEARINGS, TRACKS AND RADIALS ARE MAGNETIC
ALTITUDES AND ELEVATIONS ARE IN FEET

LONDON HEATHROW via OCKHAM (South-West)



APP	119.725, 120.400*, 127.525*, 134.975*	HEATHROW DIRECTOR
TWR	118.500, 118.700*, 124.475*	HEATHROW TOWER
RAD	125.625*, 127.525*	HEATHROW RADAR
ATIS	128.075, 113.750, 115.100	HEATHROW INFORMATION

* See EGLL AD 2.18 for details.

TRANSITION ALTITUDE	6000
TRANSITION LEVEL	ATC
AREAMIN/ALT (x100)	31

DESCENT PLANNING
Pilots should plan for possible descent clearance as detailed in the table below.
ACTUAL DESCENT CLEARANCE WILL BE AS DIRECTED BY ATC.

HOLDING SPEEDS
Maximum holding speed in the LTMA up to and including FL140 is 220KIAS. At FL150 and above standard ICAO holding speeds apply.

- OCK 4B** Arrival via (UL)980, (U)P87 to **DOMUT** continue on **MID VOR** R222 to **KATHY** then turn left onto 026° to **HAZEL** then turn right onto **OCK VOR** R230 to **OCK VOR**.
FL180 by KATHY
FL130 by HAZEL
- OCK 2C** Arrival via Q41 (FL100 and below), L620 (FL190 and below) to **SAMI VOR** continue on **SAMI VOR** R079 to **HAZEL**, then turn left onto **OCK VOR** R230 to **OCK VOR**.
FL130 by HAZEL
- OCK 3E** Arrival via UM17 (FL200 and above) to **BILNI** continue on 108° before **BILNI** then turn left onto **LOK R240** then turn right onto **LOK VOR** R215 to **HAZEL** then turn right onto **OCK VOR** R230 to **OCK VOR**.
FL270 by 15NM before BILNI
FL180 by KUMIL
FL130 by HAZEL
- OCK 3J** Arrival via UN514 (FL200 and above) at **BEWLI** continue on 090° to **BEGTO** then turn left onto **LOK VOR** R215 to **HAZEL** then turn right onto **OCK VOR** R230 to **OCK VOR** - see note 8.
FL270 by 27NM before BEWLI
FL130 by HAZEL

- GENERAL INFORMATION**
- Standard Routes may be varied at the discretion of ATC.
 - Cross SLP's or 3 min before holding facility at 250KIAS or less.
 - For OCK 4B/2C/3E when **OCK VOR** is out of service the route will be to **TOMMO**, see AD 2-EGLL-7-9.
 - As lowest level in **OCK** holding stack (7000) is above transition altitude, aircraft will be instructed by ATC to fly at the appropriate flight level.
 - The routes shown also apply to aircraft inbound to **Northolt**.
 - En-route holding at **BILNI** (FL200+), **DOMUT** (FL200+) or **KATHY** (FL160+) as directed by ATC.
 - During periods of congestion in the London TMA, traffic may be routed to **BIGGIN** hold via **BIG 1G STAR** as directed by ATC. Not to be used for flight planning purposes.
 - OCK 3J** will not be available to flight plan between the hours of 0600-2200 winter and 0500-2100 summer.

CHANGE (3/14): MAG VAR. WAYPOINTS KUMIL - ELDER GWC VOR RADIAL.
AERO INFO DATE 10 DEC 13