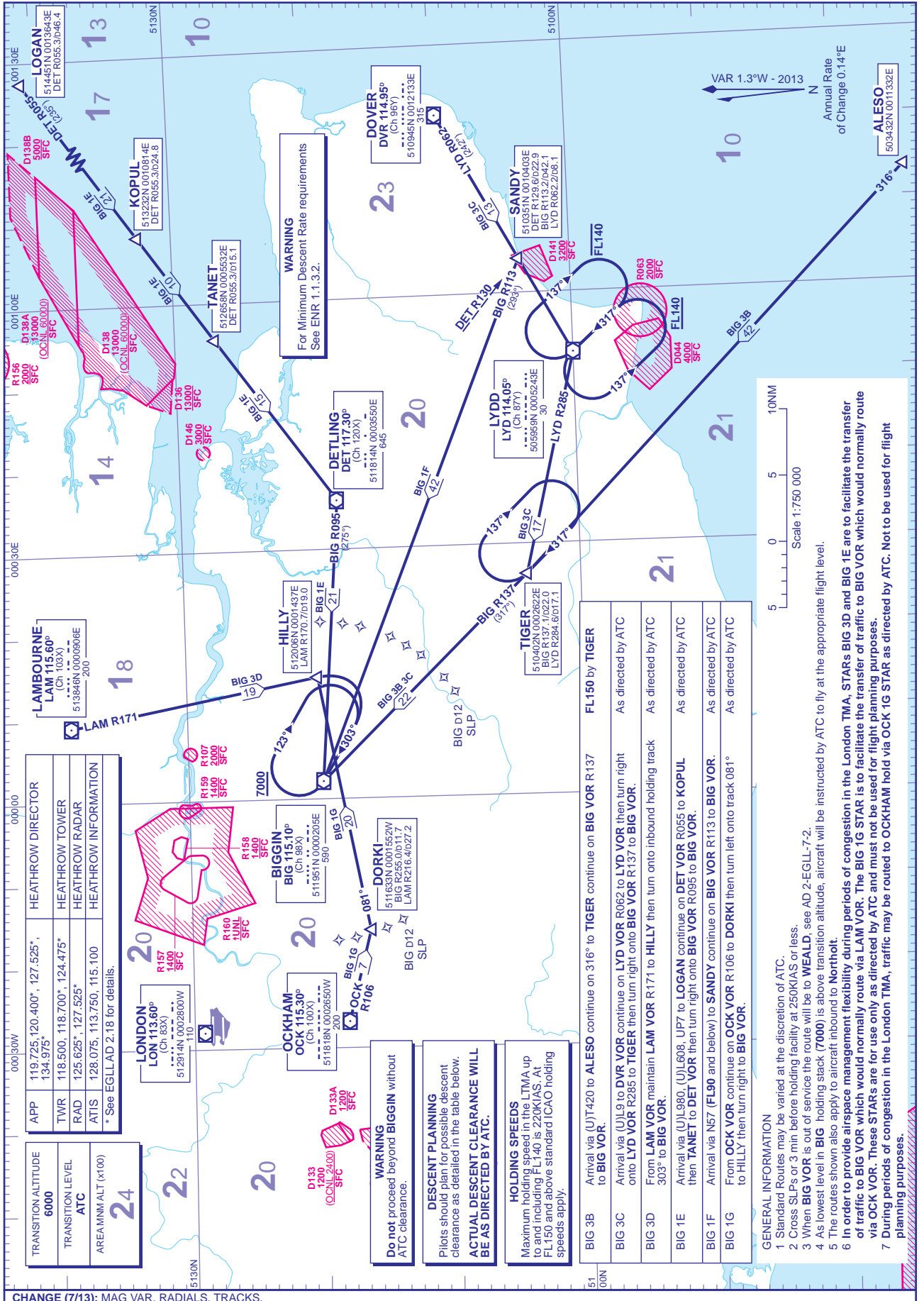


STANDARD ARRIVAL CHART - INSTRUMENT (STAR) - ICAO

DISTANCES IN NAUTICAL MILES
BEARINGS, TRACKS AND RADIALS ARE MAGNETIC
ALTITUDES AND ELEVATIONS ARE IN FEET

LONDON HEATHROW via BIGGIN



CHANGE (7/13): MAG VAR. RADIALS. TRACKS.

AERO INFO DATE 5 APR 13

TRANSITION ALTITUDE	6000
TRANSITION LEVEL	ATC
AREAMNALT (x100)	24
APP	119.725, 120.400*, 127.525*, 134.975
TWR	118.500, 118.700*, 124.475*
RAD	125.625*, 127.525*
ATIS	128.075, 113.750, 115.100
AREAMNALT (x100)	24
* See EGLL AD 2.18 for details.	

HEATHROW DIRECTOR	119.725, 120.400*, 127.525*, 134.975
HEATHROW TOWER	118.500, 118.700*, 124.475*
HEATHROW RADAR	125.625*, 127.525*
HEATHROW INFORMATION	128.075, 113.750, 115.100

LONDON LON 113.60° (Ch 83X) 512914N 000200W 110	LONDON LON 115.60° (Ch 105X) 513846N 000090E 200
OCKHAM OCK 115.30° (Ch 100X) 511819N 000265W 200	BIGGIN BIG 115.10° (Ch 98X) 511851N 000265E 590
DORKI DOR 115.10° (Ch 98X) 511633N 000155W LAM R216.40DZ7.2	HILLY HIL 115.60° (Ch 105X) 512006N 000143E LAM R170.70D19.0

HEATHROW DIRECTOR	119.725, 120.400*, 127.525*, 134.975
HEATHROW TOWER	118.500, 118.700*, 124.475*
HEATHROW RADAR	125.625*, 127.525*
HEATHROW INFORMATION	128.075, 113.750, 115.100

HEATHROW DIRECTOR	119.725, 120.400*, 127.525*, 134.975
HEATHROW TOWER	118.500, 118.700*, 124.475*
HEATHROW RADAR	125.625*, 127.525*
HEATHROW INFORMATION	128.075, 113.750, 115.100

HEATHROW DIRECTOR	119.725, 120.400*, 127.525*, 134.975
HEATHROW TOWER	118.500, 118.700*, 124.475*
HEATHROW RADAR	125.625*, 127.525*
HEATHROW INFORMATION	128.075, 113.750, 115.100

HEATHROW DIRECTOR	119.725, 120.400*, 127.525*, 134.975
HEATHROW TOWER	118.500, 118.700*, 124.475*
HEATHROW RADAR	125.625*, 127.525*
HEATHROW INFORMATION	128.075, 113.750, 115.100

HEATHROW DIRECTOR	119.725, 120.400*, 127.525*, 134.975
HEATHROW TOWER	118.500, 118.700*, 124.475*
HEATHROW RADAR	125.625*, 127.525*
HEATHROW INFORMATION	128.075, 113.750, 115.100

HEATHROW DIRECTOR	119.725, 120.400*, 127.525*, 134.975
HEATHROW TOWER	118.500, 118.700*, 124.475*
HEATHROW RADAR	125.625*, 127.525*
HEATHROW INFORMATION	128.075, 113.750, 115.100

HEATHROW DIRECTOR	119.725, 120.400*, 127.525*, 134.975
HEATHROW TOWER	118.500, 118.700*, 124.475*
HEATHROW RADAR	125.625*, 127.525*
HEATHROW INFORMATION	128.075, 113.750, 115.100

WARNING
Do not proceed beyond BIGGIN without ATC clearance.

DESCENT PLANNING
Pilots should plan for possible descent clearance as detailed in the table below.
ACTUAL DESCENT CLEARANCE WILL BE AS DIRECTED BY ATC.

HOLDING SPEEDS
Maximum holding speed in the LTMA up to and including FL140 is 220KIAS. At FL150 and above standard ICAO holding speeds apply.

BIG 3B	Arrival via (UJT420 to ALESO continue on 316° to TIGER continue on BIG VOR R137 to BIG VOR.
BIG 3C	Arrival via (UJL9 to DVOR VOR continue on LYD VOR R062 to LYD VOR then turn right onto LYD VOR R285 to TIGER then turn right onto BIG VOR R137 to BIG VOR.
BIG 3D	From LAM VOR maintain LAM VOR R171 to HILLY then turn onto inbound holding track 303° to BIG VOR.
BIG 1E	Arrival via (UJL980, UJL608, UJL7 to LOGAN continue on DET VOR R055 to KOPUL then TANET to DET VOR then turn right onto BIG VOR R095 to BIG VOR.
BIG 1F	Arrival via N67 (FL90 and below) to SANDY continue on BIG VOR R113 to BIG VOR.
BIG 1G	From OCK VOR continue on OCK VOR R106 to DORKI then turn left onto track 081° to HILLY then turn right to BIG VOR.

GENERAL INFORMATION

- Standard Routes may be varied at the discretion of ATC.
- Cross SLPs or 3 min before holding facility at 250KIAS or less.
- When BIG VOR is out of service the route will be to WEALD, see AD 2-EGLL-7-2.
- As lowest level in BIG holding stack (7000) is above transition altitude, aircraft will be instructed by ATC to fly at the appropriate flight level.
- The routes shown also apply to aircraft inbound to Northolt.
- In order to provide airspace management flexibility during periods of congestion in the London TMA, STARS BIG 3D and BIG 1E are to facilitate the transfer of traffic to BIG VOR which would normally route via LAM VOR. The BIG 1G STAR is to facilitate the transfer of traffic to BIG VOR which would normally route via OCK VOR. These STARS are for use only as directed by ATC and must not be used for flight planning purposes.
- During periods of congestion in the London TMA, traffic may be routed to OCKHAM hold via OCK 1G STAR as directed by ATC. Not to be used for flight planning purposes.