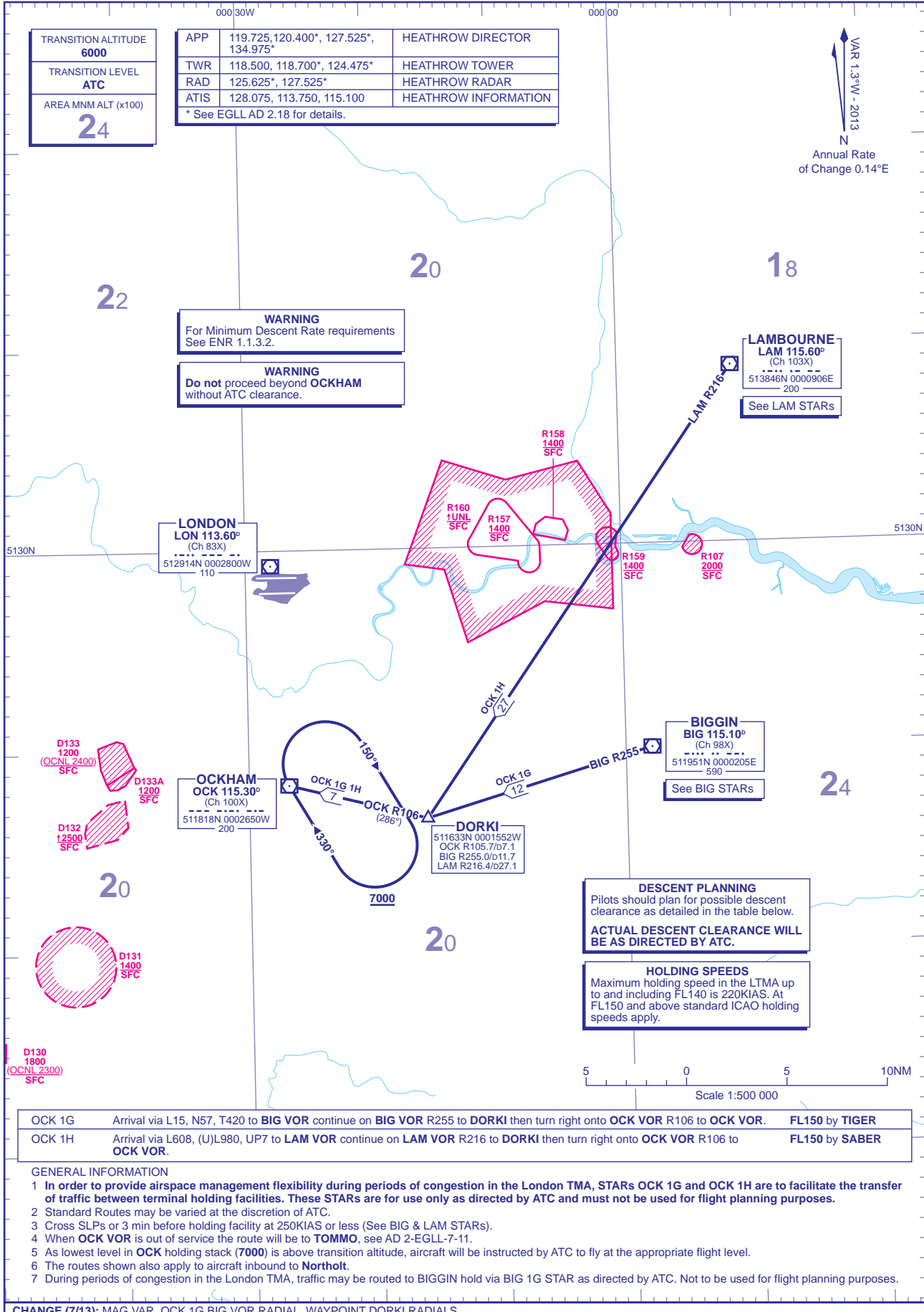


STANDARD ARRIVAL CHART - INSTRUMENT (STAR) - ICAO

DISTANCES IN NAUTICAL MILES
BEARINGS, TRACKS AND RADIALS ARE MAGNETIC
ALTITUDES AND ELEVATIONS ARE IN FEET

LONDON HEATHROW via OCKHAM (east)



TRANSITION ALTITUDE 6000
TRANSITION LEVEL ATC
AREA MNM ALT (x100) 24

APP	119.725, 120.400*, 127.525*, 134.975*	HEATHROW DIRECTOR
TWR	118.500, 118.700*, 124.475*	HEATHROW TOWER
RAD	125.625*, 127.525*	HEATHROW RADAR
ATIS	128.075, 113.750, 115.100	HEATHROW INFORMATION

* See EGLL AD 2.18 for details.

VAR 1.3°W - 2013
N
Annual Rate of Change 0.14°E

WARNING
For Minimum Descent Rate requirements
See ENR 1.1.3.2.

WARNING
Do not proceed beyond OCKHAM
without ATC clearance.

LAMBOURNE
LAM 115.60°
(Ch 103X)
513846N 0000906E
- 200
See LAM STARs

LONDON
LON 113.60°
(Ch 83X)
512914N 0002800W
- 110

BIGGIN
BIG 115.10°
(Ch 98X)
511951N 0000205E
- 590
See BIG STARs

OCKHAM
OCK 115.30°
(Ch 100X)
511818N 0002650W
- 200

DORKI
511633N 0001552W
OCK R105.7/d7.1
BIG R255.0/d11.7
LAM R216.4/d27.1

DESCENT PLANNING
Pilots should plan for possible descent clearance as detailed in the table below.
ACTUAL DESCENT CLEARANCE WILL BE AS DIRECTED BY ATC.

HOLDING SPEEDS
Maximum holding speed in the LTMA up to and including FL140 is 220KIAS. At FL150 and above standard ICAO holding speeds apply.

OCK 1G	Arrival via L15, N57, T420 to BIG VOR continue on BIG VOR R255 to DORKI then turn right onto OCK VOR R106 to OCK VOR .	FL150 by TIGER
OCK 1H	Arrival via L608, (U)L980, UP7 to LAM VOR continue on LAM VOR R216 to DORKI then turn right onto OCK VOR R106 to OCK VOR .	FL150 by SABER

GENERAL INFORMATION

- In order to provide airspace management flexibility during periods of congestion in the London TMA, STARs OCK 1G and OCK 1H are to facilitate the transfer of traffic between terminal holding facilities. These STARs are for use only as directed by ATC and must not be used for flight planning purposes.
- Standard Routes may be varied at the discretion of ATC.
- Cross SLPs or 3 min before holding facility at 250KIAS or less (See BIG & LAM STARs).
- When **OCK VOR** is out of service the route will be to **TOMMO**, see AD 2-EGLL-7-11.
- As lowest level in **OCK** holding stack (**7000**) is above transition altitude, aircraft will be instructed by ATC to fly at the appropriate flight level.
- The routes shown also apply to aircraft inbound to **Northolt**.
- During periods of congestion in the London TMA, traffic may be routed to **BIGGIN** hold via **BIG 1G** STAR as directed by ATC. Not to be used for flight planning purposes.

CHANGE (7/13): MAG VAR. OCK 1G BIG VOR RADIAL. WAYPOINT DORKI RADIALS.