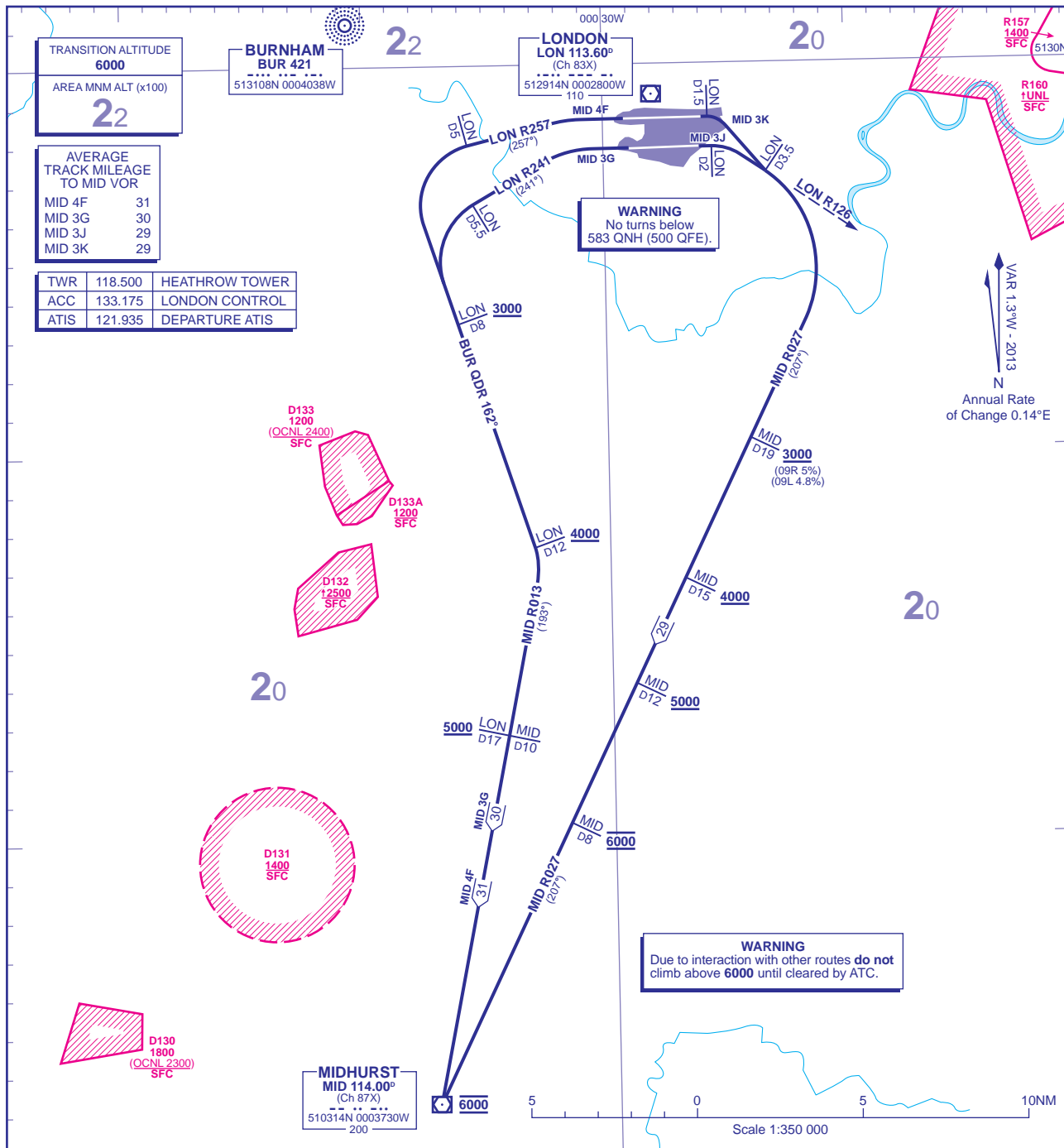


STANDARD DEPARTURE CHART - INSTRUMENT (SID) - ICAO

DISTANCES IN NAUTICAL MILES
BEARINGS, TRACKS AND RADIALS ARE MAGNETIC
ALTITUDES AND ELEVATIONS ARE IN FEET

**LONDON HEATHROW
MIDHURST 4F 3G 3J 3K**



- GENERAL INFORMATION**
- SIDs reflect Noise Preferential Routeings. See EGLL AD 2.21 for Noise Abatement Procedures.
 - Cross Noise Monitoring Points not below 1083 QNH (1000 QFE) thereafter maintain minimum 4% climb gradient to 4000 (Note climb gradients greater than 4% may be required for ATC and airspace purposes) to comply with Noise Abatement requirements.
 - Callsign for RTF frequency used when instructed after take-off 'London Control'. Report callsign, SID designator, current altitude and cleared altitude on first contact with 'London Control'.
 - En-route cruising level will be issued after take-off by 'London Control'. Do not climb above SID levels until instructed by ATC.
 - Maximum 250KIAS below FL100 unless otherwise authorised.
 - Aircraft operators who are unable to conform to the published climb gradients and/SID altitudes are required to inform ATC prior to departure.

CHANGE (7/13): MAG VAR. RADIALS. TRACKS.

AERO INFO DATE 28 MAR 13