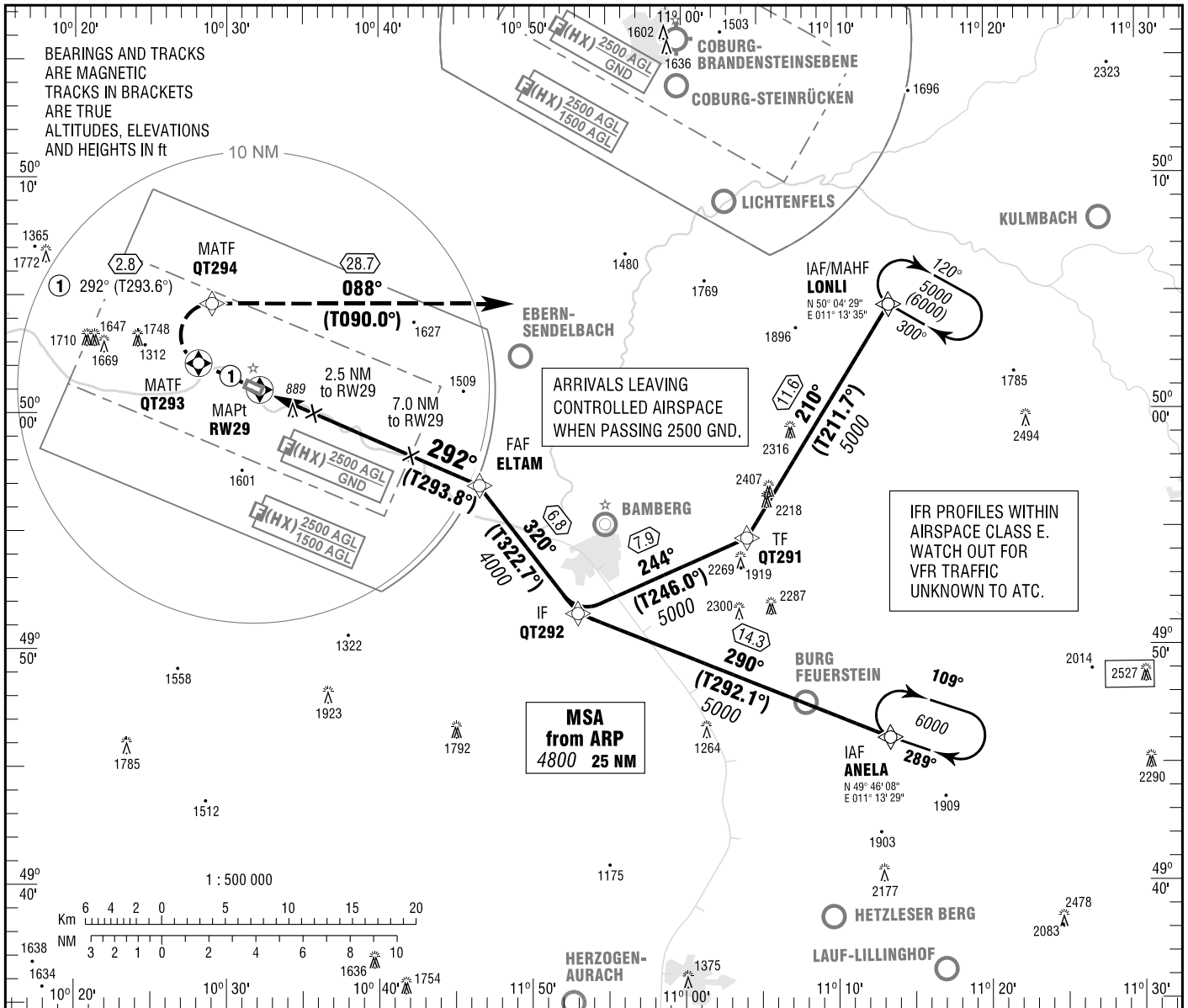


**INSTRUMENT  
APPROACH  
CHART - ICAO**

VAR 2° E  
ELEV 720  
OCH RELATED TO  
THR 29 ELEV 720

MÜNCHEN RADAR 129.525  
HASSFURT INFO 119.800

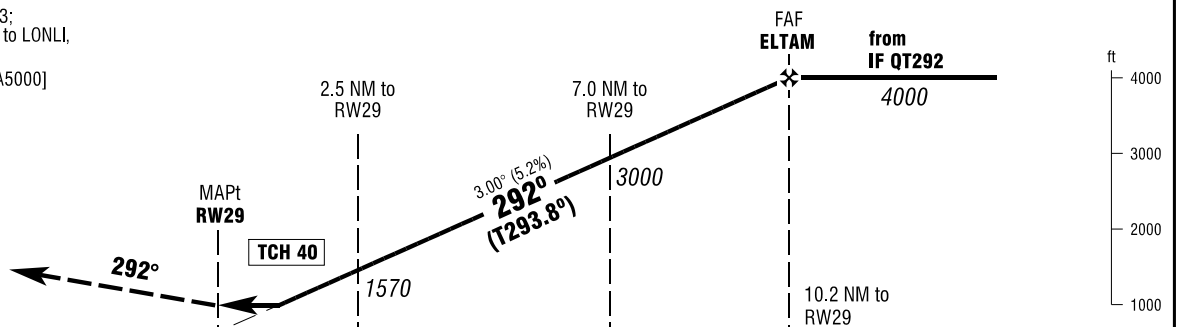
**HASSFURT-SCHWEINFURT  
RNAV (GPS)  
RWY 29**



**MISSED APPROACH PROCEDURE**

Climb on track 292° to QT293;  
RT, via QT294 on track 088° to LONLI,  
climbing to 5000.

QT293[R] - QT294 - LONLI[A5000]



PROFILE SCALE 1 : 250 000  
NM 6 5 4 3 2 1 0 1 2 3 4 5 6 7 8 9 10 11 12 13 14 NM

OCA (OCH)	A	B		
LNAV	1130 (420)	1130 (420)		

DIST THR / RW29	2	3	4	5	6	7	8	9
ALTITUDE	1410	1730	2050	2370	2690	3000	3320	3640

Timing not authorized for defining the MAPt.

GS	kt	80	100	120	140	160
ELTAM - RW29 (10.2 NM)	MIN:SEC	7:39	6:07	5:06	4:22	3:50
Rate of descent (5.2%)	ft / MIN	420	530	640	740	850

Correction: Note added.