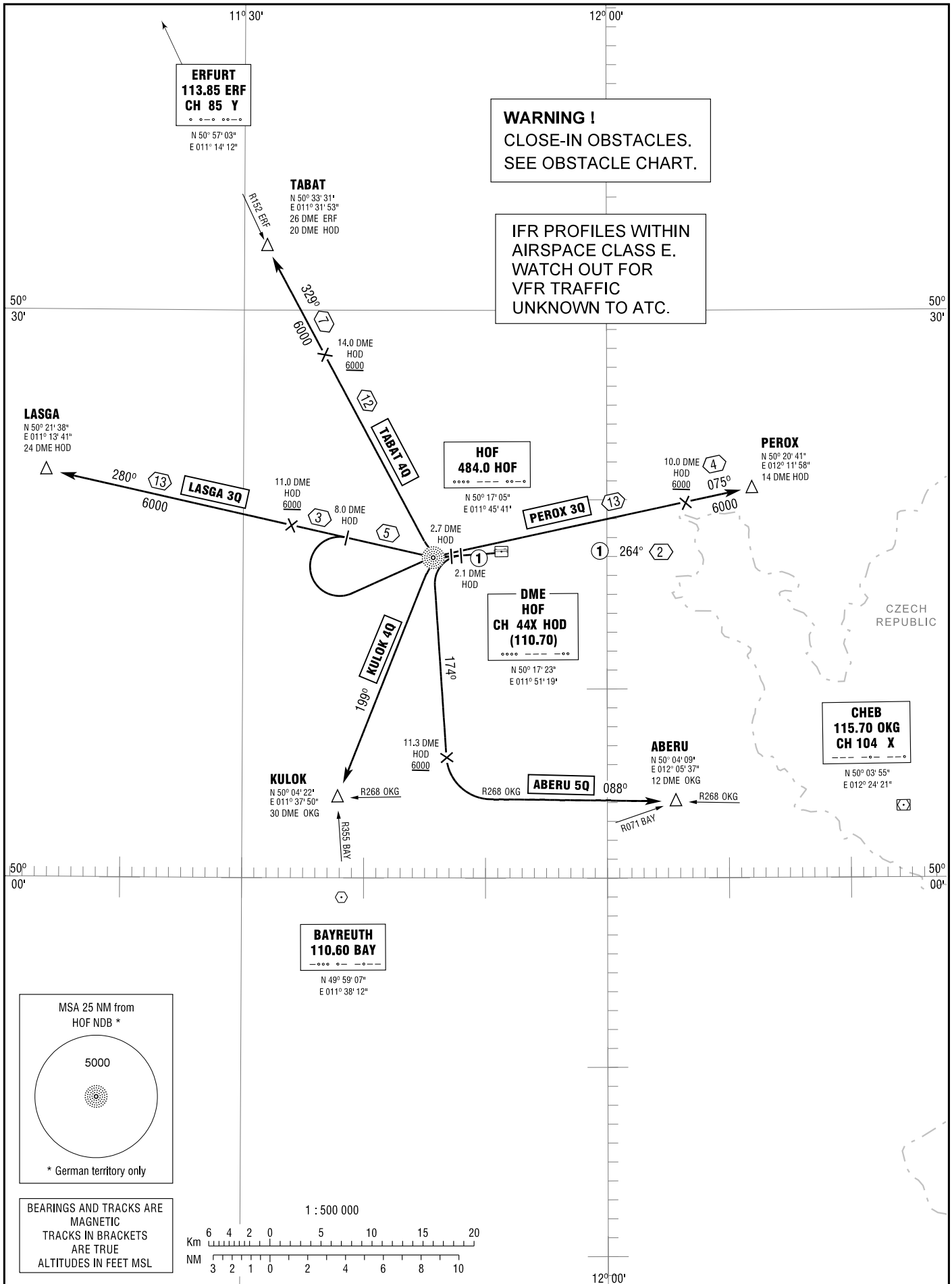


STANDARD DEPARTURE
CHART - INSTRUMENT
(SID)

TRANSITION
ALTITUDE 5000
VAR 2° E

HOF TOWER	124.350
MÜNCHEN RADAR	129.525

HOF-PLAUEN
RWY 26



Correction: Runway designation, procedure, BAY DME & LK-R 7 withdrawn, note added.