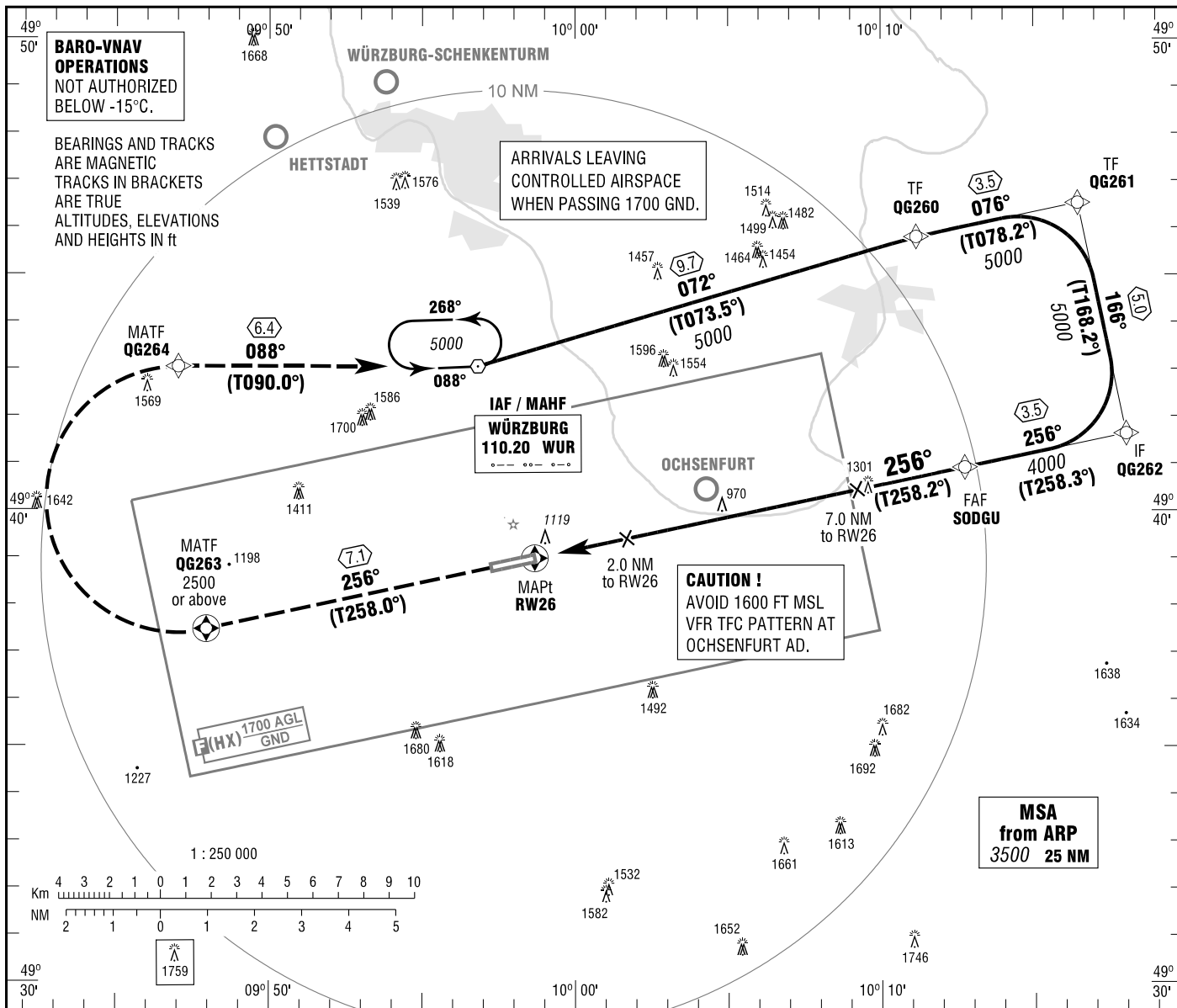


GIEBELSTADT
RNAV (GPS)
RWY 26

STETTEN RADAR	135.600
LANGEN RADAR	135.725
GIEBELSTADT INFO	122.500

ELEV 980
OCH RELATED TO THR 26 ELEV 978
VAR 2° E

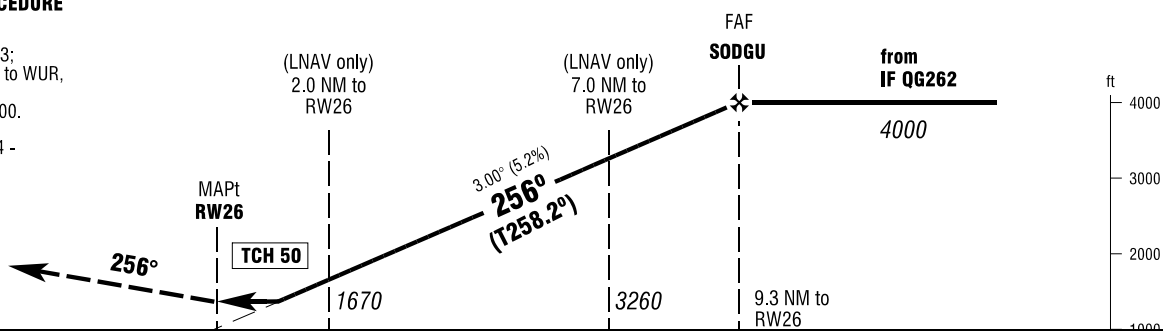
INSTRUMENT
APPROACH
CHART - ICAO



MISSED APPROACH PROCEDURE
RNAV (GPS)

Climb on track 256° to QG263;
RT, via QG264 on track 088° to WUR,
climbing to 5000.
Cross QG263 at or above 2500.

QG263[A2500+; R] - QG264 -
WUR[A5000]



OCA (OCH)	A	B	C
LNAV	1370 (390)	1370 (390)	1370 (390)
LNAV / VNAV	1280 (300)	1300 (320)	1310 (340)

DIST THR / RW26	2	3	4	5	6	7	8	9
ALTITUDE	1670	1990	2310	2620	2940	3260	3580	3900

Timing not authorized for defining the MAPt.

GS	kt	80	100	120	140	160
SODGU - RW26 (9.3 NM)	MIN:SEC	7:00	5:35	4:40	4:00	3:30
Rate of descent (5.2%)	ft / MIN	420	530	640	740	850

Correction: Note added.