

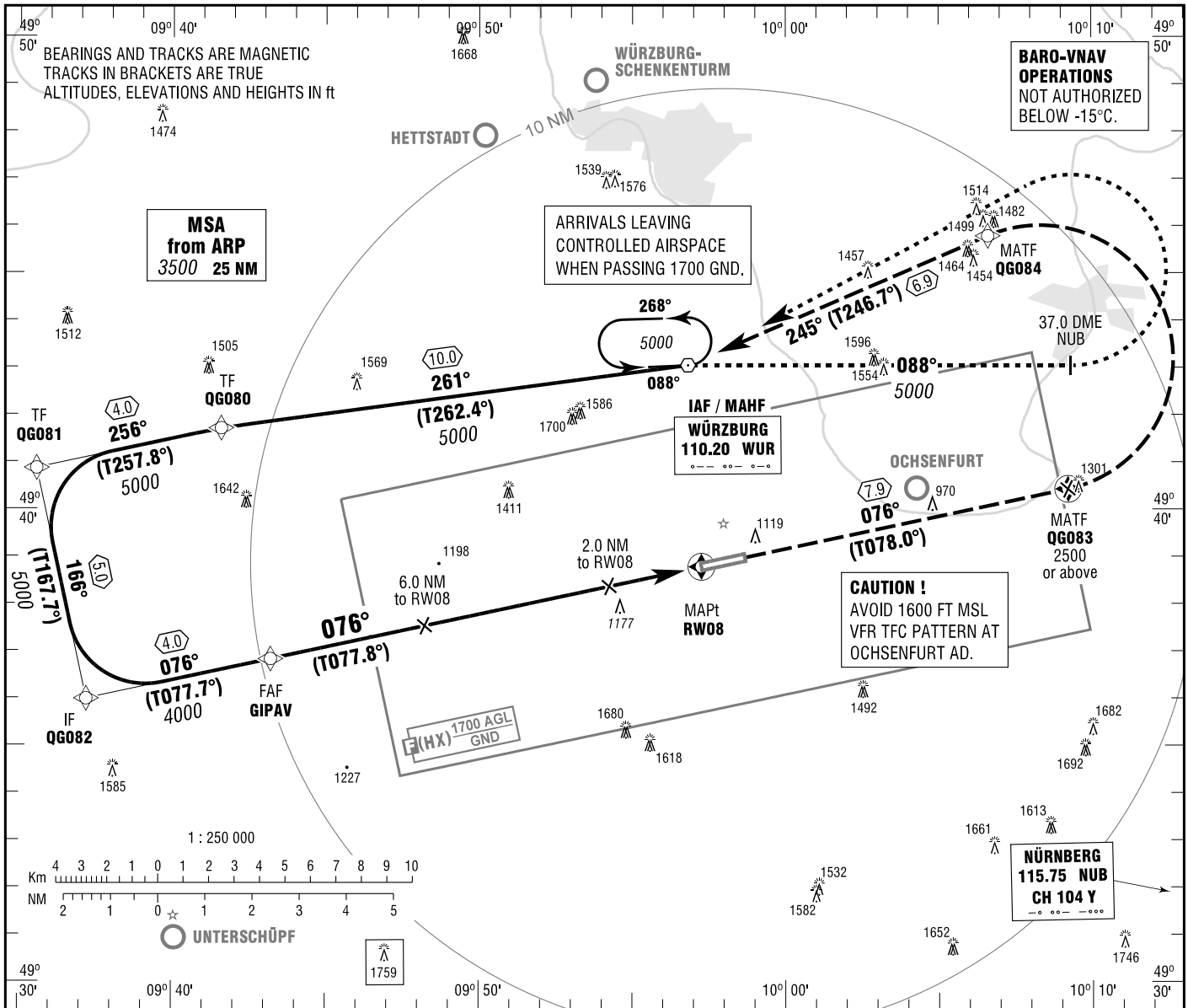
INSTRUMENT
APPROACH
CHART - ICAO

VAR 2° E

ELEV 980
OCH RELATED TO
THR 08 ELEV 977

STETTEN RADAR 135.600
LANGEN RADAR 135.725
GIEBELSTADT INFO 122.500

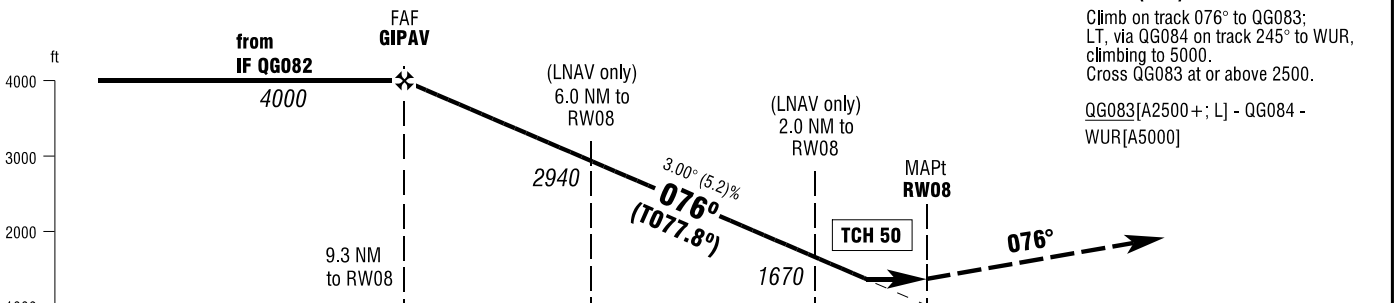
GIEBELSTADT
RNAV (GPS)
RWY 08



**MISSED APPROACH PROCEDURE
RNAV (GPS)**

Climb on track 076° to QG083;
LT, via QG084 on track 245° to WUR,
climbing to 5000.
Cross QG083 at or above 2500.

QG083[A2500+; L] - QG084 -
WUR[A5000]



OCA (OCH)	A	B	C
LNAV	1370 (390)	1370 (390)	1370 (390)
LNNAV / VNAV	1280 (300)	1280 (300)	1280 (300)

DIST THR / RW08	9	8	7	6	5	4	3	2
ALTITUDE	3900	3580	3260	2940	2620	2310	1990	1670

Timing not authorized for defining the MAPt.

GS	kt	80	100	120	140	160
GIPAV-RW08 (9.3 NM)	MIN:SEC	7:00	5:35	4:40	4:00	3:30
Rate of descent (5.2%)	ft / MIN	420	530	640	740	850

Correction: Note added.