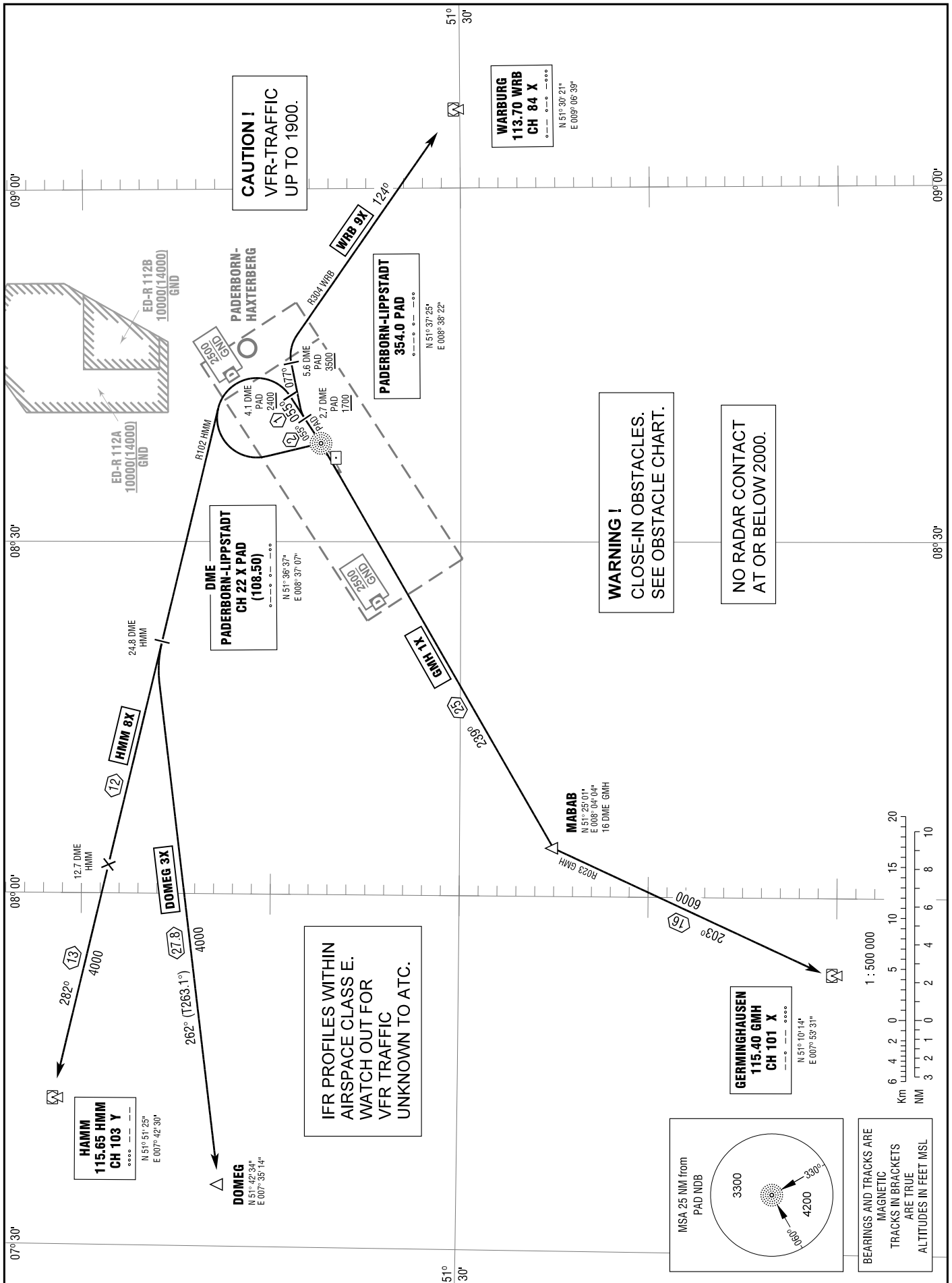


STANDARD DEPARTURE
CHART - INSTRUMENT
(SID)

TRANSITION
ALTITUDE 5000
VAR 1° E

PADERBORN ATIS	125.725
PADERBORN GROUND	121.925
PADERBORN TOWER	133.375
LANGEN RADAR	125.225

PADERBORN/LIPPSTADT
RWY 06



CAUTION !
VFR-TRAFFIC
UP TO 1900.

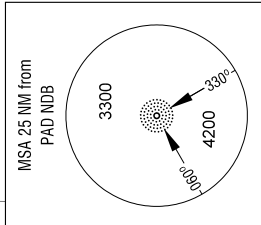
WARBURG
113.70 WRB
CH 84 X
N 51° 30' 21"
E 008° 06' 39"

DME
PADERBORN-LIPPSTADT
CH 22 X PAD
(106.50)
N 51° 36' 37"
E 008° 37' 07"

WARNING !
CLOSE-IN OBSTACLES.
SEE OBSTACLE CHART.

NO RADAR CONTACT
AT OR BELOW 2000.

**IFR PROFILES WITHIN
AIRSPACE CLASS E.
WATCH OUT FOR
VFR TRAFFIC
UNKNOWN TO ATC.**



**BEARINGS AND TRACKS ARE
MAGNETIC
TRACKS IN BRACKETS
ARE TRUE
ALTITUDES IN FEET MSL**

Correction: Note added.