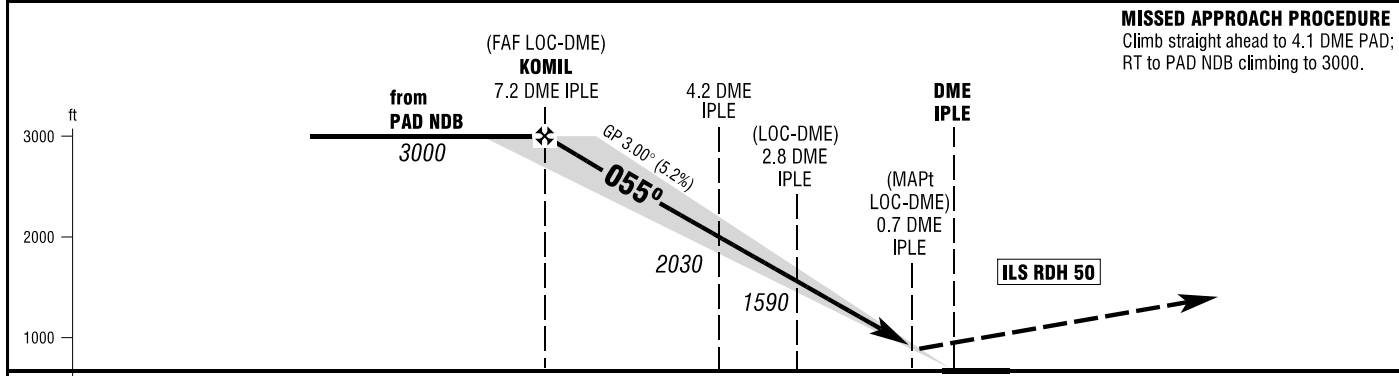
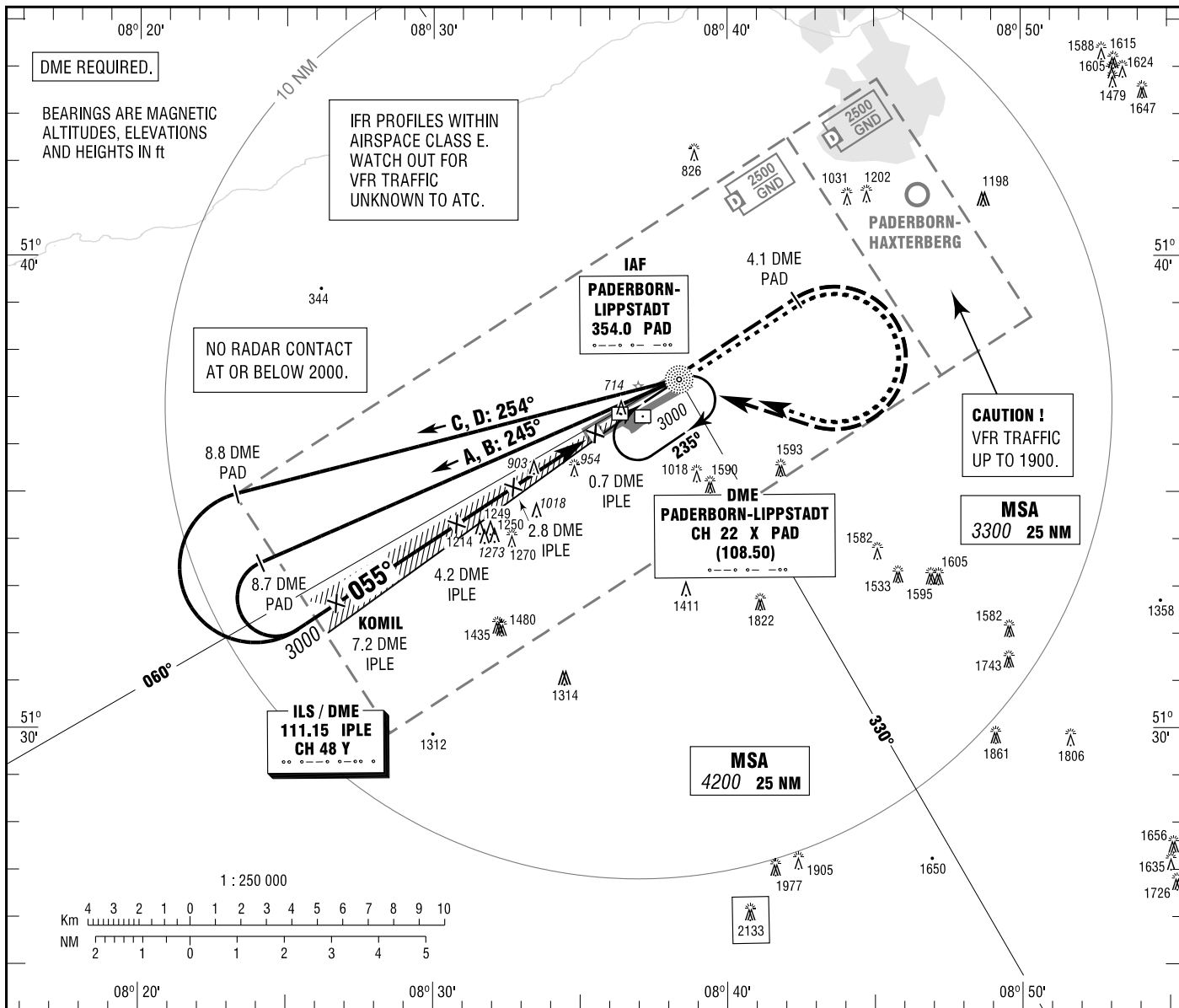


**PADERBORN/LIPPSTADT**  
ILS or LOC  
RWY 06

PADERBORN ATIS 125.725  
LANGEN RADAR 125.225  
PADERBORN TOWER 133.375  
PADERBORN GROUND 121.925

ELEV 699  
OCH RELATED TO VAR 1° E  
THR 06 ELEV 699

**INSTRUMENT**  
**APPROACH**  
**CHART - ICAO**



OCA (OCH)	A	B	C	D
ILS/DME CAT I	846 (147)	856 (157)	866 (167)	875 (176)
LOC/DME	1150 (450)	1150 (450)	1150 (450)	1150 (450)
CIRCLING OCH RELATED TO AD ELEV	1250 (560)	1320 (620)	1670 (970)	1670 (970)

DME IPLE	7	6	5	4	3	2
DIST THR	6.8	5.8	4.8	3.8	2.8	1.8
ALTITUDE	2920	2600	2280	1960	1650	1330

LOC-DME: Timing not authorized for defining the MAPt.

GS	kt	80	100	120	140	160	180
4.2 DME IPLE - THR (4.0 NM)	MIN:SEC	3:00	2:24	2:00	1:43	1:30	1:20
Rate of descent (5.2%)	ft / MIN	420	530	640	740	850	960

\* NORTH OF AERODROME ONLY.

Correction: ILS RDH, crossing altitudes.