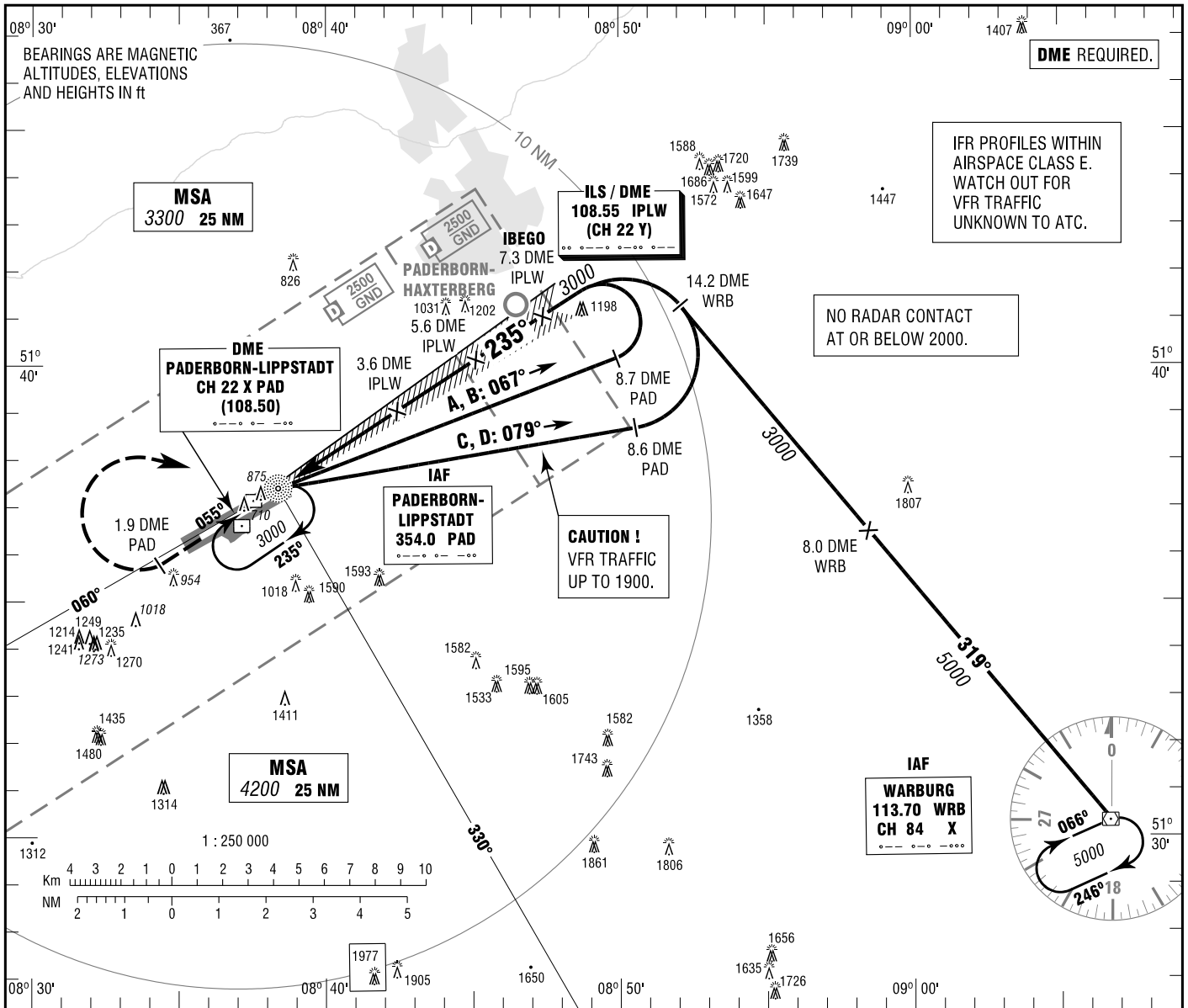


**INSTRUMENT  
APPROACH  
CHART - ICAO**

VAR 1° E  
ELEV 699  
OCH RELATED TO  
THR 24 ELEV 674

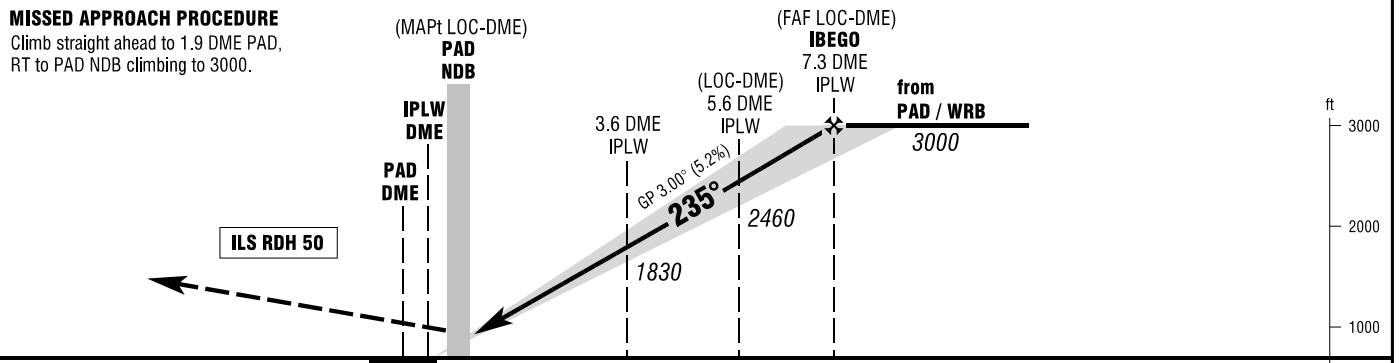
PADERBORN ATIS 125.725  
LANGEN RADAR 125.225  
PADERBORN TOWER 133.375  
PADERBORN GROUND 121.925

**PADERBORN/LIPPSTADT  
ILS or LOC  
RWY 24**



**MISSED APPROACH PROCEDURE**

Climb straight ahead to 1.9 DME PAD, RT to PAD NDB climbing to 3000.



NM 6 5 4 3 2 1 0 1 2 3 4 5 6 7 8 9 10 11 12 13 14 NM  
PROFILE SCALE 1 : 250 000

OCA (OCH)	A	B	C	D
ILS/DME CAT I	841 (167)	851 (177)	861 (187)	871 (197)
LOC-DME	1130 (450)	1130 (450)	1130 (450)	1130 (450)
CIRCLING * OCH RELATED TO AD ELEV	1250 (560)	1320 (620)	1670 (970)	1670 (970)

DME IPLW	2	3	4	5	6	7
DIST THR	1.8	2.8	3.8	4.8	5.8	6.8
ALTITUDE	1300	1620	1940	2260	2580	2890

LOC-DME: Timing not authorized for defining the MAPt.

GS	kt	80	100	120	140	160	180
3.6 DME IPLW - THR (3.4 NM)	MIN:SEC	2:33	2:02	1:42	1:27	1:17	1:08
Rate of descent (5.2%)	ft / MIN	420	530	640	740	850	960

\* NORTH OF AERODROME ONLY.

Correction: ILS RDH, crossing altitudes.