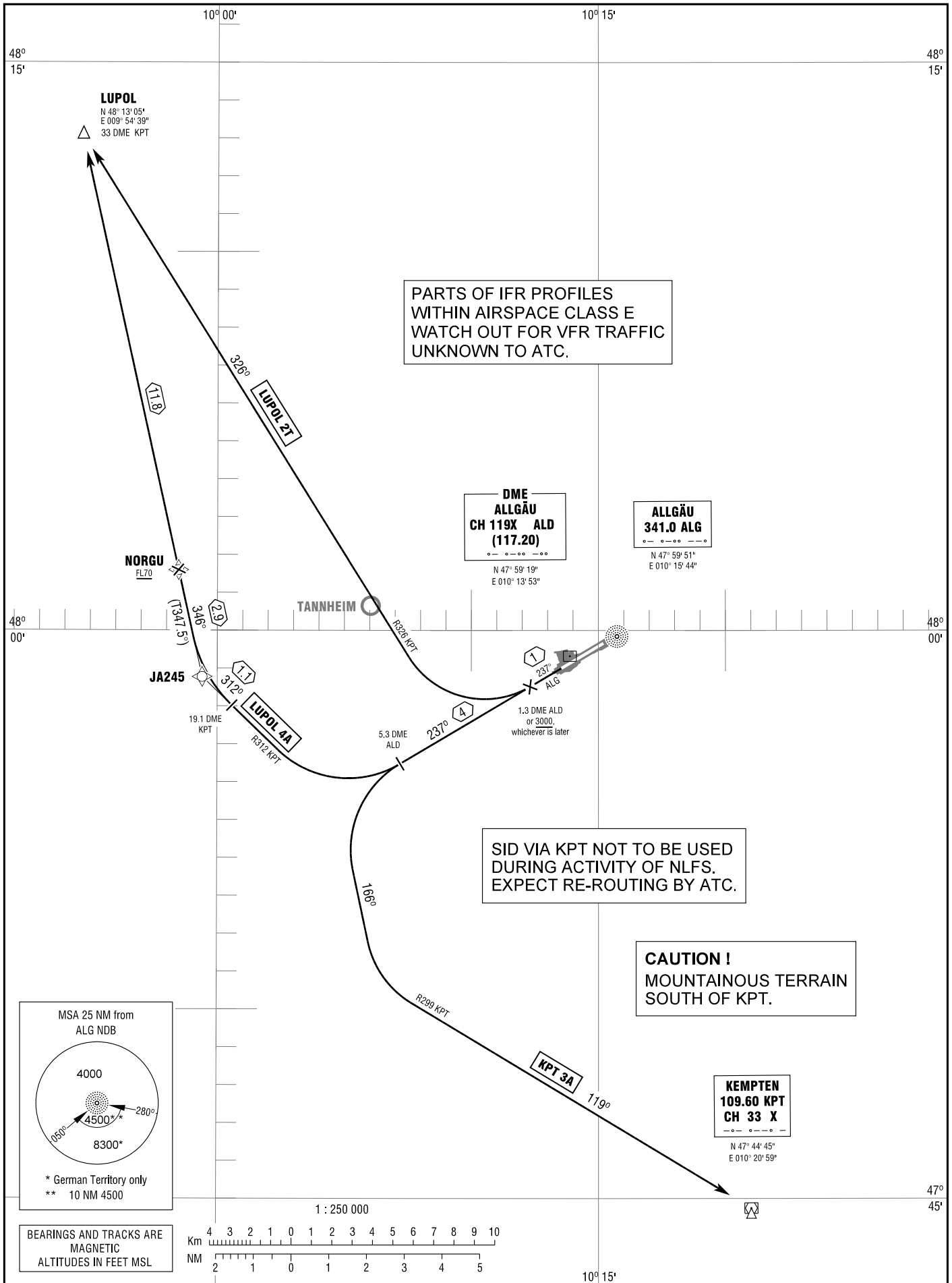


STANDARD DEPARTURE  
CHART - INSTRUMENT  
(SID)

TRANSITION  
ALTITUDE 5000  
VAR 2° E

ATIS	118.850
GROUND	121.675
TOWER	126.850
MÜNCHEN RADAR	129.450

MEMMINGEN  
RWY 24



Correction: MSA, note deleted & added.