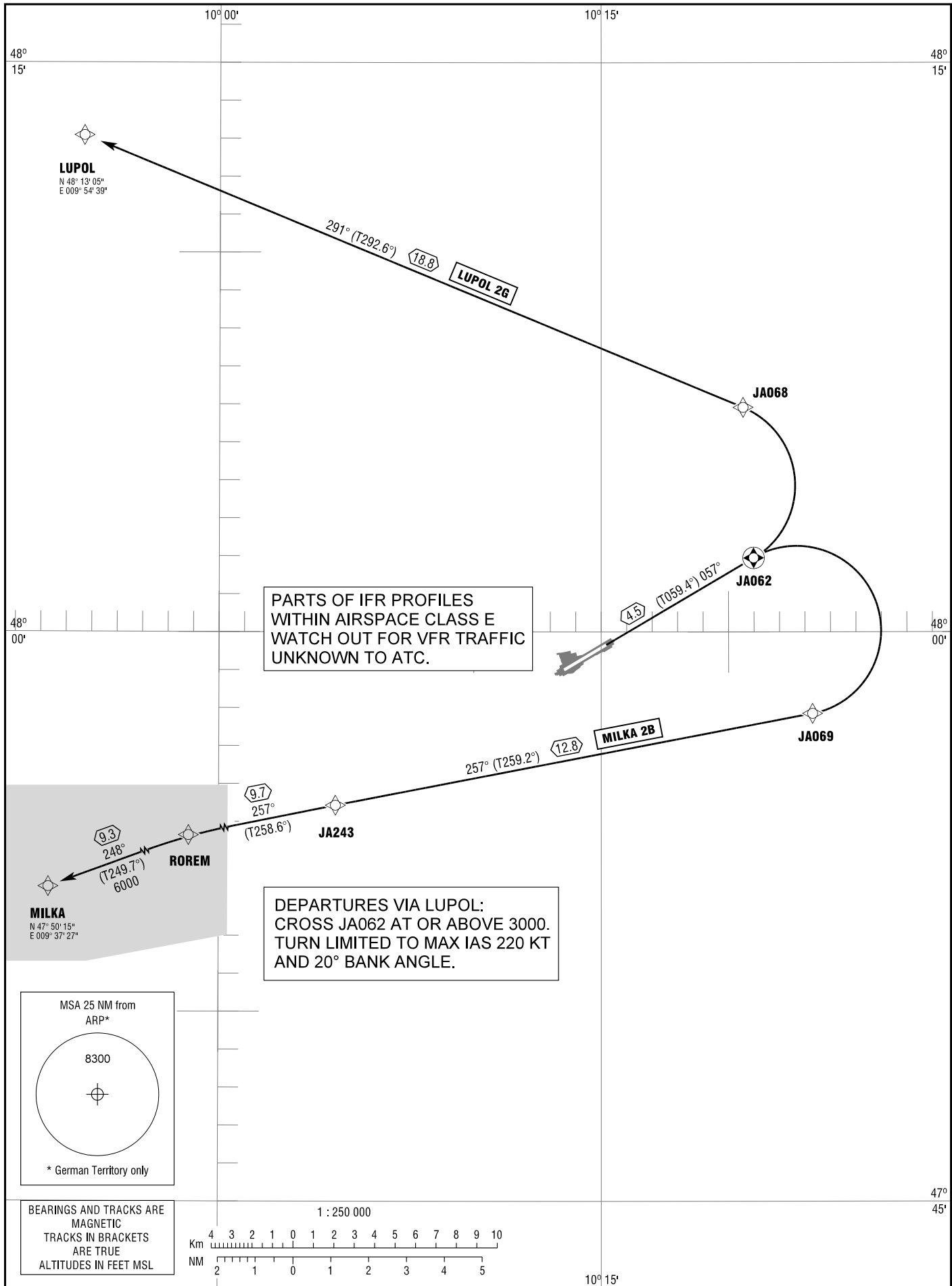


MEMMINGEN  
RWY 06

ATIS	118.850
GROUND	121.675
TOWER	126.850
MÜNCHEN RADAR	129.450

TRANSITION  
ALTITUDE 5000  
VAR 2° E

STANDARD DEPARTURE  
CHART - INSTRUMENT  
RNAV (GPS)



Correction: Note added.