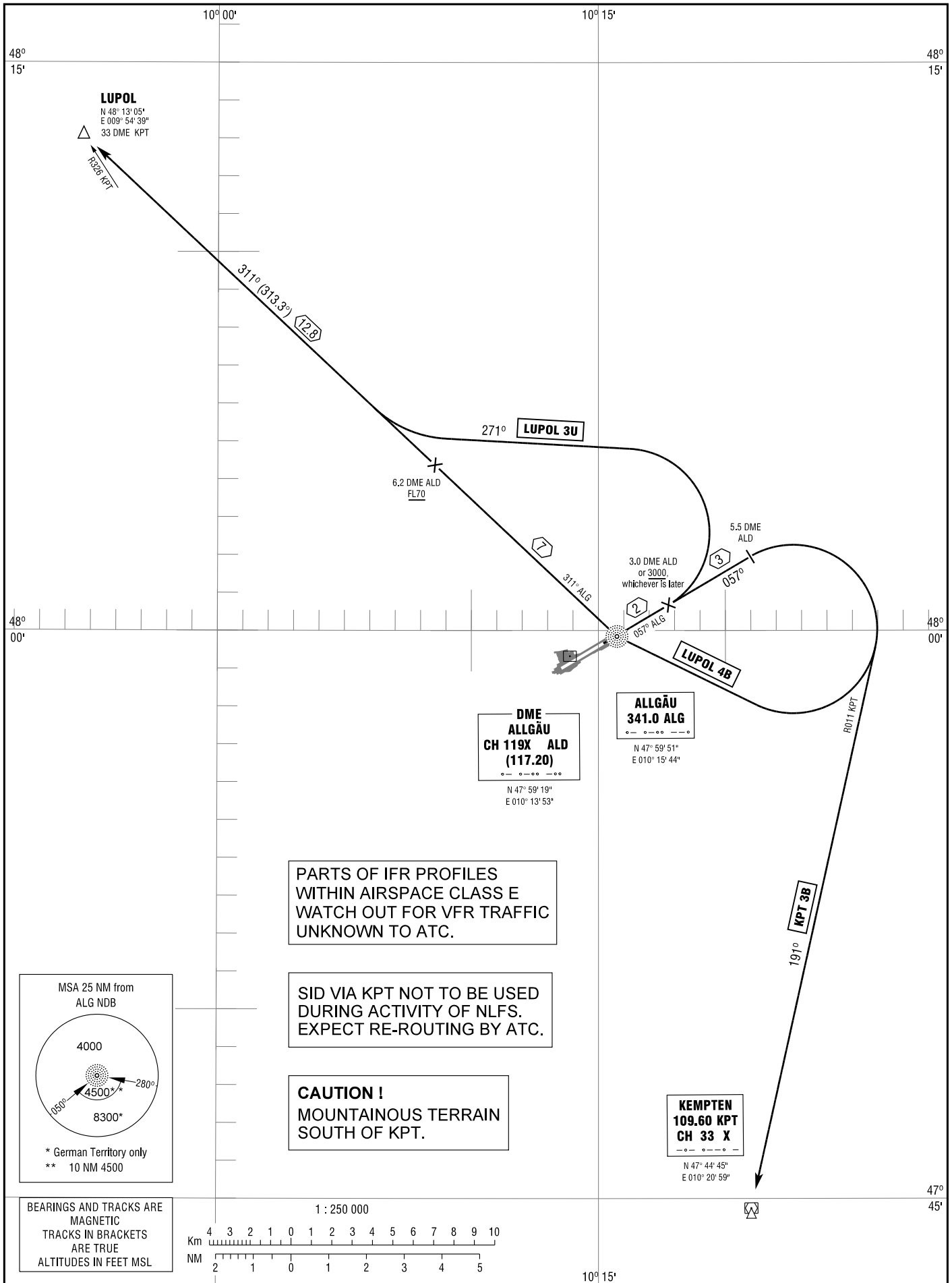


STANDARD DEPARTURE
CHART - INSTRUMENT
(SID)

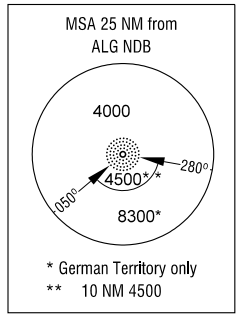
TRANSITION
ALTITUDE 5000
VAR 2° E

ATIS	118.850
GROUND	121.675
TOWER	126.850
MÜNCHEN RADAR	129.450

MEMMINGEN
RWY 06



Correction: Procedure, MSA, note added.



PARTS OF IFR PROFILES
WITHIN AIRSPACE CLASS E
WATCH OUT FOR VFR TRAFFIC
UNKNOWN TO ATC.

SID VIA KPT NOT TO BE USED
DURING ACTIVITY OF NLFS.
EXPECT RE-ROUTING BY ATC.

CAUTION !
MOUNTAINOUS TERRAIN
SOUTH OF KPT.

BEARINGS AND TRACKS ARE
MAGNETIC
TRACKS IN BRACKETS
ARE TRUE
ALTITUDES IN FEET MSL

