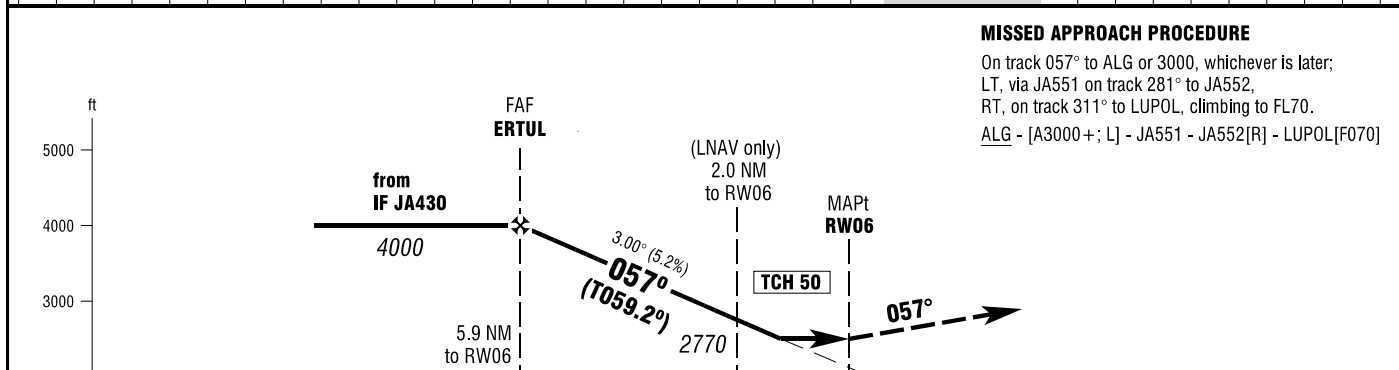
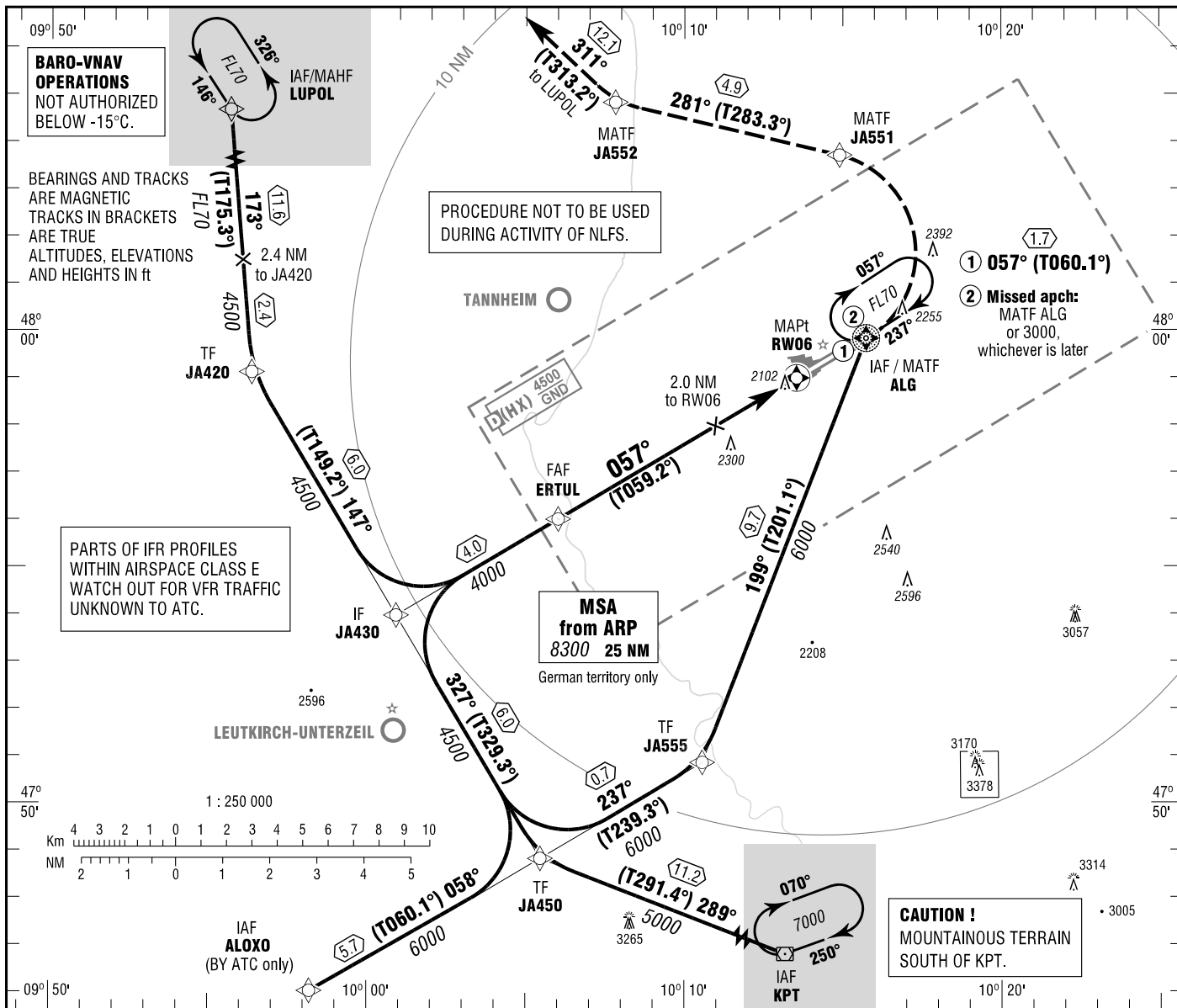


MEMMINGEN
RNAV (GPS)
RWY 06

ATIS 118.850
MÜNCHEN RADAR 129.450
TOWER 126.850
GROUND 121.675

ELEV 2079
OCH RELATED TO VAR 2° E
THR 06 ELEV 2079

INSTRUMENT
APPROACH
CHART - ICAO



MISSED APPROACH PROCEDURE

On track 057° to ALG or 3000, whichever is later;
LT, via JA551 on track 281° to LUPOL,
RT, on track 311° to LUPOL, climbing to FL70.
ALG - [A3000+; L] - JA551 - JA552[R] - LUPOL[F070]

OCA (OCH)	A	B	C	D
LNAV	2490 (410)	2490 (410)	2490 (410)	2490 (410)
LNAV / VNAV	2380 (300)	2380 (300)	2380 (300)	2380 (300)
CIRCLING * OCH RELATED TO AD ELEV	2640 (560)	2690 (610)	2940 (860)	2990 (920)

DIST THR / RW06	5	4	3	2			
ALTITUDE	3730	3410	3090	2770			

Timing not authorized for defining the MAPt.

GS	kt	80	100	120	140	160	180
ERTUL - RW06 (5.9 NM)	MIN:SEC	4:26	3:32	2:57	2:32	2:13	1:58
Rate of descent (5.2%)	ft / MIN	420	530	640	740	850	960

* SOUTHEAST OF AERODROME ONLY.

Correction: Circling CAT A OCA(H) values, depiction.