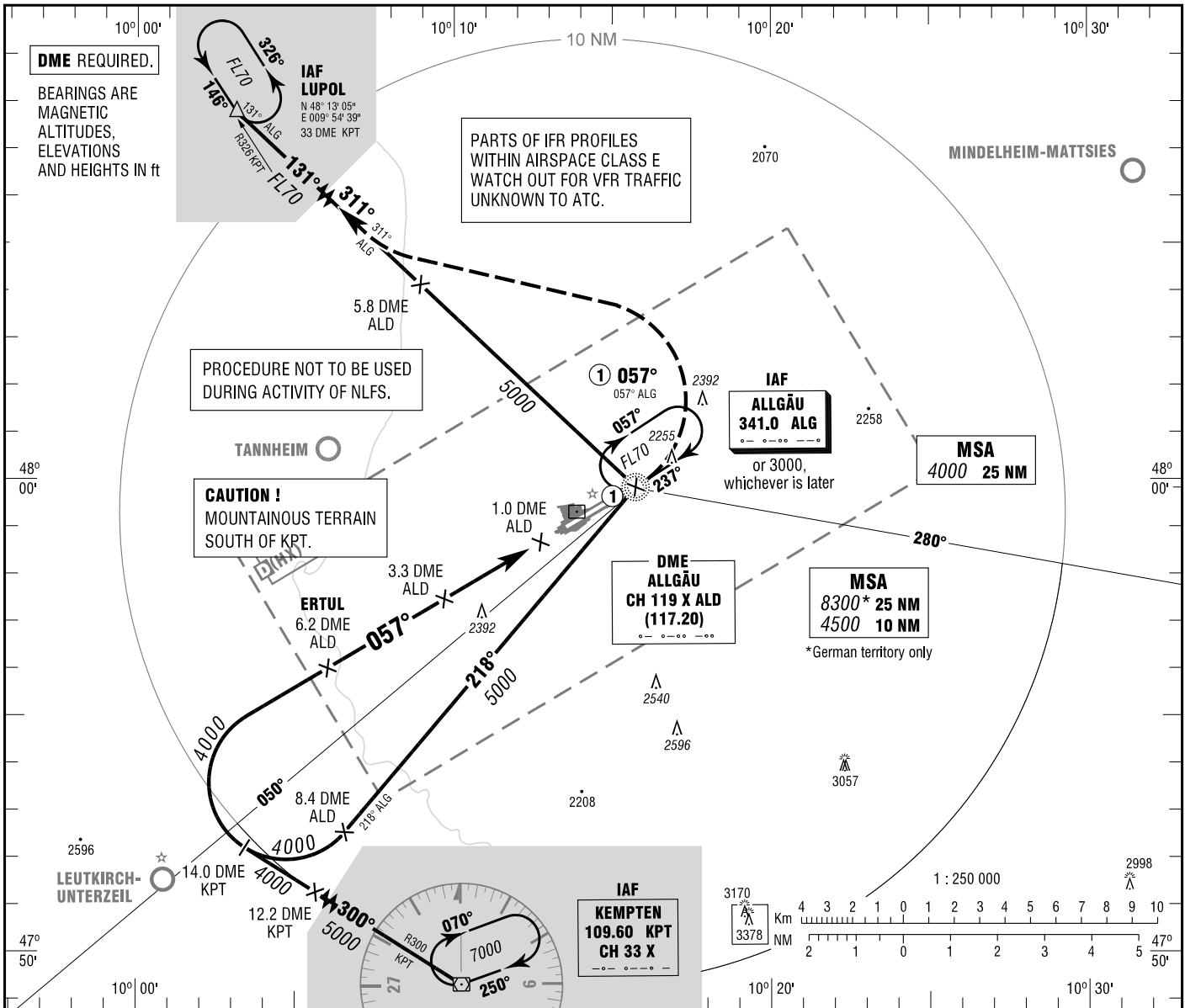


MEMMINGEN  
NDB  
RWY 06

ATIS 118.850  
MÜNCHEN RADAR 129.450  
TOWER 126.850  
GROUND 121.675

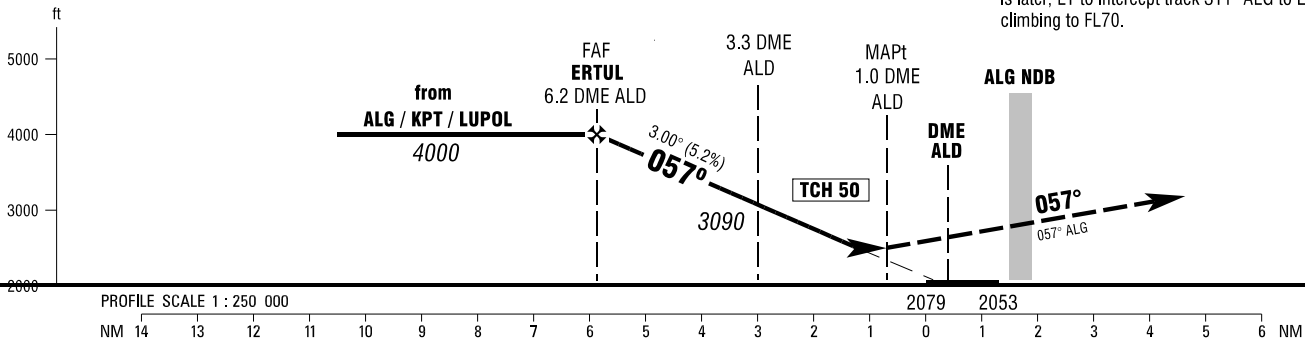
ELEV 2079  
OCH RELATED TO VAR 2° E  
THR 06 ELEV 2079

INSTRUMENT  
APPROACH  
CHART - ICAO



**MISSED APPROACH PROCEDURE**

On track 057° ALG to ALG or 3000, whichever is later, LT to intercept track 311° ALG to LUPOL, climbing to FL70.



OCA (OCH)	A	B	C	D
NDB-DME	2640 (560)	2640 (560)	2640 (560)	2640 (560)
CIRCLING * OCH RELATED TO AD ELEV	2640 (560)	2690 (610)	2940 (860)	2990 (920)

DME ALD	6	5	4	3	2		
DIST THR	5.7	4.7	3.7	2.7	1.7		
ALTITUDE	3950	3630	3310	2990	2680		

Timing not authorized for defining the MAPt.

GS	kt	80	100	120	140	160	180
3.3 DME ALD - 1.0 DME ALD (2.3 NM)	MIN:SEC	1:44	1:23	1:09	0:59	0:52	0:46
Rate of descent (5.2%)	ft / MIN	420	530	640	740	850	960

\* SOUTHEAST OF AERODROME ONLY

Correction: Circling CAT A OCA(H) values.